



Installation and technical manual

VPS-Design Wall mounting



GB



VPS-Design B 1000 – 2000 RF

VPS-Design W 1000 – 2000 RF

VPS-Design M 1000 – 2000 RF

VPS-Design B/W/M 1200 H RF

THESE INSTRUCTIONS SHOULD BE READ CAREFULLY AND RETAINED FOR FUTURE REFERENCE. BE SURE TO OBSERVE ALL LABELS AND WARNINGS ON THE APPLIANCE

Edition: 01/18

Id_Nr.911 361 911

1. For your safety

- This appliance is intended for normal household use and not for use for vehicles or on board ships or aircrafts.
- This appliance can be used by children aged from 8 years and above and persons with reduced physical, sensory or mental capabilities or lack of experience and knowledge if they have been given supervision or instruction concerning use of the appliance in a safe way and understand the hazards involved. Children shall not play with the appliance. Cleaning and user maintenance shall not be made by children without supervision.
- Children of less than 3 years should be kept away unless continuously supervised.
- Children aged from 3 years and less than 8 years shall only switch on/off the appliance provided that it has been placed or installed in its intended normal operating position and they have been given supervision or instruction concerning use of the appliance in a safe way and understand the hazards involved. Children aged from 3 years and less than 8 years shall not plug in, regulate and clean the appliance or perform user maintenance.

- **CAUTION — Some parts of this product can become very hot and cause burns. Particular attention has to be given where children and vulnerable people are present.**
- Make sure that your supply rating corresponds to what specified on the rating plate: 230V~, 50Hz.
- During function, place the heater in a safe position:
 - at least 1m far from inflammable objects or furnitures;
 - leaving not less than 1m of free space in front of the heater;
 - not located immediately below a socket-outlet.
- Do not leave animals or children touch or play with the appliance.
- Do not use the heater in rooms with explosive gas or while using inflammable solvents or varnish or glues.
- If the cordset is damaged and you have to change it, do not do the job yourselves! Take the product to an after sales authorised repair centre or to a person with similar skill and knowledge, in order to avoid any risk of danger.
- The appliance must be positioned so that the plug is always accessible.
- Do not mount the product on walls made of synthetic material.



Warning! this device has to be grounded

This device may only be operated using alternating current and the operating voltage indicated on the power rating plate

- Nominal Voltage 230V AC, 50 Hz
- Protection Class I
- Degree of Protection IP 24
- Room Thermostat 7°C till 30°C

GB

3.1 User Manuel VPS RF Model

3.1.1 Setting the Room Thermostat

Press the **receiver button** for more than 3 seconds, until the indicator light begins to flash. Subsequently press the transmitter key in the configuration mode. (see User Manual Receiver) As soon as the indicator light stops flashing the two products are assigned.

3.1.2 Setting the sender

Press the receiver button for at least 3 seconds until the indicator light starts flashing. Two modes of operation are possible.

Slow flashing: On\Off switch

Fast flashing: instigator

To switch the mode again, press the key briefly. Take the transmitter into the Configuration mode (see user manual transmitter). Check that the indicator light is no longer flashing.

Application Example

The use of a room thermostat in combination with a opening detector is ideal, because the opening detector will detect if a window is open and will automatically switch to frost protection. By pressing the receiver button for approximately 10 seconds, you can change the relay's setting. You know the setting is changed as soon as the signal light stops flashing.

3.1.3 Deleting Allocations

To delete the setting simply press the receiver key for approximately 30 seconds until you see the receiver light flash briefly. All transmitters are now deleted.

3.1.4 Receiver RF- Technical Specifications

- Power Supply 230 V, 50 Hz +/-10%
- Protection Class II
- Expenditure : 0,5 VA
- Switching capacity max.: 16 A 230 Veff Cos j =1 or max. 300 W with lighting control
- Radio Frequency 868 MHz (NormEN 300 220),
- Radio Range up to 300 m in an open field, indoors up to ca. 30m, depending on the construction of the building and the electromagnetic interference
- Maximal Number of receivers: 8
- Mode of operation: type 1.C (Micro-disconnection)
- Operating Temperature: -5°C to +50°C
- Storage Temperature: -10 °C +70°C
- Dimensions: 120 x 54 x 25 mm
- Degree of Protection : IP 44 - IK 04
- To be installed in average polluted Areas

WARNING

Do not install this device in areas that present an explosion hazard like a garage. Remove all protective coverage before turning on the device. When using the device for the first time you might detect a strong odor. This is no reason for concern; it is caused by residues of production and will disappear shortly.



The rising heat may cause stains on the ceiling, however this phenomena can be caused by any other heating device as well. Only a qualified electrician may open or remove the device from the power supply.

4. Maintenance

Before cleaning the device be sure to turn it off. To clean use a damp towel and a mild detergent.

5. Assembly instruction

This Manual is very important and has to be kept at a safe place at all times. Be sure to hand this manual to any other succeeding owner of the device.

The device is an electrical heater that was designed and intended to be mounted to walls. The device comes with a power plug that has to be plugged into an outlet.

The device is designed to be connected to 230V (nominal) alternating current (AC).

5.1 Wall Installation

When installing the device, the safety distance must be strictly adhered to, so that flammable materials can not ignite. Install the device to a wall which is heat resistant up to 90 ° C.

- Due to possible fire hazard the safety distances are observed during assembly:

Side walls of the heater to any masonry:	5 cm
Side walls of the heater to combustible materials:	10 cm
Distance radiator to the floor:	25 cm
arranged spaced upper radiator limit to about components or covers (. Eg window):	
	flammable 15 cm
	nonflammable 10 cm

To prevent inflammable materials from catching fire be sure to keep the prescribed safety distance when installing the device. Mount the device to a wall that is fireproof up to 90 ° C.

The safety distance to the floor should be 25 cm, and at least 10 cm to all other devices. Furthermore there has to be safety distance of approximately 50 cm between the ventilation grille, windowsills, roof slopes and ceilings.

If you want to install the device in your bathroom, be sure to keep it out of reach for people taking a shower or a bath.

When mounting the device to the wall, be sure to keep to the dimensions as indicated in the illustration on page 11. Drill two or three (if available) 7 mm holes and attach the corresponding plug. Then screw the 4 x 25 mm screws into the holes, leaving a distance of 1-2mm between the head of the screw and the wall.

Hang the device in the two or three fittings and tighten it down. **See also the additional mounting information at the following pages!**

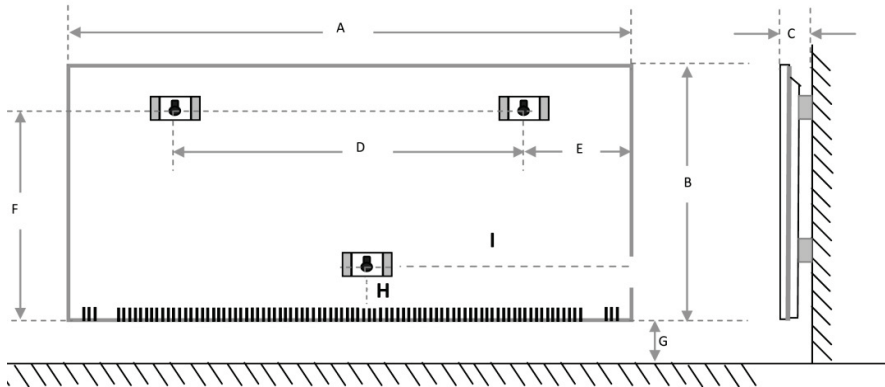


Attention: The models of VPS-Design are only used by wall mounting!

5,2. Installation of Electricity

The device was developed for an electrical voltage of 230 V(nominal) and an alternating current of (AC) 50 Hz. **The electrical installation may only be performed according to the user manual and only by a qualified Electrician.** The device was designed to be used with termination and the connection cable has to be plugged into an appropriate socket at all times. (Notice Permanent cables may not be used)The distance between the receptacle and the device hast to be at least 10cm. The connection line may not touch the device at any time

5.3 Mounting to the wall



Model	Power [Watt]	With A	High B	Deep C	[mm] D	[mm] E	[mm] F	[mm] G	[mm] H	[mm] I	Weight [kg]
VPS RF 1000	1000	750	450	85	442	140	375	250	115	375	15
VPS RF 1200	1200	750	450	85	442	140	375	250	115	375	15
VPS RF1500	1500	1050	450	85	740	140	375	250	115	525	20
VPS RF 2000	2000	1050	450	85	740	140	375	250	115	525	20
VPS H 1200	1200	450	1054	85	210	87	984	250	100	223	17

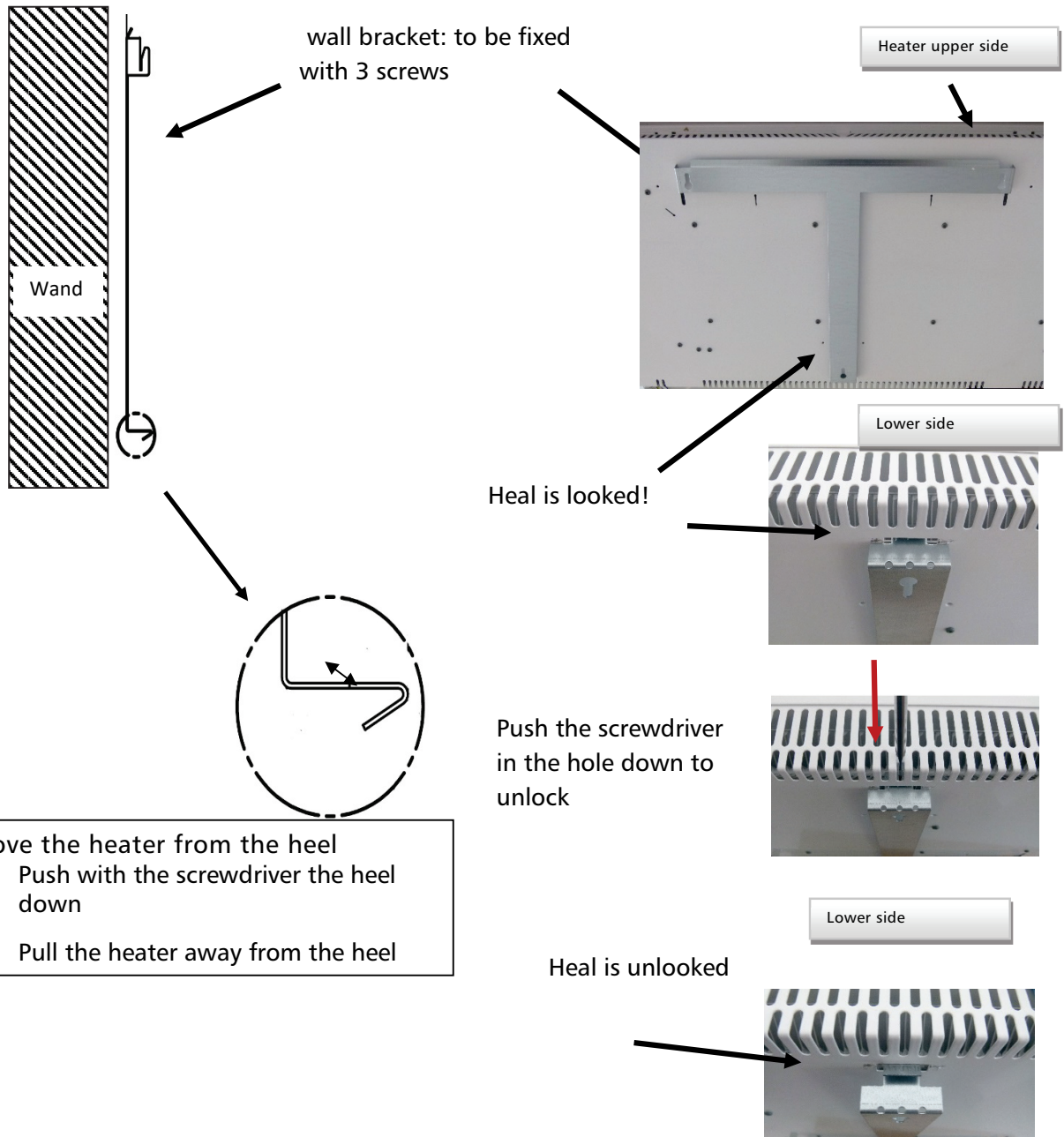
Additional mounting information

1)

Drill three holes of 7mm and fix the wall bracket. Screw in the three 4 x 25 mm screws into the wall

2)

Click the heater first at the top into the wall bracket and then at the bottom. The heater will be fixed "automatically".



6. Regulation

From 01.01.2018, the EU conformity of these devices is additionally linked to the fulfillment of the Ecodesign requirements 2015/1188.

The installation and commissioning of the devices is only permitted in conjunction with external room temperature controllers that fulfill the following functions:

- electronic room temperature control plus week timer

and has at least one of the following properties:

- room temperature control, with presence detection
- room temperature control, with open window detection
- with distance control option
- with adaptive start control
- with working time limitation
- with black bulb sensor

The following room temperature controller systems

- RF Receiver together with the TPF-Eco Thermostat (Art.Nr.: 750 000 641) and the Eco-Interface (Art.Nr.750 000 640)

from Technotherm meet the following requirements and therefore the ErP Directive:

- electronic room temperature control plus week timer

Installation of the receiver and the interfaces see separate instructions. For customer service - see last page.

Failure to comply with these requirements will result in the loss of the CE mark.

GB

Model: VPS-Design RF (additional TPF Thermostat and Eco-Interface necessary)									
Item	Symbol	Value					Value	Item	Value
Heat output							Type of heat input, for electric storage local space heaters only (select one)		
Nominal heat output	P_{nom}	1000	1200	1500	2000	Watt		manual heat charge control, with integrated thermostat	No
Minimum heat output (indicative)	P_{min}	1000	1200	1500	2000	Watt		manual heat charge control with room and/or outdoor temperature feedback	No
Maximum continuous heat output	$P_{max,c}$	1000	1200	1500	2000	Watt		electronic heat charge control with room and/or outdoor temperature feedback	No
Auxiliary electricity consumption								fan assisted heat output	No
At nominal heat output	$e_{l,max}$	1000	1200	1500	2000	Watt		Type of heat output/room temperature control (select one)	
At minimum heat output	$e_{l,min}$	<0,5	<0,5	<0,5	<0,5	Watt		single stage heat output and no room temperature control	No
In standby mode	$e_{l,SB}$	<0,5	<0,5	<0,5	<0,5	Watt		Two or more manual stages, no room temperature control	No
								with mechanic thermostat room temperature control	No
								with electronic room temperature control	No
								electronic room temperature control plus day timer	No
								electronic room temperature control plus week timer	Yes
								Other control options (multiple selections possible)	
								room temperature control, with presence detection	No
								room temperature control, with open window detection	No
								with distance control option	Yes
								with adaptive start control	No
								with working time limitation	No
								with black bulb sensor	No
Contact details:	Lucht LHZ Elektroheizung GmbH & Co. KG Reinhard-Schmidt-Str.1 D-09217 Burgstädt								

Lucht LHZ Elektroheizung GmbH & Co. KG
 Reinhard-Schmidt-Str. 1
 D 09217 Burgstädt
 Fon: +49 (0) 3724 66869 0
 Fax: +49 (0) 3724 66869 20
 E-mail: info@technotherm.de web: www.technotherm.de