

Model Name: BT3034

User Guide



January 2002

©2002 by TECOM CO., LTD. All rights reserved.

Printed in Taiwan

BLUETOOTH is a trademark owned by Bluetooth SIG., U.S.A. and licensed to TECOM Co., Ltd.
All Brand names and trademarks are the property of their respective owners

Product Features

The BT3034 Bluetooth™ USB Dongle is compliant with Bluetooth standard to assist you to enjoy the wireless data connectivity experience among different Bluetooth enabled devices such as desktop & notebook PC, printer, or PDA. The product provides the following features:

- Compliant with Bluetooth Specification V.1.1
- USB bus-powered; an external power supply is not required
- Supports device drivers for: Microsoft Windows 98SE, Microsoft Windows ME, Microsoft Windows 2000, Windows XP
- Supports 20 dBm (Class 1) Output Power; operating distance up to 100 meters
- Supports many user-friendly application profiles for LAN access, files transfer, dial-up networking, and data synchronization between devices etc.
- Supports data rates up to 723 Kbps

Product Quick Installation Guide

- Check Product Contents
 - Insert Software Installation CD to install software
 - Plug in BT3034 to your computers USB port to install driver
 - Configuring the application parameters
 - Enjoy the Bluetooth connectivity
-

- 1 Quick Installation Guide
- 1 Bluetooth USB Dongle
- 1 CD-ROM for Installation Software & Documentation
- 1 USB extension cable

System Requirement

To run the software properly, please make sure your Desktop PC or Notebook PC meets the following requirements:

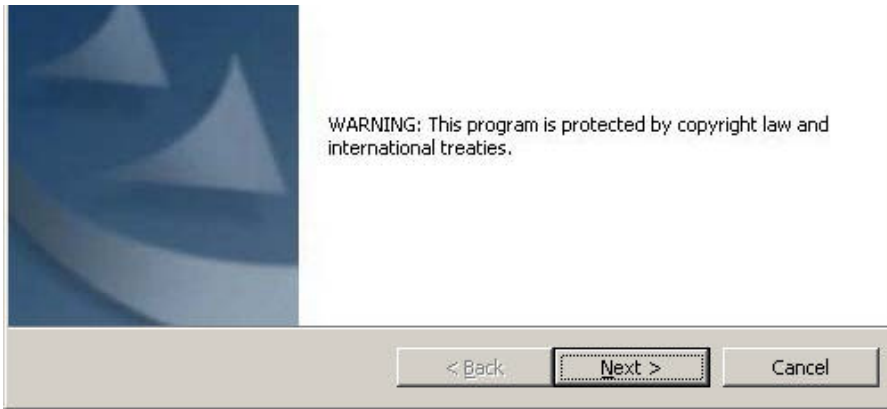
- Hardware: Pentium Class PC, CPU speed 200 MHz or above
- RAM: 128MB or above
- USB port, supports USB 1.1 standard
- Operating System: Windows 98SE, or Windows Me, or Windows 2000, or Windows XP.

Software Setup & Driver Installation

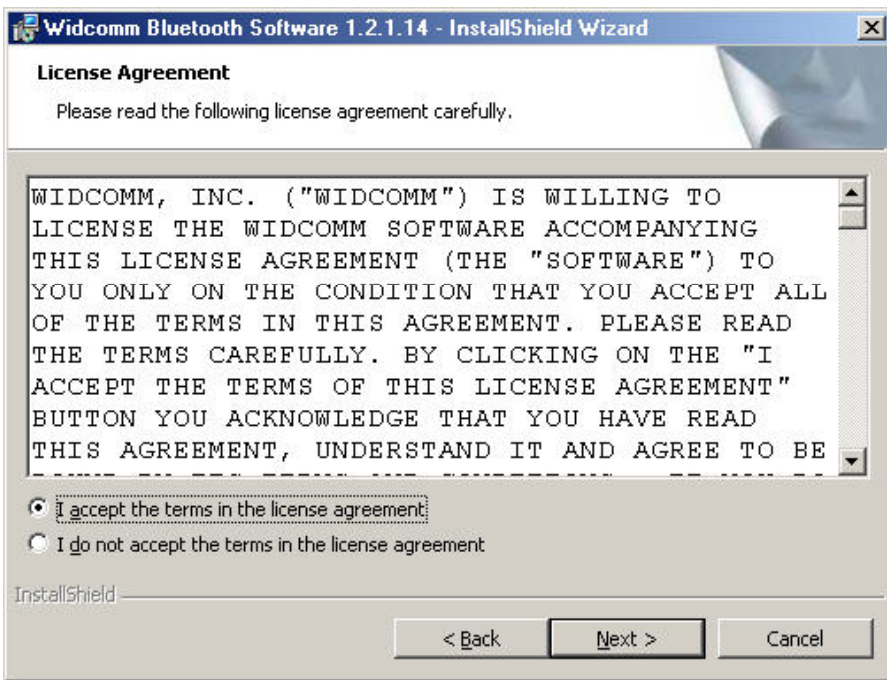
To install the Bluetooth Software for Windows, follow the instructions described below:

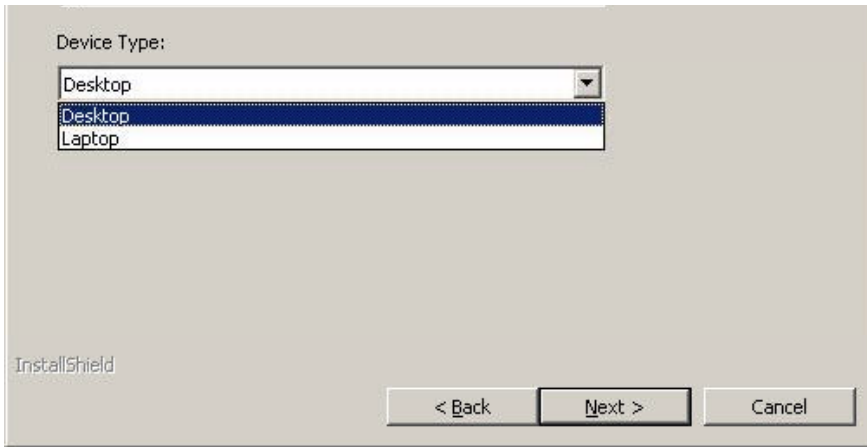
Note: When installing under Windows XP, the installation process might be a slightly different in from installing under Windows 98SE, ME, and 2000.

1. Before software installation, do not insert Bluetooth USB Dongle into the USB port.
2. **Insert** the Software Installation CD-Rom into the CD-Rom drive.
3. A Software Installation Wizard window appears, click on **Next** to begin the process.

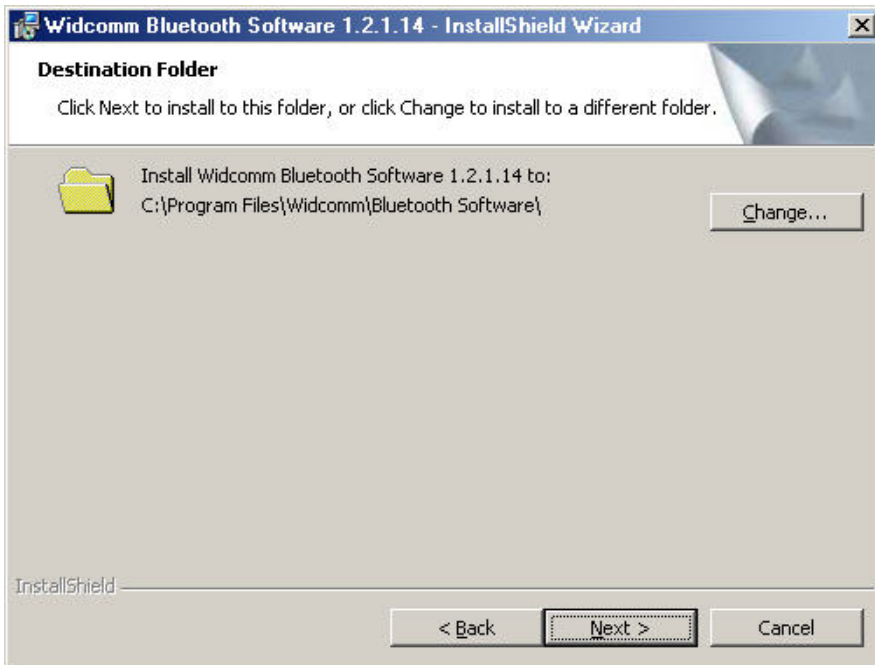


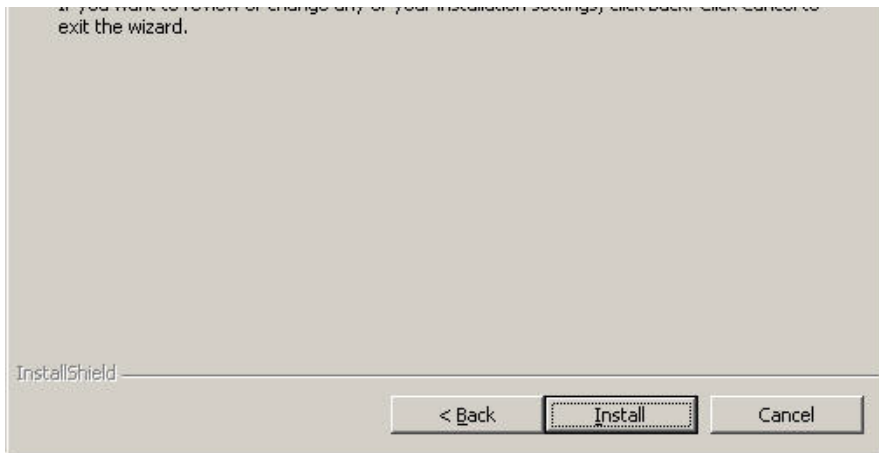
4. Choose "*I accept the terms in the license agreement*" to accept the license agreement; click on **Next**.



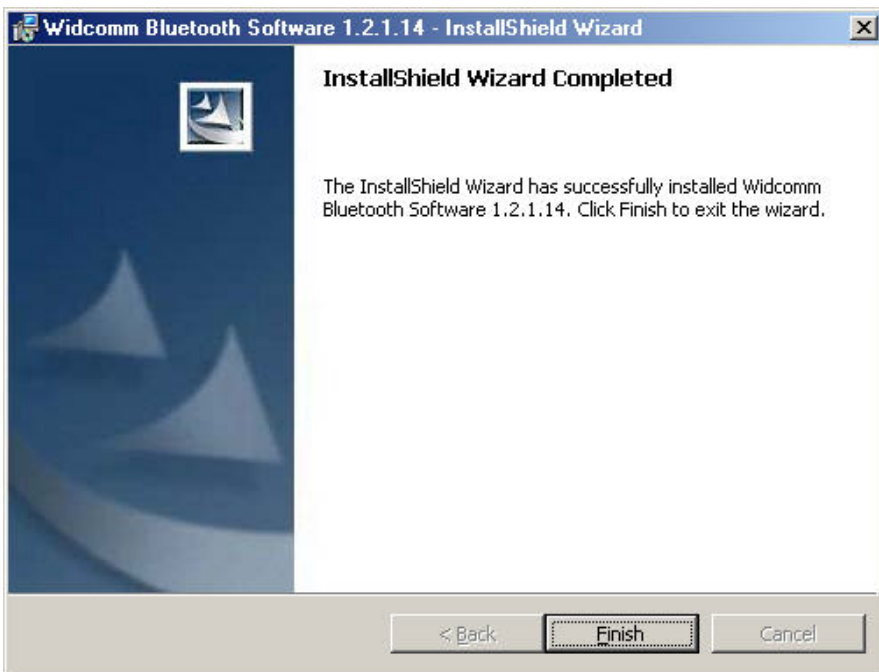


6. Specify the location of the driver & software to be installed; click on **Next**.





8. Confirm the completion of installation; click **Finish** and then start the system.



This device complies with part 15 of the FCC Rules. Operation is subject to the following two conditions:

1. This device may not cause harmful interference.
2. This device must accept any interference received, including interference that may cause undesired operation.

IMPORTANT NOTE:

1. TO COMPLY WITH THE FCC RF EXPOSURE COMPLIANCE REQUIREMENTS, A SEPARATION DISTANCE OF AT LEAST 20CM MUST BE MAINTAINED BETWEEN THE ANTENNA OF THIS DEVICE AND ALL PERSONS. NO CHANGE TO THE ANTENNA OR THE DEVICE IS PERMITTED. ANY CHANGE TO THE ANTENNA OR THE DEVICE COULD RESULT IN THE DEVICE EXCEEDING THE RF EXPOSURE REQUIREMENTS AND VOID USER'S AUTHORITY TO OPERATE THIS DEVICE.
2. THE CHANGES OR MODIFICATIONS NOT EXPRESSLY APPROVED BY THE PARTY RESPONSIBLE FOR COMPLIANCE COULD VOID THE USER'S AUTHORITY TO OPERATE THE EQUIPMENT.

Note:

This equipment has been tested and found to comply with the limits for a Class B digital device, pursuant to part 15 of the FCC Rules. These limits are designed to provide reasonable protection against harmful interference in a residential installation. This equipment generates, uses and can radiate radio frequency energy and, if not installed and used in accordance with the instructions, may cause harmful interference to radio communications. However, there is no guarantee that interference will not occur in a particular installation. If this equipment does not cause harmful interference to radio or television reception, which can be determined by turning the equipment off and on, the user is encouraged to try to correct the interference by one or more of the following measures: (1) Reorient or relocate the receiving antenna, (2) Increase the separation between the equipment and receiver, (3) Connect the equipment into an outlet on a circuit different from that to which the receiver is connected, (4) Consult the dealer or an experienced radio/TV technician for help.

Department of Communications-Canada

Canadian Compliance Statement

This Class B Digital apparatus meets all the requirements of the Canadian Interference Causing Equipment Regulations. Cet appareil numérique de la classe B respect les exigences du Règlement sur le matériel brouilleur du Canada.

This device complies with Class B Limits of Industry of Canada. Operation is subject to the following two conditions: 1) this device may not cause harmful interference, and 2) this device must accept any interference received, including interference that may cause undesired operation.

This device is certified to the requirements of RSS-139-1 and RSS-210 for 2.4 GHz spread spectrum devices. The use of this device in a system operating either partially or completely outdoors may require the user to obtain a license for the system according to the Canadian regulations. For further information, contact local Industry Canada office.

For the following equipment:
Product Name: Bluetooth USB Dongle
Model Name: BT3034

Is herewith confirmed to comply with the requirements set out in the Council Directive on the Approximation of the Laws of the Member States relating to 1999/5/EC R&TTE Directive. For the evaluation regarding the Directives, the following standards were applied: ETSI 300

FROM: _____

PLEASE

STAMP

TO: TECOM Co., LTD
IMSD
23, R&D Road 2, Science-Based Indus
Hsin-Chu 300
Taiwan

of purchase, completed and returned the Registration Card which accompanied the products when shipped, (2) return the failed product to TECOM designated repair facility with shipping charge prepaid, and (3) provide TECOM with proof of the original date of purchase. Repaired or replacement products will be returned to you with shipping charges prepaid.

Replacement products may be refurbished or contain refurbished materials. If TECOM by its sole determination, is unable to repair or replace the defective product, it will refund the depreciated purchase price of the product.

This warranty does not apply if, in the judgment of TECOM, the product fails due to damage from shipment, handling, storage, accident, abuse or misuse, or if it has been used or maintained in a manner not conforming to product manual instructions, has been modified in any way, or has had any serial number removed or defected. Repair by anyone other than TECOM or an approved agent will void this warranty. The maximum liability of TECOM under this warranty is limited to the purchase price of the product covered by the warranty.

Prior to returning any defective product, the end customer or the reseller from whom the end customer original purchased the product must obtain a Return Materials Authorization (RMA) number from TECOM. All defective products should be returned to TECOM with shipping charges prepaid.

Except as specifically provided in this statement or as required by law, the warranties and remedies stated above are exclusive and in lieu of all others, oral or written, express or implied. Any and all other warranties, including implied warranties of merchantability, fitness for a particular purpose and non-infringement of third party rights are expressly excluded. TECOM shall not under any circumstances be liable to any person for any special, incidental, indirect or consequential damages, including without or revenues or costs of replacement goods, even if TECOM is informed in advance of the possibility of such damages.

Name: _____
Title: _____
Company Name: _____
Address (1): _____
Address (2): _____
Telephone: _____
E-mail : _____
Purchase Date: _____

Where did you purchased the product?

- Mail order**
- Reseller/VAR**
- Retail Store**
- Internet**

Reseller Name: _____
Reseller Address _____
Telephone: _____
Fax: _____

What PC will this TECOM product be used?

- Desktop PC**
- Notebook PC**

Where will the product primarily be used?

- Home**
- Office**
- Personal Use**

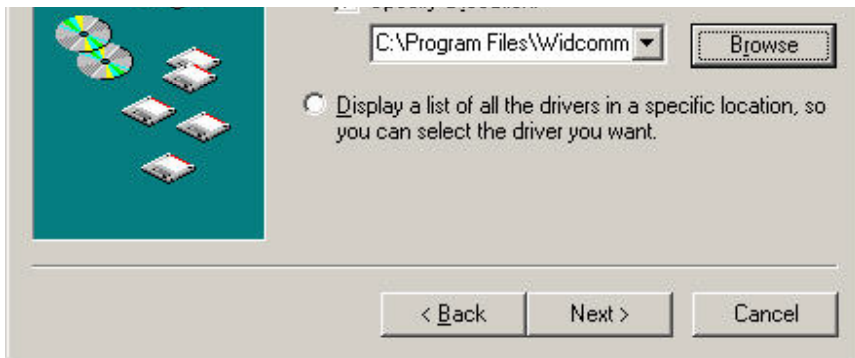
**** PLEASE ATTACH A PHOTOCOPY OF RECIPET OF ORIGINAL PURCHASE! ****

Windows is installing the software for your new hardware.

10. Choose “*Specify the location of the driver (advanced)*”; then click on **Next**.

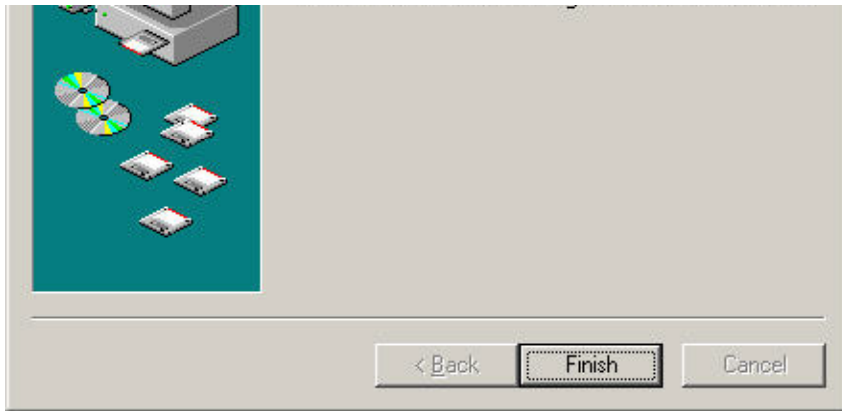


11. Select the location of device driver, please specify “C:\Program Files \Widcomm\Bluetooth Software\bin”, click on **Next**.



12. Confirm the device driver found; click on **Next**.



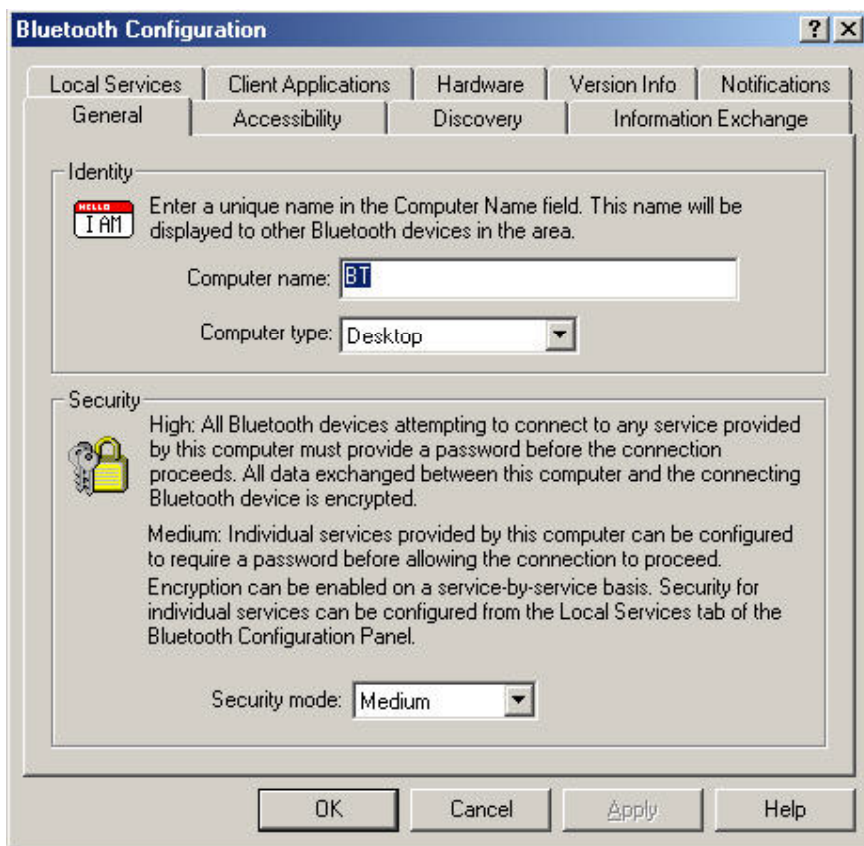


14. A “My Bluetooth Places” icon appears on the desktop.

Note: **More detailed explanations and the operation of each Bluetooth services can be found in User’s Manual in the CD-ROM.**



-
2. Click on “Configuration”, the “General” Section of Bluetooth Configuration allows you to customize the device’s user name, type, and security type.
3. The “Accessibility” Section allows you to specify which individual devices are allow to access to the user’s device.



More detailed explanations and the operation of each Bluetooth services can be found in User’s Manual in the CD-ROM.

To use the “My Bluetooth Places” program, follow the instructions described below:

1. Click “ **My Bluetooth Places**” on PC desktop, the “My Bluetooth Places” window appears, three icons, “**My Device**”, “**Entire Bluetooth Neighborhood**” & “**Add Bluetooth Connection**” appears inside the window.
2. Click **My Device** from the “Bluetooth Neighborhood” window to see which application services is available to the other devices. The icon with “**X**” or without “**X**” indicates the Bluetooth service availability of this device.
3. Click on **Entire Bluetooth Neighborhood** from the “My Bluetooth Places” window to search for available devices. Once Bluetooth devices are detected, icons with device names will be displayed on the screen; click on each icon to see what services are available to you. Click on each available service to begin with the service.
4. Click on any available device, for example, a device name “BT98” from the “My Bluetooth Places” window to see which services are available to you. Double click on each icon to begin with different services

Overseas Sales Offices

Taipei, Taiwan

China

Japan

North America

Customer and Technical Supporting Centers

North America

Europe & Asia

No.19-8, 6F San-Chung Road, Nankang District, Taipei, Taiwan
Tel: +886-2-2655-1000
Fax: +886-2-2655-1349

E#202 NO.20 Guandongian St. Chaoyang, District, Beijing, China
Post Code:100020
Tel: +86 10 65032280~1
Fax: +86 10 6503 2258;
E-mail: tecombj@public.bta.net.cn

4F, Marushin Bldg. 1-6-2 Hamamatsucho, Minato-ku, Tokyo, Japan 105-0013
Tel: +81 33435 7817
Fax: +81 33578 8381

TECOM (USA) Group, Inc.
Add: 3 Corporate Park, Suite 168, Irvine, Ca. 92606 USA
Tel: 1-949-474-1535; Fax: 1-949-474-1539
E-mail:sales@tecom.com.tw

21902 64th Ave. West #1, Mountlake, Terrace, WA 98043.
Tel: (206) 229-9979
E-mail : ytwang@tecom.com.tw

23 R&D Road 2, Science-Based Industrial Park, Hsin-Chu, Taiwan R.O.C.
Tel: +886-3-5775141
Fax: +886-3-5776855
E-mail:sales@tecom.com.tw