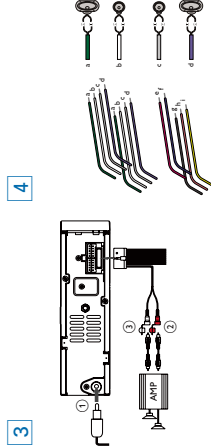
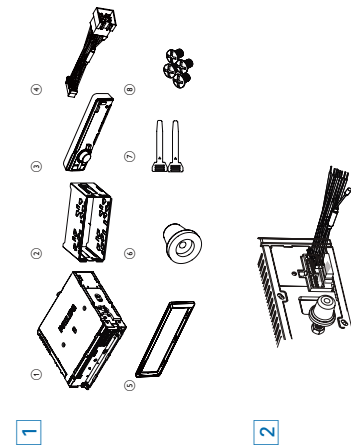
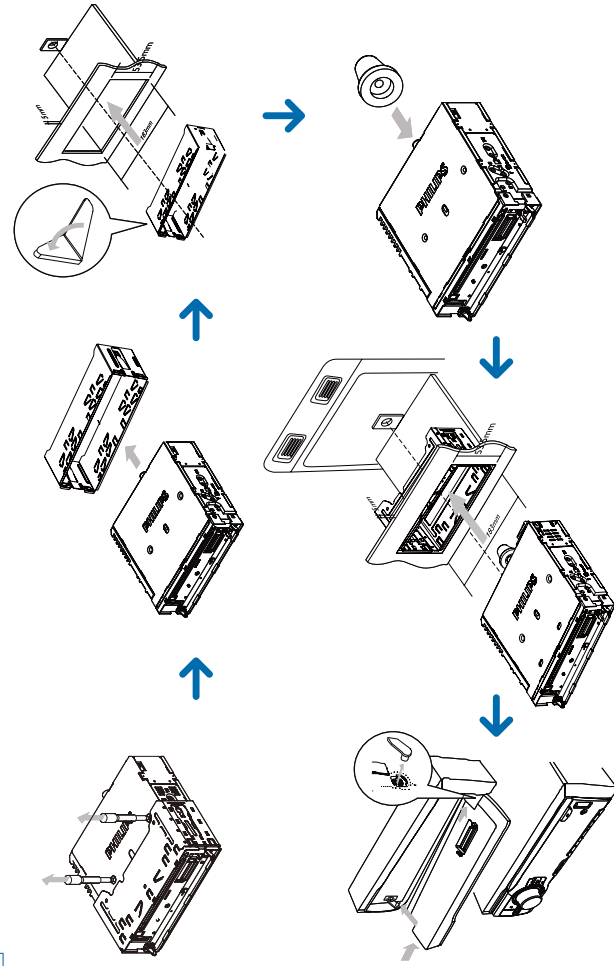




EN Quick Start Guide



5



Overview of parts 1

- Check and identify the contents of your package:
- 1 In-car audio system
 - 2 Stereo
 - 3 Front panel
 - 4 Trim plate
 - 5 Mounting sleeve
 - 6 Disassembly tool
 - 7 Screws (4 pieces)
 - 8 ISO connector

Connect wires

- Caution**
- Ensure that all loose leads are insulated with electrical tape.

For cars with ISO connector 2

- 1 Pull out the ISO connector from the dashboard and connect them to the bigger end of the supplied standard connector.
- 2 Connect the other end of the supplied standard connector to the unit.
- 3 Connect the antenna and amplifier as illustrated. If applicable, you can connect the car audio to the amplifier through RCA-TO-RCA cables (not supplied).

Connector	Connect to
1 ANTENNA	Antenna
2 REAR LINE OUT R	Rear right speaker
3 REAR LINE OUT L	Rear left speaker

For cars without ISO connectors 3

- Caution**
- Be sure to connect the black ground (earth) lead first.
- 1 Connect the antenna and amplifier as illustrated, if applicable.
 - 2 Cut off the bigger end of the supplied standard connector.
 - 3 Check the cars wiring carefully and connect them to the supplied standard connector.
 - 4 Connect the supplied standard connector to the unit.

1 Green/black strip	Left speaker (Rear)
2 White/black strip	Left speaker (Front)
3 Gray/black strip	Right speaker (Front)
4 Purple/black strip	Right speaker (Rear)

e RED Ignition key +12V DC when ON/ACC

- f BLUE Motor/electric antenna relay control lead/
Amplifier relay control lead
- g BLACK Ground
- h Orange Illumination switch
- i YELLOW To the +12V car battery which is energized at all times

Note

- Check wire connection before you mount.
- If preset radio stations are lost when the ignition key is turned OFF and then back ON, reconnect the red leads crosswise to the yellow ones.

Attach the front panel 5

- 1 Attach the trim plate.
- 2 Insert the trim plate of the panel in the chassis until it is correctly engaged.
- 3 Press the left side of the panel and point the left hole at the left pillar.
- 4 Release the panel to engage the left side.

Mount in the dashboard 5

- 1 If the car does not have an on-board drive or navigation computer, disconnect the negative terminal of the car battery.
 - If you disconnect the car battery in a car that has an on-board drive or navigation computer, the computer may lose its memory.
 - If the car battery is not disconnected, to avoid short-circuit, ensure that bare wires do not touch each other.

Remove the two screws on the top of the unit.

- 3 Remove the mounting sleeve with the supplied disassembly tool.
- 4 Ensure that car dashboard opening is within these measurements:
- 5 Install the sleeve into the dashboard and bend the tabs outward to fix the sleeve.
- 6 Place the rubber cushion over the end of the slot.
- 7 Slide the unit into the dashboard until you hear a click sound.
- 8 Reconnect the negative terminal of the car battery.

Turn on

- 1 Press 0 to turn on the unit.
- Turn off the unit, press 0 for 3 seconds.

Set clock

- 1 Press MENU/DISP for 3 seconds.
- 2 Press ▲ or ▼ repeatedly until the currently time is displayed.
- 3 Turn 0 clockwise to set hour.
- 4 Press 0 to confirm.
- 5 Turn 0 anti-clockwise to set minute.
- 6 Press 0 to confirm.

View clock

- 1 Press MENU/DISP repeatedly until the clock is displayed.

Listen to radio

- 1 Press SOURCE repeatedly to select Radio.
- 2 Press ▲ or ▼ to select band: [FM1] [FM2], [FM3] [AM1] or [AM2].
- 3 Press ▲ or ▼ to tune to a radio station manually.
 - Search for a radio station automatically, press ◀▶ for 3 seconds.

Play audio files

- 1 Press ◀ on the front panel to release the panel.
- 2 Insert a CD with the printed side facing up. Close the panel.
 - Play starts automatically.
 - To pause CD play, press 1 ▶ II again.
 - To resume CD play, press 1 ▶ II again.

Insert the USB device

- 1 Open the cover marked ♪ on the front panel.
- 2 Insert the USB device into the USB socket.
 - The unit starts playing from the USB device automatically.