

**MORE CAPSULE,  
MORE SOUND**

THE ENTRANCE TO THE WORLD  
OF LARGE-DIAPHRAGM CONDENSER



// **LCT 450**  
USER MANUAL

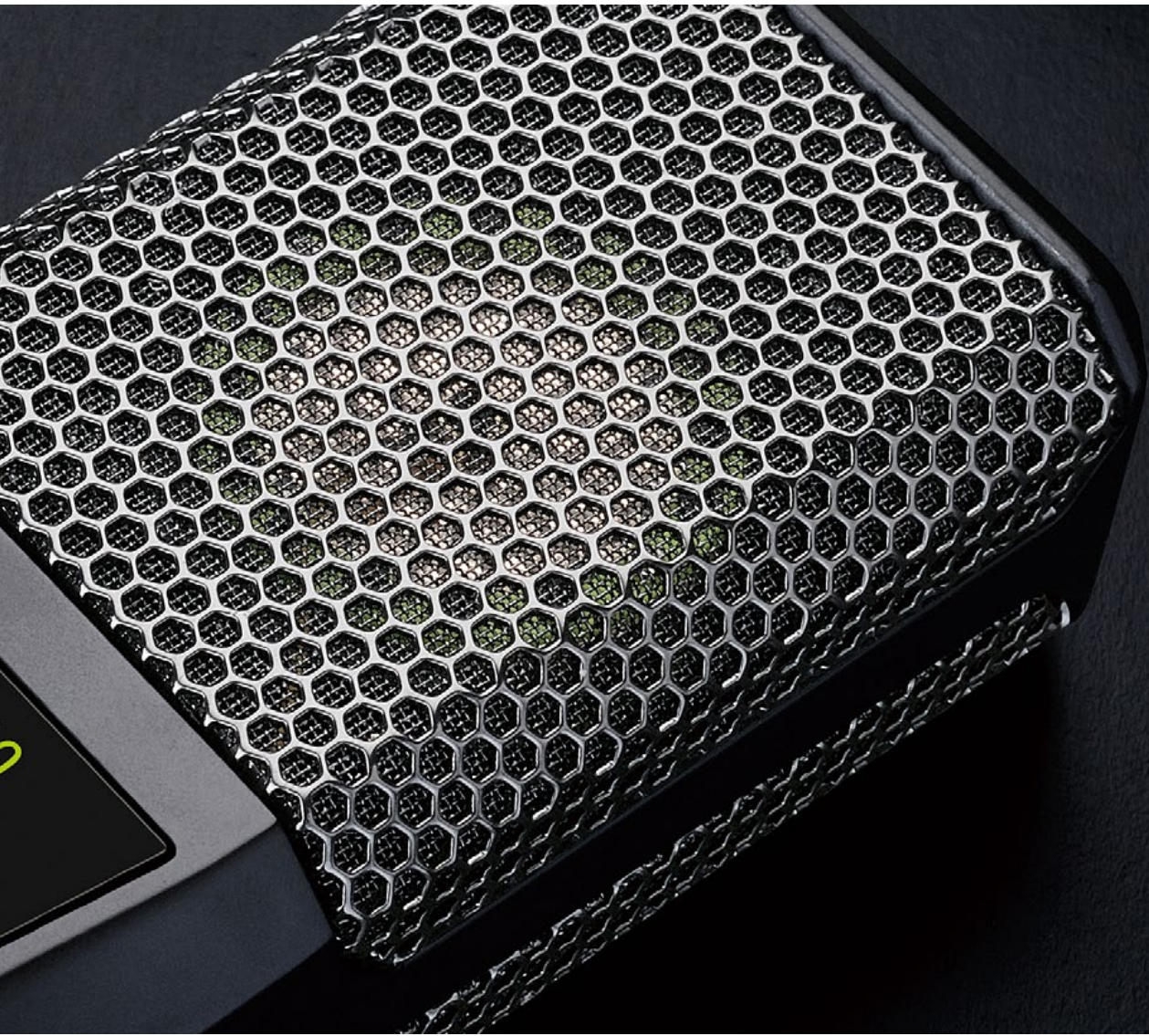
SOUNDS LIKE  **LEWITT**

## // Index

Intro .....	4
Features and top applications .....	5
User Interface .....	6
Technical Data .....	8
Safety Guidelines .....	9
Warranty .....	10
Regulatory Information .....	11







## // Intro

Thank you for choosing the LEWITT LCT 450!

The LCT 450 delivers exceptionally high value for money, that makes the LCT 450 a true studio workhorse and a perfect candidate for building up your microphone collection. The Austrian-developed LCT 450 features a 1-inch cardioid condenser capsule, it delivers everything you would expect from a studio microphone: A warm, round and full bodied sound with first class transient response and silky sweet high end, which makes it an impeccable choice for vocals and all sorts of acoustic instruments.

The cardioid polar pattern perfectly qualifies the LCT 450 for coincident (XY) and near coincident (ORTF) stereo recording techniques such as classic drum & percussion overheads, string sections, choir, grand piano or even stereo vocal recordings, when spaciousness and ambience is needed.



## // Features

- // LEWITT's entrance to the world of large diaphragm condenser microphones at an affordable price
- // Natural authentic sound with first-class transient response
- // A perfect choice for vocals, overheads and acoustic instruments
- // Cardioid polar pattern for effective rear sound rejection
- // 1-inch capsule in a small housing
- // Corrosion-resistant gold-plated 3-pin XLR output connector
- // Illuminated user interface for quick and easy handling in dark environments
- // Noiseless push buttons for attenuation and HPF selection
- // Immune to electromagnetic interference thanks to transformerless preamplifier circuitry

## // Top applications

- // Vocals & background vocals
- // Classic drum & percussion overhead
- // Acoustic instruments (strings, guitars, piano and similar)
- // Ambitious stereo recording techniques (XY, ORTF)

## // User Interface



① **Status Indicator** // Indicates different active settings such as key lock, automatic attenuation, clipping history ... see below for details.

② **Low-cut filter** // Use to reduce unwanted low frequency noise caused by wind, footsteps, structure-borne noise or likewise. The low-cut filter at 80Hz affects the microphone input by 12 dB per octave and can be set by pressing the left pushbutton ④.

③ **Pre-Attenuation** // Use this pad function to prevent clipping when recording very loud sources. Choose between 0 and 20 dB of attenuation. Change settings with the right pushbutton ⑤.

④ **Left push button** // Push to change low-cut settings. It also activates the Clipping History.

**Clipping History** // Pressing the left pushbutton for more than two seconds activates and deactivates the Clipping History. If clipping occurred since you have checked previously, the Status Indicator ① blinks red, the manually set level of pre-attenuation blinks and the suggested attenuation setting is illuminated. The history will be cleared after leaving the Clipping History.



**5 Right pushbutton** // Push to change attenuation settings. Also activates Automatic Attenuation.

**Automatic Attenuation** // Pressing the right push button for more than two seconds activates (Status Indicator **1** turns red) and deactivates (Status Indicator **1** turns white) Automatic Attenuation. In this mode the microphone adjusts the attenuation setting automatically when clipping has occurred.

**Key Lock** // Press and hold either the left or the right push button for about four seconds to activate (Status Indicator **1** not illuminated) or deactivate (Status Indicator **1** turns white) the key lock.

## // Tech Data

### Acoustical operating principle //

pressure gradient transducer, externally polarized

### Transducer Ø //

25.4 mm / 1 inch

### Polar pattern //

Cardioid

### Frequency range //

20 ... 20,000 Hz

### Sensitivity //

16 mV / Pa (-36 dBV)

### Signal / noise ratio //

79 dB (A)

### Equivalent noise level //

15 dB (A)

### Dynamic range of FET Mic. Amp. //

138 dB (A)

### Max. SPL for 0,5 % THD //

153 dB, 0 dB pre-attenuation

173 dB, 20 dB pre-attenuation

### Pre-attenuation pad //

20 dB, switchable

### Low-cut //

6 dB / octave at 80 Hz

### Rated impedance //

< 150 ohms

### Rated load impedance //

> 1.000 ohms

### Supply voltage //

48 V +/- 4 V

### Current consumption //

5.5 mA

### Connector //

gold plated 3-pin XLR

### Dimensions //

138 x 52 x 36 mm / 5.43 x 2.04 x 1.42 inch

### Net weight //

357 g / 13.12 oz.





## // Safety Guidelines

// The capsule is a sensitive, high precision component. Make sure you do not drop it from high heights and avoid strong mechanical stress and force.

// To ensure high sensitivity and best sound reproduction of the microphone, avoid exposing it to moisture, dust or extreme temperatures.

// Keep this product out of the reach of children.

// Do not use force on the switch or cable of the microphone.

// When disconnecting the microphone cable, grasp the connector and do not pull the cable.

// Do not attempt to modify or fix it. Contact qualified service personnel in case any service is needed. Please do not disassemble or modify the microphone for any reasons as this will void users warranty.

// The casing of the microphone can be cleaned easily using a wet cloth, never use alcohol or another solvent for cleaning. If necessary the foam wind stopper can be washed with soap water. Please wait till it is dry before using it again.

// Please also refer to the owner's manual of the component to be connected to the microphone.

## // Warranty

All products manufactured by LEWITT GmbH feature a limited two-year warranty. This two-year warranty is specific to the date of purchase as shown on your purchase receipt.

LEWITT GmbH shall satisfy the warranty obligations by remedying any material or manufacturing faults free of charge at LEWITT's discretion either by repair or by exchanging individual parts or the entire appliance. Any defective parts removed from a product during the course of a warranty claim shall become the property of LEWITT GmbH.

While under warranty period, defective products may be returned to the authorized LEWITT dealer together with original proof of purchase. To avoid any damages in transit, please use the original packaging if available. Please do not send your product to LEWITT GmbH directly as it will not be serviced. Freight charges have to be covered by the owner of the product.

For further information please visit [www.lewitt-audio.com](http://www.lewitt-audio.com) or check your warranty card.



## // Regulatory Information

Changes or modifications not expressly approved by the party responsible for compliance could void the user's authority to operate the equipment.

This device complies with part 15 of the FCC Rules. Operation is subject to the following two conditions: (1) This device may not cause harmful interference, and (2) this device must accept any interference received, including interference that may cause undesired operation.

Declaration of conformity can be requested at [info@lewitt-audio.com](mailto:info@lewitt-audio.com).

**Manufacturer Details**  
LEWITT GmbH  
Burggasse 79  
1070 Vienna, Austria

DI Roman Perschon  
CEO LEWITT GmbH

