

GeoMax TPS

Zipp20 Series Installation Guide



Version: 1.0
English

Tablet of Contents

1	INTRODUCTION.....	3
2	PREPARATION OF THE TPS INSTRUMENT	4
2.1	Battery Charging.....	4
2.2	Obtaining Firmware Files	4
2.3	Uploading Onboard Firmware to the Instrument	5
3	UPLOADING GEOMAX FIELDGENIUS.....	6
3.1	Windows Mobile Device Center	6
3.2	Connecting to the PC	6
3.3	Installation of GeoMax FieldGenius.....	8
3.4	Registration of GeoMax FieldGenius.....	11
3.5	Starting GeoMax FieldGenius	12
4	RE-, UNINSTALL OR UPDATE GEOMAX FIELDGENIUS	13
4.1	Re-Install/Update GeoMax FieldGenius	13
4.2	Uninstall GeoMax FieldGenius	14

1 INTRODUCTION

This guide provides complete step-by-step instructions for preparing the Zipp20 total station series for measuring work.

The latest versions of GeoMax documents and software referred to in this document are all available from the GeoMax Partner Area in the Zipp20 folder at http://www.geomax-positioning.com/Partner-Area-Login_1186.htm.

Only the tasks required for the initial setup are described in this document. The instructions cover all the required installation tasks for the Zipp20 total station and the GeoMax FieldGenius onboard software.

For further information regarding the operation of the Zipp20, please refer to the respective manuals.

The Zipp20 Quick Guide is included with the container set. The comprehensive user manual is available from the included USB stick and also from GeoMax Partner Area in the Zipp20 folder at www.geomax-positioning.com.

The GeoMax FieldGenius manual can be downloaded from the GeoMax Partner Area at www.geomax-positioning.com.

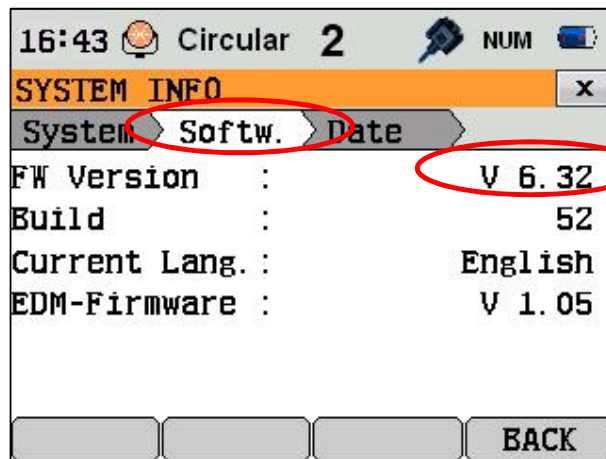
2 PREPARATION OF THE TPS INSTRUMENT

2.1 BATTERY CHARGING

Before using the instrument, the ZBA301 battery should be charged. Insert the battery into the ZCH301 charger and plug the adapter into an AC supply. Do not disconnect from power until the green FULL indicator flashes, indicating that the battery is fully charged. Once charged, insert the battery into the side cover slot of the Zipp20 instrument and switch on.

2.2 OBTAINING FIRMWARE FILES

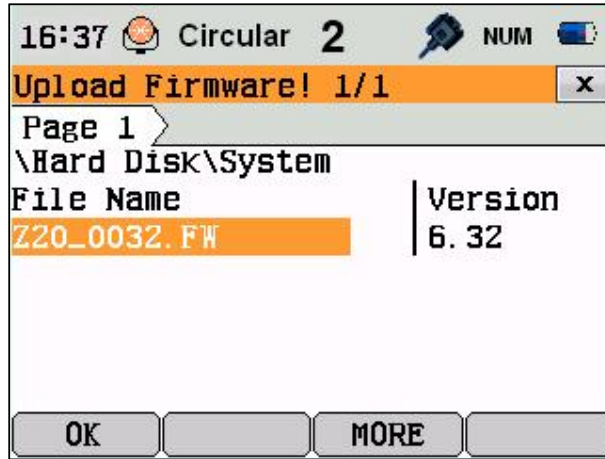
When receiving a new instrument, it should be checked that the latest firmware version is installed. The installed version can be seen on the Software Information page, accessed by starting the Zipp20 application and pressing (3)-Tools / (2)-SysInfo / (FNC2)-Softw. If the displayed firmware version does not match the one available from GeoMax Partner Area, then the instrument should be updated.



To customize the instrument for personal requirements, the firmware file in the required language should be installed. The respective files can be obtained from GeoMax Partner Area in the Zipp20/Firmware folder and are in the format Zipp20_XX.fw where "XX" indicates the specific language. The firmware files also contain all available applications.

2.3 UPLOADING ONBOARD FIRMWARE TO THE INSTRUMENT

The firmware file is uploaded to the instrument directly from the USB stick. Therefore copy the downloaded file to the System directory on the USB stick using a PC. Insert the stick into the instrument and power on. To load the file onto the instrument, start the Zipp20 application and choose (3)-Tools / (3)-Load FW / (F1)-Firmware. The content of the System directory are now shown. Select the firmware file and choose (F1)-OK to start the upload process.



Note: Ensure that a fully charged battery is inserted when uploading firmware. This process can take some time and the power supply must NOT be interrupted during the loading process.

Your Zipp20 instrument is now ready for use.

3 UPLOADING GEOMAX FIELDGENIUS

3.1 WINDOWS MOBILE DEVICE CENTER

An upload and installation of the GeoMax FieldGenius on the Zipp20 requires a PC or Laptop. To upload the field software to the Zipp20, it is mandatory to install the Windows Mobile Device Center on the PC or Laptop.



Windows Mobile Device Center was written as a successor to the ActiveSync program that was previously used to synchronize Windows CE based devices with Windows operating systems prior to Windows Vista. If the operating system is not Win7, Win8 or Vista such as Windows XP or Windows 2000, you are required to install Microsoft ActiveSync. Both applications are free of charge and can be downloaded from various websites (e.g. Microsoft).

3.2 CONNECTING TO THE PC

If using Win8, Win7 or Vista on your PC, the Windows Mobile Device Centre needs to be installed. For earlier versions of Windows, install Microsoft ActiveSync. After the software installation, open the Windows Mobile Device Centre and connect the Zipp20 to your PC. Use the USB cable supplied with the Zipp20 as shown below.



Turn on the instrument and the connection will be established. After the initial connection, the Windows Mobile Device Centre or ActiveSync will automatically start and connect as soon as the powered instrument is connected to the PC.



The contents of the PS336 internal memory can also be seen now with Windows Explorer and are defined as a drive named Zipp20_SerialNumber.

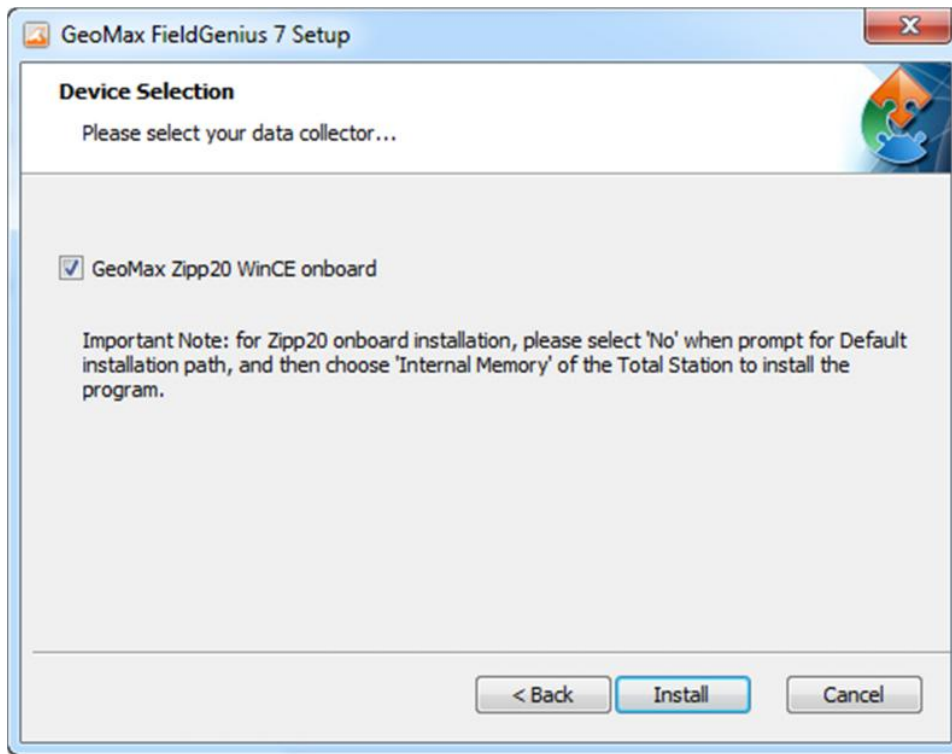
3.3 INSTALLATION OF GEOMAX FIELDGENIUS

The latest version of GeoMax FieldGenius can be downloaded from the GeoMax website, at <http://www.geomax-positioning.com>. Here the latest installation version and user manual of GeoMax FieldGenius in English is available. Download the Devices Installer and save onto your PC. On this page, all the available languages for FieldGenius are shown. Click on the required language and save the installation file onto your PC.

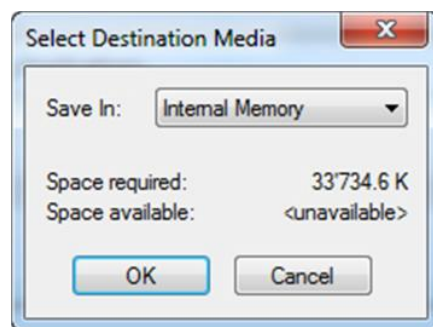
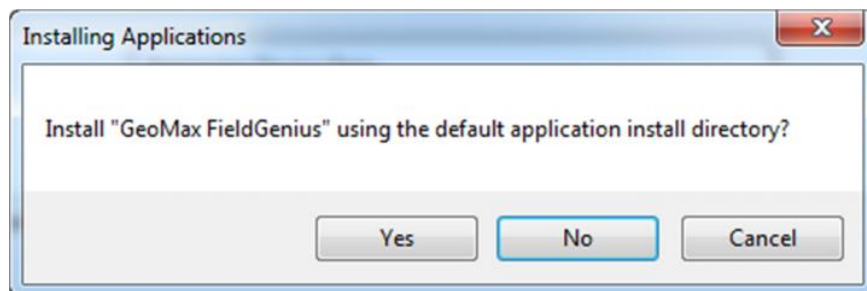
With the Zipp20 connected to your PC, run the installer file `geomax-fieldgenius7-onboard-7.1.11.2-enu.exe`. The PC will attempt to connect to the handheld and install the GeoMax FieldGenius software. Follow the Windows installation wizard.



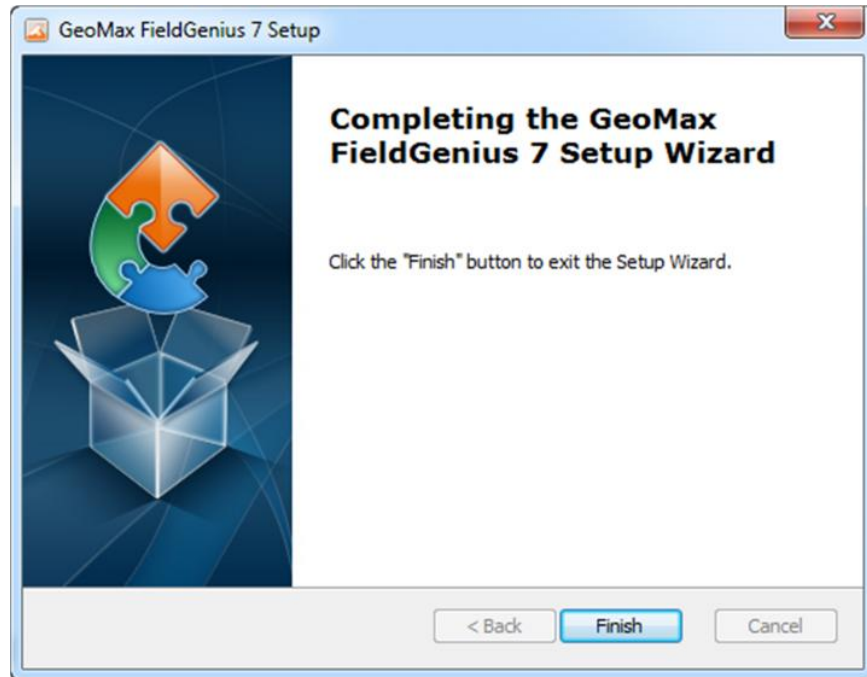
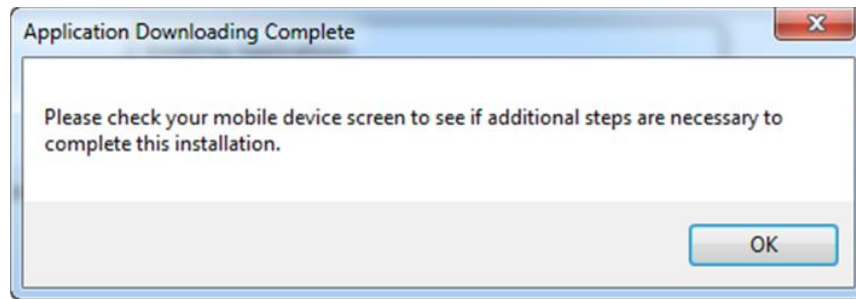
At the Device Selection window select the data collector GeoMax Zipp20 WinCE onboard.



Please select "No" when prompt for Default Installation Path and then choose "Internal Memory" of the Total Station to install the program.



When the application downloading is completed, you are requested to check the Zipp20 screen. Click OK and Finish to exit the installation process on your PC.



Confirm the proposed installation folder for GeoMax FieldGenius on the Zipp20 screen by clicking OK. The installation on the Zipp20 will be started.



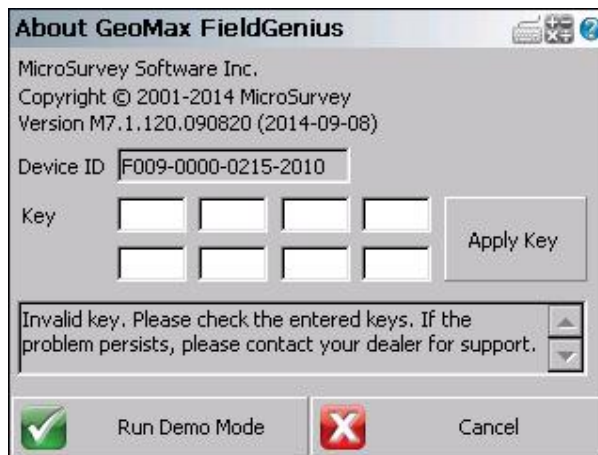
Once the installation process is completed, the GeoMax FieldGenius software can be started by selecting it from the Zipp20 Desktop.



3.4 REGISTRATION OF GEOMAX FIELDGENIUS

When GeoMax FieldGenius is started, a registration window with the Device ID is displayed as shown below. It is possible to use GeoMax FieldGenius without registration by tapping Run Demo Mode. This provides full functionality, but is limited to the storage of 30 points.

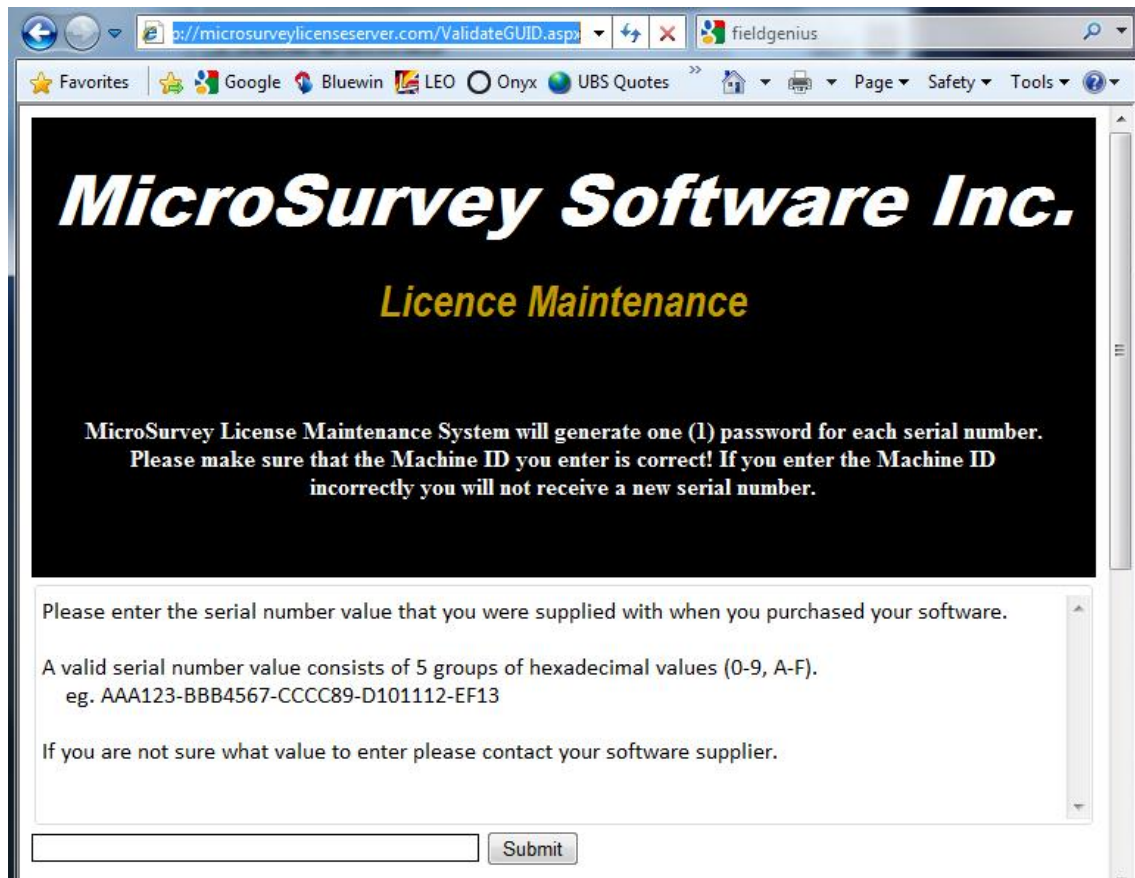
To register your version of GeoMax FieldGenius, an activation key needs to be entered. The displayed Device ID, together with the GUID (global unique identity), is used to obtain the key. The GUID can be found in the MicroSurvey envelope that was supplied together with Zipp20 equipment.



The activation key can be generated by using MicroSurvey's web portal, at the link <http://microsurveylicenseserver.com/ValidateSerialNumber.aspx>. This web portal is

shown in the screenshot below. At the blank serial number field, enter your GUID and click Submit. At the next screen, enter the Device ID shown on the Zipp20.

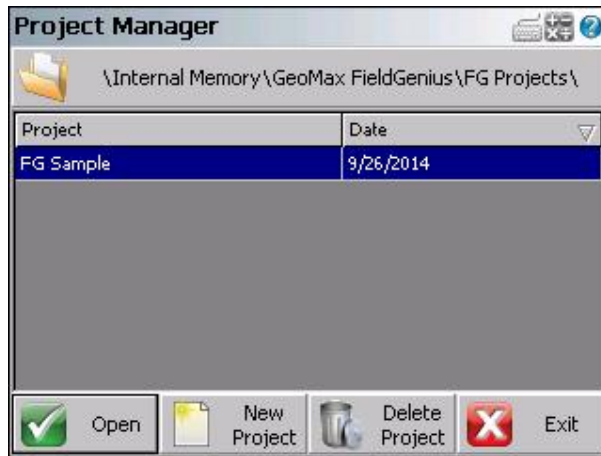
Note: Make certain that the entered Device ID is correct the first time, since an activation key cannot be generated again with a different ID.



The activation key will then be displayed in the password field. Enter this key into the Zipp20 at the provided fields and click Apply Key. More details about the GeoMax FieldGenius installation and registration can be found in the user manual available from the GeoMax Partner Area.

3.5 STARTING GEOMAX FIELDGENIUS

The first screen displayed when starting GeoMax FieldGenius is the Project Manager. Create a new project by tapping the appropriate icon and enter a project name. The onscreen keyboard can always be accessed by double tapping on the editable field. The screens that follow are used to set the default settings for this project.



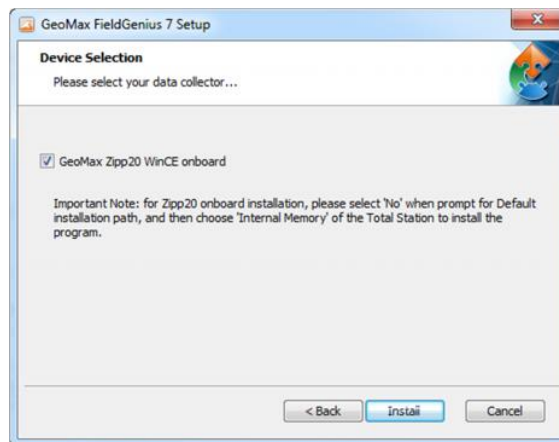
You are now ready to work with the Zipp20 total station and GeoMax FieldGenius. More details about the use of GeoMax FieldGenius can be found in the user manual document available from the GeoMax Partner Area.

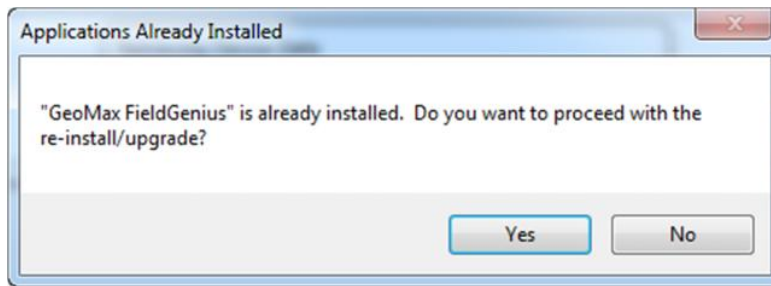
4 RE-, UNINSTALL OR UPDATE GEOMAX FIELDGENIUS

4.1 RE-INSTALL/UPDATE GEOMAX FIELDGENIUS

Occasionally it may be necessary to update or reinstall your GeoMax FieldGenius software. An update or re-install of the GeoMax FieldGenius software follows mainly the procedure which was described in this document in chapter 3.3 Installation of GeoMax FieldGenius. To start the update or re-install please refer to chapter 3.3.

After clicking Install, the installation file will detect the current installed GeoMax FieldGenius software.

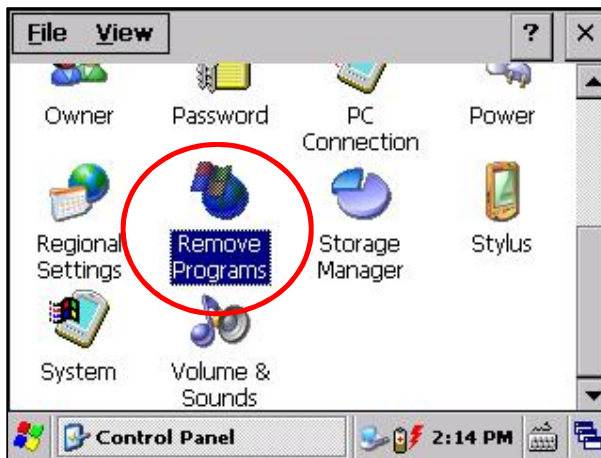
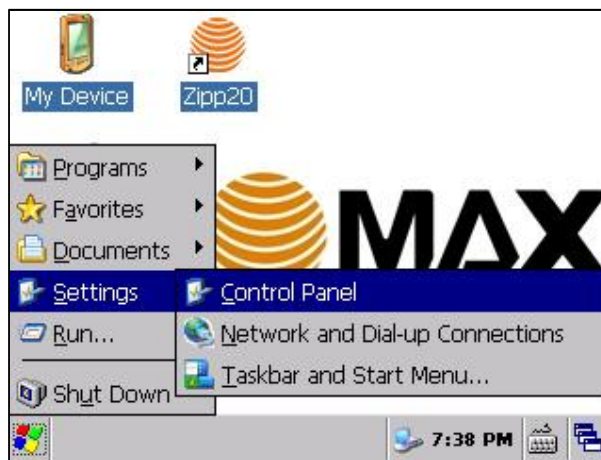




Confirm this message by clicking Yes. The installation will be continued as known from the very first installation.

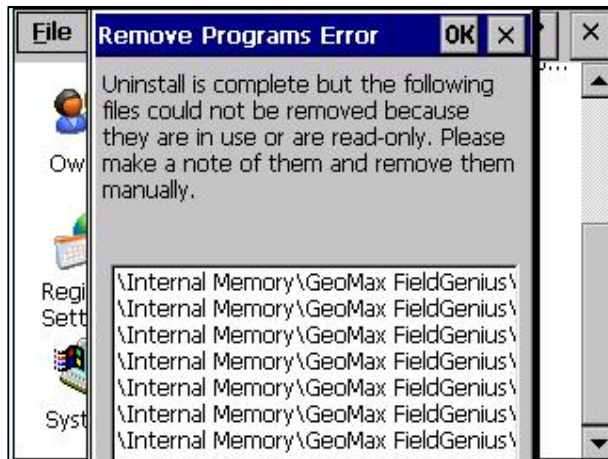
4.2 UNINSTALL GEOMAX FIELDGENIUS

To uninstall GeoMax FieldGenius from the Zipp20, you need to start the software at least one time after the instrument has been turned on. Exit GeoMax FieldGenius again and go to the Windows program "Remove Programs".



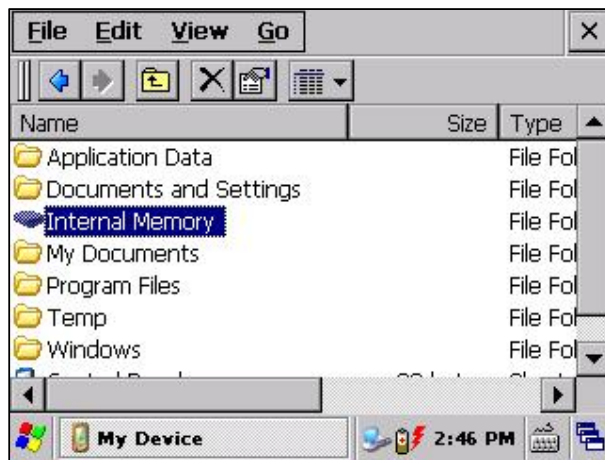


Mark GeoMax FieldGenius and click Remove. The program will be removed. A message appears as further folder and files still need to be removed.



In order to complete the uninstall process, the following folder and files need to be deleted manually. Please access the Windows Explorer with My Device.





The following folder and files need to be deleted in the Internal Memory drive:

- Internal Memory\GeoMax FieldGenius (remove complete folder)
- GeoMax FieldGenius.Ink in Internal Memory\Documents and settings\Programs
- GeoMax FieldGenius.Ink in Internal Memory\Documents and settings\Desktop

To finish the uninstall process the instrument needs to be shut down.