

# Service Manual



VideoCAM Express II

Version1.0

---

---

# Table of Contents

<b>1. Disassembly and Assembly</b> .....	2
<b>2. No Power Testing Procedure</b> .....	4
A. Check power with a new USB cable.....	5
<b>3. Image Is Blur or Can Not Capture Image Testing Procedure</b> .....	6
A. Rotating the Lens cover.....	7
B. Check the snapshot button.....	8
<b>4. Cam Can Not Connect Computer Testing Procedure</b> .....	9
A. Check USB cable.....	10
B. Check the Y1.....	11
C. Replace PCBA.....	12
<b>5. Part List</b> .....	13
<b>6. Tooling</b> .....	13

## 1. Disassembly and Assembly

Disassembly process:

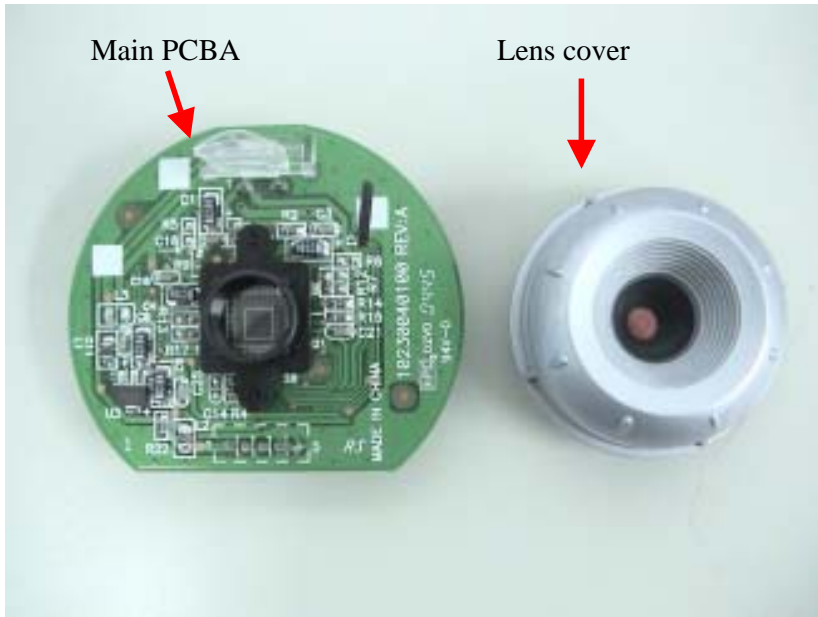
Step1:

Use screwdriver to loose screw and open side/top covers, base and main PCBA as below pictures.



**Step2:**

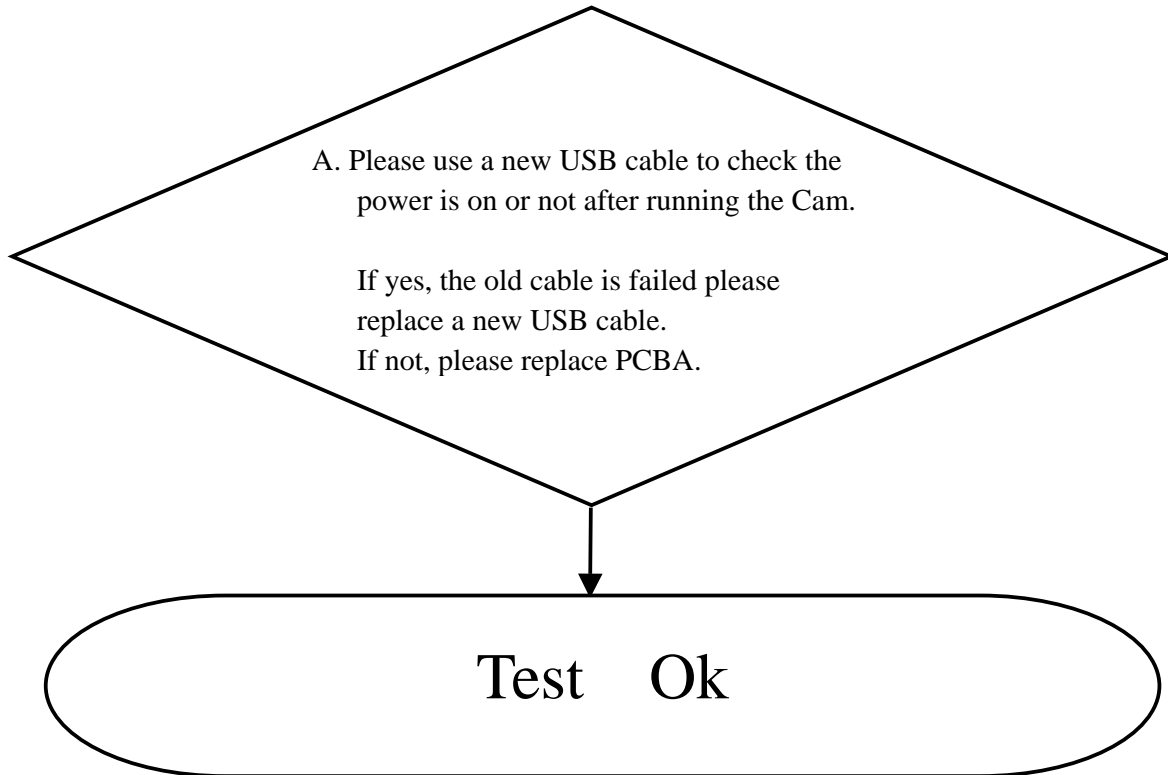
**Rotate lens cover to separate lens cover from main PCBA .**



**Assembly process:**

**Reverse steps as above to install VideoCam Express II.**

## 2. No Power Testing Procedure



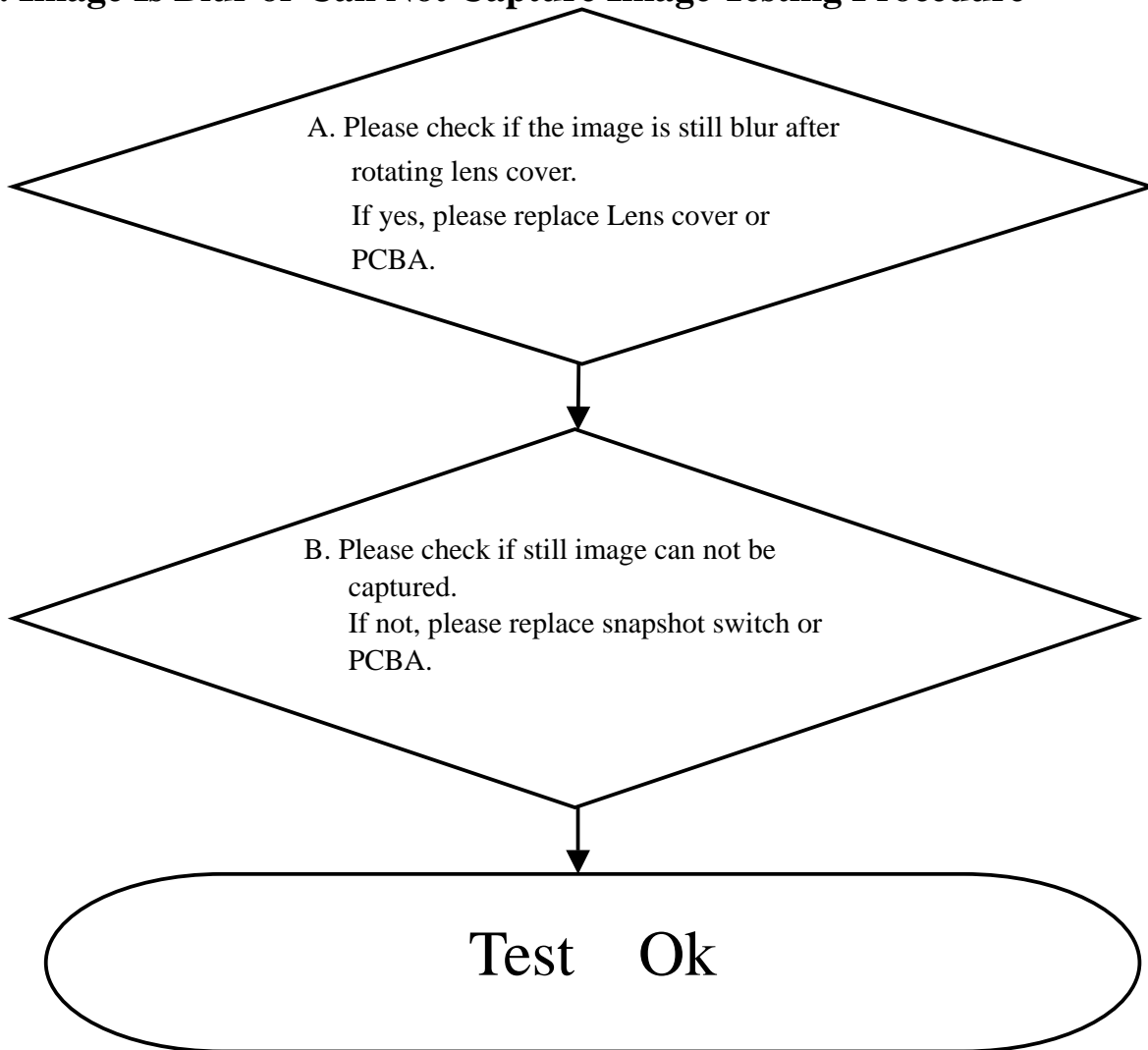
A. Use a new USB cable to check the power is on or not after running the Cam.

If yes, it means the old USB cable is failed please replace USB cable.

If not, please replace a new PCBA.

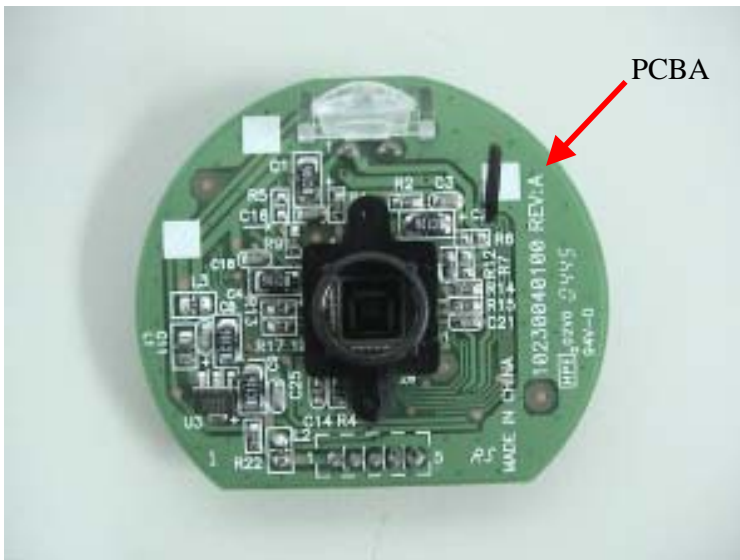


### 3. Image Is Blur or Can Not Capture Image Testing Procedure



A. Check if the image is still blur after rotating the lens cover.

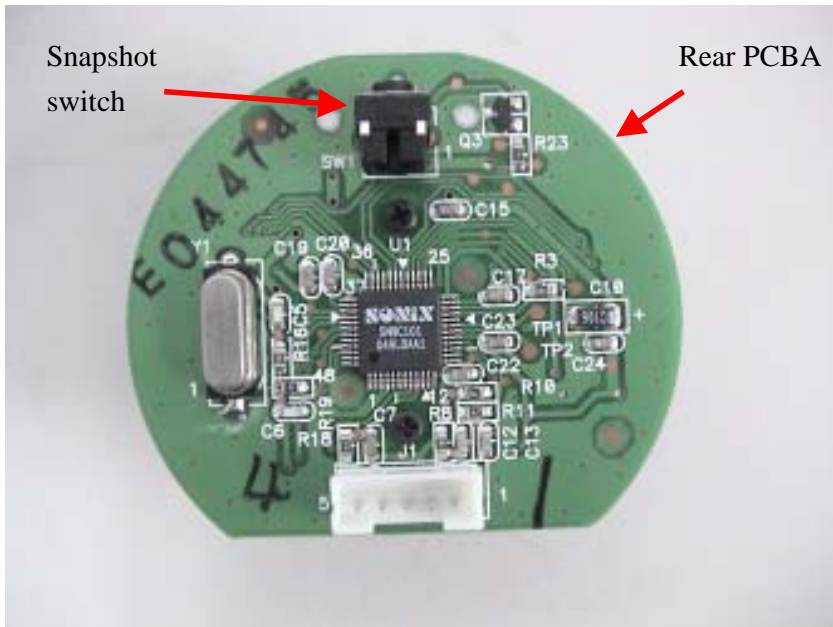
If yes, please replace Lens cover or PCBA.



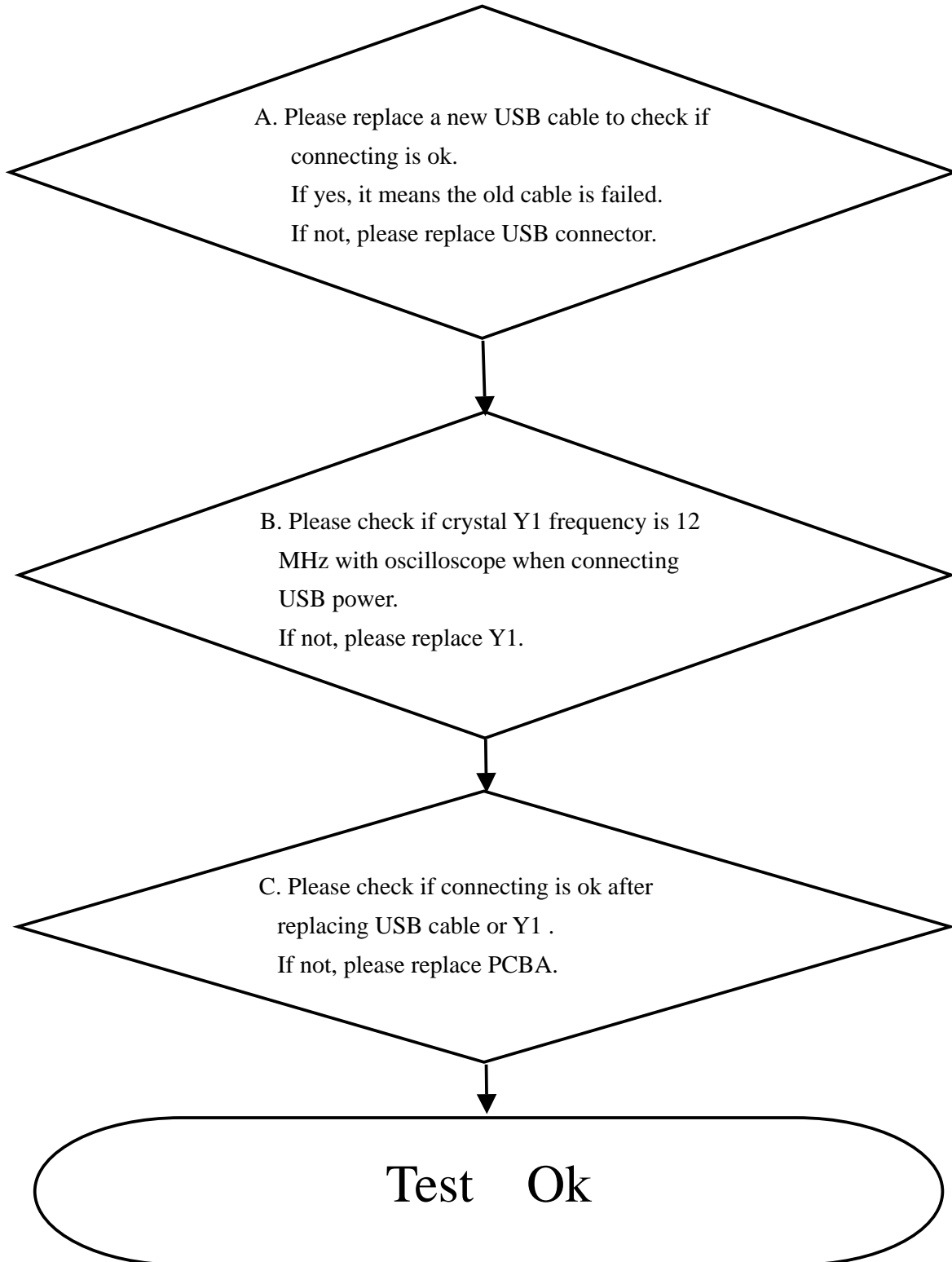


B. Check if still image can not be captured after pressing snapshot button.

If not, please replace snapshot switch or PCBA.



#### 4. Cam Can Not Connect Computer Testing Procedure



A. Please replace a new USB cable to check if connecting is ok.

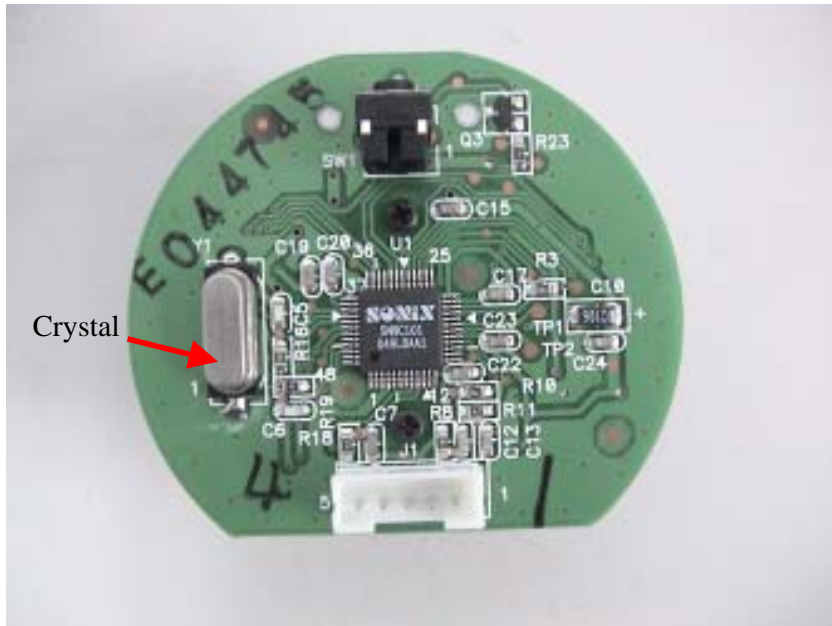
If yes, it means the old USB cable is failed.

If not, please replace USB connector.



B. Check if Crystal Y1 frequency is 12 MHz with oscilloscope when connecting USB power.

If not, please replace Y1.



C. Check if connecting is ok after replacing USB cable or Crystal Y1.

If not, please replace PCBA.



## 5.Part List

Item	Part Number	Description	Position
1	15160052001	USB cable	
2	20200053101	PCBA	
3	15130126101	Lens cover	
4	10110003200	USB connector	J1
5	10800102000	X'tal,12 MHz,30PPM,49US	Y1
6	10900117100	Snapshot switch	SW1
Item Number.:32200011101			

## 6. Tooling

Item	Description	Remark
1	Oscilloscope (Tektronix TDS 3032) or higher	
2	Screwdriver(2.0m/m)	

### 1. Oscilloscope

