

# Service Manual



NetScroll 100 (PS2)

---

---

# Table of Contents

Chapter 1. Introduction .....	2
a. System Requirements.....	2
Chapter 2. Troubleshooting.....	3
Chapter 3. Testing Procedures.....	4
a. Testing Flow Chart.....	4
b. Check PS/2 cable.....	5
c. Check Mouse Cursor.....	6
d. Check Mouse Buttons.....	7
Chapter 4. Removal and Replacement.....	9
Chapter 5. Parts list .....	110
Chapter 6. Tools .....	110

## Chapter 1. Introduction

### a. System Requirements

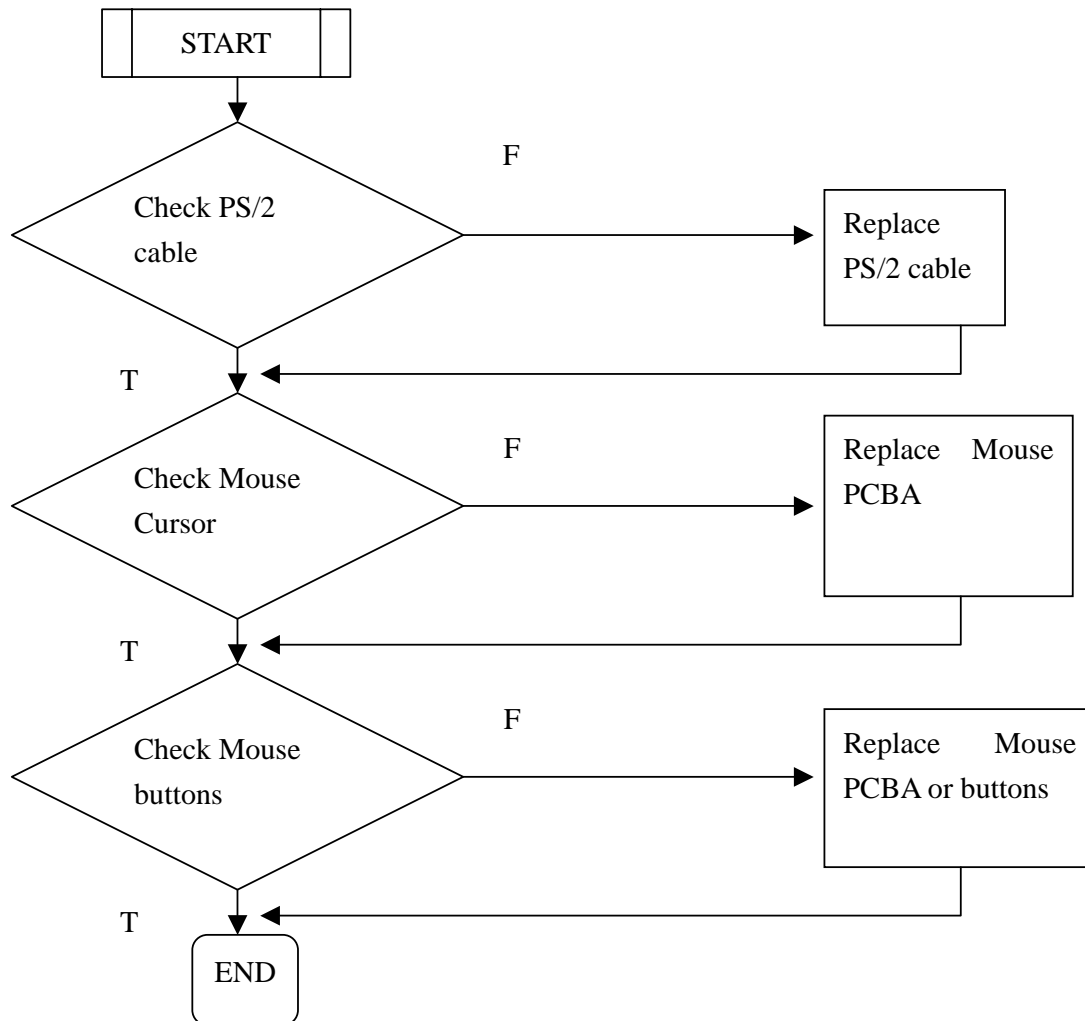
- ◆ IBM PC Pentium 233 compatible or higher
- ◆ Windows XP/Me/2003/2000/98SE or Mac OS or later(for USB model)
- ◆ Available USB port
- ◆ Available PS/2 port
- ◆ CD/DVD-ROM drive for software installation

## Chapter 2. Troubleshooting

Item	Condition	Probable Reasons	Solutions
1. Mouse can't work	1. Cursor can't work	1. PS/2 cable or mouse failed	Change PS/2 cable or mouse PCBA
2. Button can't work	1. Press button no respond	1. Mouse PCBA or buttons failed	Change mouse PCBA or buttons
3. Cursor can't move smoothly	1. Cursor can't move smoothly	1. Sensor failed	Change PCBA or sensor

## Chapter 3. Testing Procedures

### a. Testing flow chart



b. Check PS/2 cable when mouse can not work.

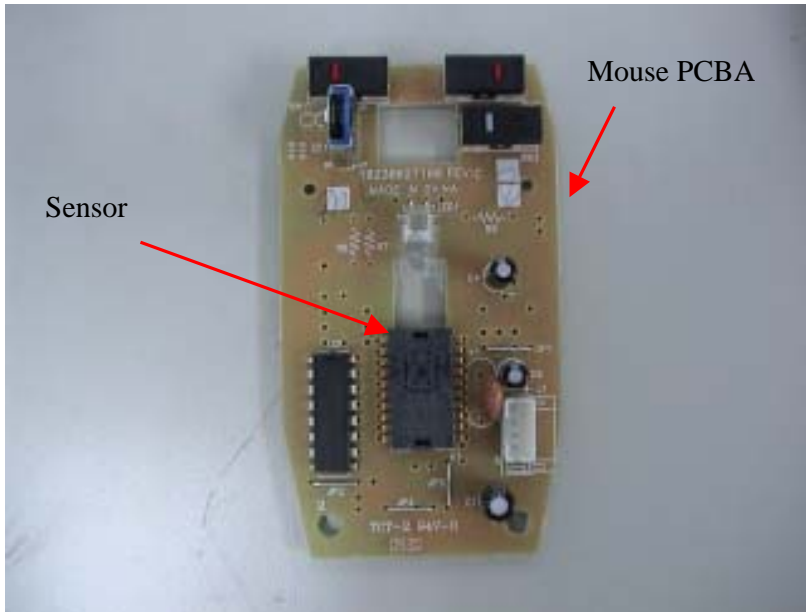
When mouse can not work please use a good PS/2 cable to check if the mouse can function or not ,if mouse can function that means the old PS/2 cable is failed so please replace a new PS/2 cable.



### c. Check Mouse cursor

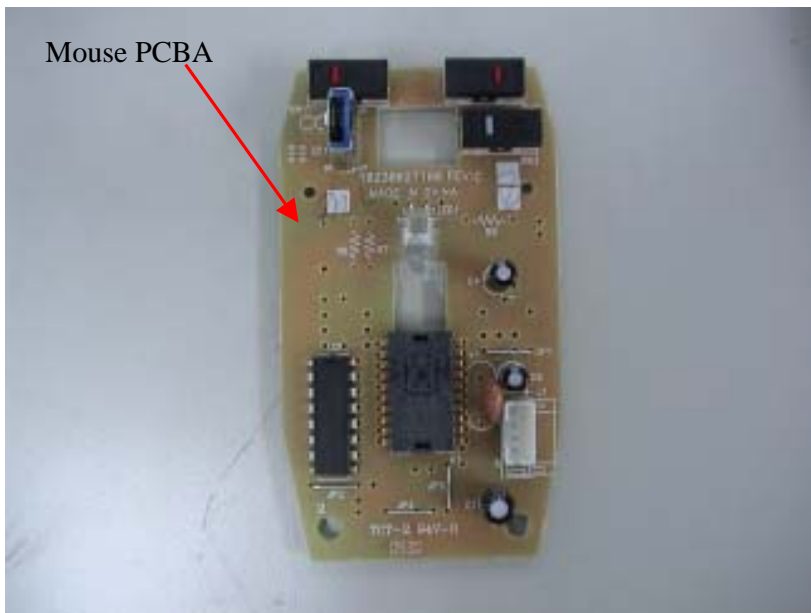
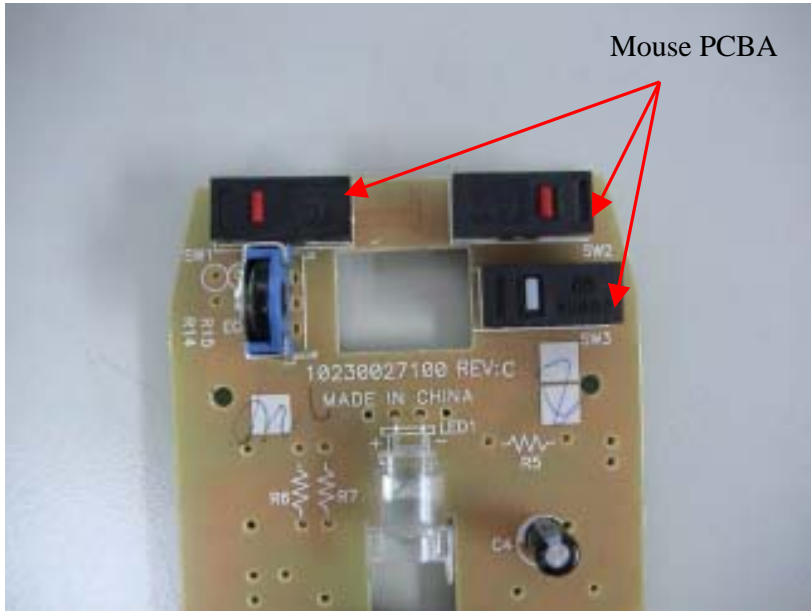
If the cursor can not still move after replacing PS/2 cable , please replace mouse PCBA .

If cursor can not move smoothly, please replace sensor(U1).




#### d. Check mouse buttons

If the mouse buttons do not function, please replace SW1/SW2/SW3 or mouse PCBA .





## Chapter 4. Removal and Replacement

Step	Description	Picture
1. Turn mouse over	To disassemble the mouse, you have to remove the pad away and loosen screw to take mouse apart.	 <p>The top photograph shows a black and white wired mouse with a green PS/2 connector. The bottom photograph shows the mouse from the underside, with a red arrow pointing to a small screw on the bottom pad, labeled "Screw inside the pad".</p>

2. Loosen screw

Using screwdriver to loosen 1 screw as red arrow pointed and then you can take the upper cover apart.



3. Take apart PCBA

Disconnect PS/2 cable and then pick PCBA directly.

The PCBA is the most important part of mouse.



## Chapter 5. Part list

Item	Parts number	Description	
1	20000703101	Mouse PCBA	
2	10300192100	Sensor	U1
3	15160799101	PS/2 cable	
4	10900016000	Buttons	SW1/SW2 /SW3
Item number:31010863101			

## Chapter 6. Tools

1. Screwdriver cross
2. Soldering iron