

SERVICE GUIDE

KYE SYSTEMS CORP.

STANDARD KEYBOARD



Product Name: SlimStar 100(U+P)

Table of Contents

Getting Started.....	2
How to Use the Service Guide.....	3
Conventions Used in this Guide.....	4
Necessary Tools.....	4
Safety Precautions.....	4
Chapter 1. How to Handle Defective Returns.....	5
1.1 Overview.....	5
1.2 Problems.....	6~7
Chapter 2. How to Check the Keyboard.....	8
2.1 How to check the Assembly of Keyboard.....	8
2.2 How to Test the Keyboard.....	8
2.3 How to Take Apart your keyboard.....	9
Chapter 3. Important Notes	
3.1 Packing requirement for sending the PCB assembly by post.....	9
3.2 Short of spare parts while repairing a keyboard.....	9
Appendix : Part List.....	10

Getting Started

How to Use the Service Guide

This Service Guide provides instructions and illustrations of servicing keyboard related to KYE SlimStar 100 Standard Keyboard. In this section, a basic preparation for servicing the keyboard will be instructed, and therefore please read this section carefully, before you start servicing the keyboards.

Divided into 6 sections, this Service Guide describes an in-depth explanation of servicing keyboard step by step. Each topic may be related with each other; hence you are highly recommended to read this guide from cover to cover first. After that, you may go directly to may specific topic that most interests you or meets your immediate needs.

Chapter 1: How to Handle Defective Returns

Gives a brief working flow for handling defective returns, by which you may distinguish the causes of the defective returns with the help of these working flows.

Chapter 2: How to Check the Keyboard

Gives complete hardware and Software on how to uninstall and install the keyboard.

Chapter 3: Important Notes

Gives information on how to have your keyboard packed well and what to do when being short of spare parts.

Appendices : Provides part lists

Convention Used in this Guide

Pay Specific Attention : Instructions that are important to remember and may mistakes.

Caution : Information that, if not followed, may result in damage to the product.

Necessary Tools

**Desktop or Notebook
Screwdriver (Cross type)**

Safety Precautions

The following precautions should be observed in handling the keyboard described in this guide :

Place the keyboard on a flat, level and stable surface.

Do not place the keyboard in environments subject to mist, smoke, vibration, excessive dust, salty or greasy air, or other corrosive gases and fumes.

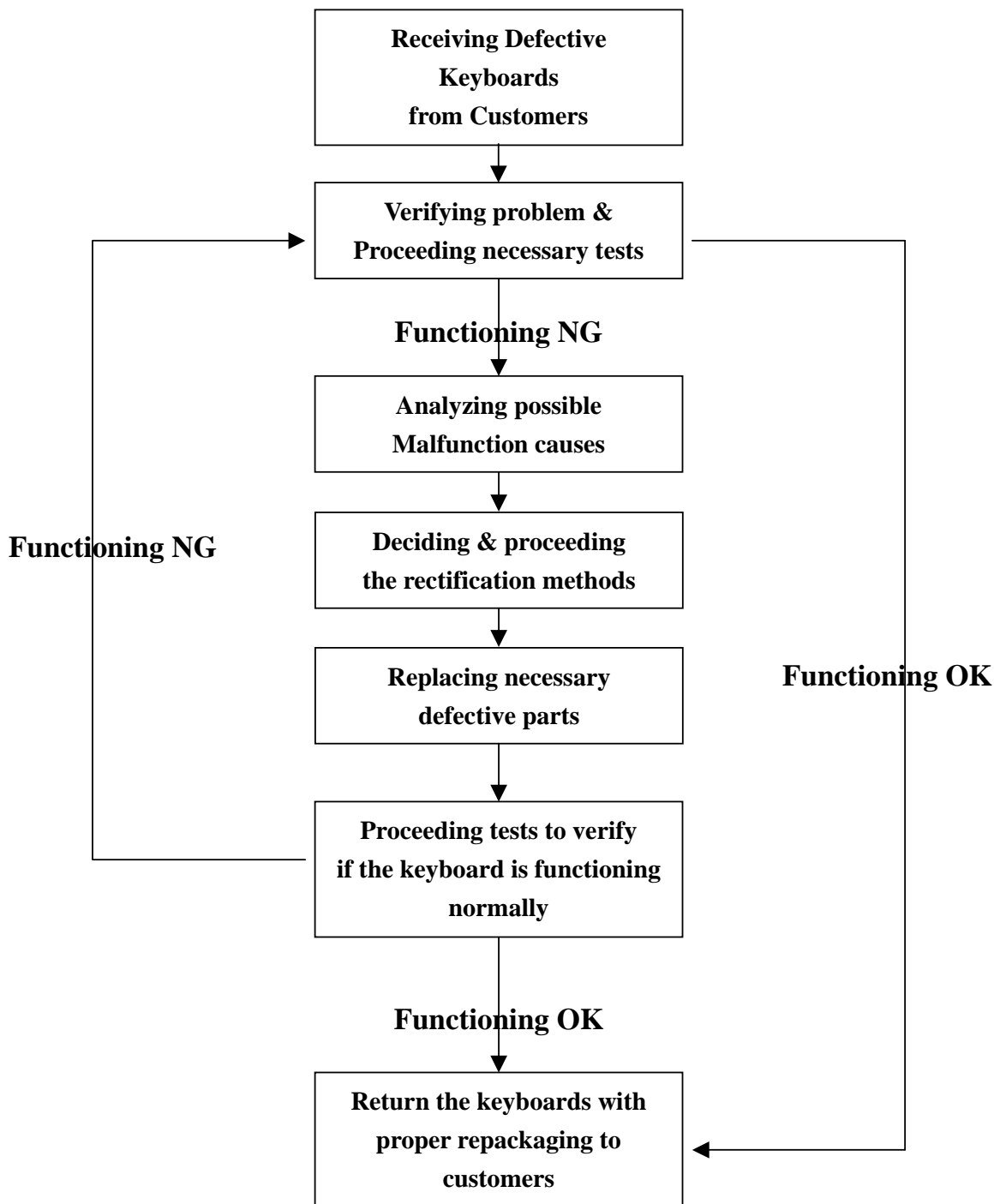
Do not drop or jolt the keyboard.

Do not perform any maintenance with wet hands.

Prevent foreign substances, such as water, other liquids or chemicals, from entering the keyboard while performing maintenance procedures on the keyboard.

Chapter 1. How to Handle Defective Returns

1.1 Overview



1.2 Problem

Problem Descriptions

1.2.1 Keystuck wrong key-top arrangement.

Solution 1 : Re-fix link



Solution 2 : Change Key-Top



Solution 3 : Change Rubber Sheet



1.2.2 Standard key w/no good return force

Solution 1: Change Rubber Sheet



1.2.3 No Power

**Solution 1 : Re-solder the Cable wire
With the PCBA**



Solution 2 : Change PCBA



1.2.4 Key no function

Solution 1 : Change Membrane



Solution 2 : Change PCBA

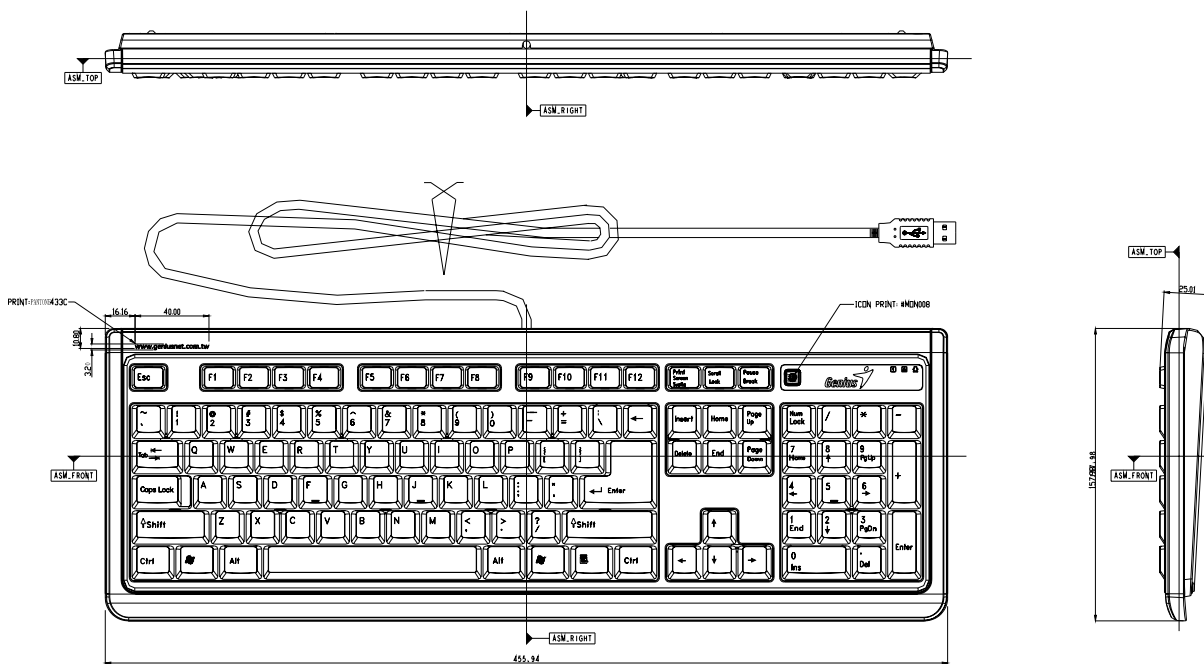


Chapter 2: How to Check the Keyboard

2.1 How to check the Assembly of Keyboard

2.1.1 Check all the accessories of the keyboard packing

Check the Keyboard



Dimension Top

Check the Keyboard Recognizance

2.1.2 How to test the Keyboard

- Step 1. To take your computer.
- Step 2. Take the Keyboard to connect the computer.
- Step 3. Turn on your computer.
- Step 4. To try the Keyboard

2.1.3 How to take apart your Keyboard

Step 1. Take the screwdriver.

Step 2. Turn on the case.

Step 3. Check the cable line have to broken.

Step 4. Check the PCB

Chapter 3. Important Notes

3.1 Packing requirement for Sending the PCB assembly by post

A keyboard mainly includes the following items : Keyboard, and PCB. PCB assembly is a kind of sophisticated electronic circuit board. Therefore, well packing will be required when sending them by post.

Some sophisticated IC components are mounted on the PCB assembly, hence it is necessary to pack each PCB assembly with a separate static protecting beg, in order to avoid static electricity.

Reliable external packing is also very important when sending the PCB assembly by post, in that it would avoid unnecessarily lost or damage.

3.2 Short of spare parts while repairing a Keyboard

If you are short of spare parts when you have some keyboards waiting to be repaired, it would be recommended to take the necessary parts from one keyboard, so that you may have the as many as keyboards be repaired and sent back to your customer, and left only one or few keyboards waiting for spare parts sending from KYE.

Appendices : Provides part lists**Item / Description**

	K6706L-A0000A-T	K6706 U.S.'A 104K USB KB	0	
	75-890040-M066	K6706 U.S.'A 104K PRINT MODULE	1	
	75-89AA40-M266	K6706 104K BLANK MODULE L-TYPE	1	
	51-846706-M000	UP-CASE K6706 HIPS #040422A1	1	
	51-846706-M010	UP-CASE FOR K6706	1	
	51-846706-M020	UP-CASE FOR K6706	1	
	55-847201-M067	SLEEP KEY FOR K7201 ABS	1	
	55-847201-M068	SLEEP KEY FOR K7201 ABS	1	
	55-847201-M065	SLEEP KEY FOR K7201 ABS	1	
	43-847300-M010	CRANK(1*2) FOR K7300	4	
	43-847300-M011	CRANK(1*2.75) FOR K7300	1	
	43-847300-M012	CRANK(L-TYPE) FOR K7300	1	
	43-847300-M013	CRANK(L-TYPE) FOR K7300	1	
	43-847300-M014	CRANK(1*6.25) FOR K7300	1	
	70-89AA40-M239	K7300 104K BLANK TOP SET	1	
	50-3ZS45-M001	V6 TOP 1*1	69	
	50-MZS45-M001	V6 TOP 2*1(+,S ENTER)	2	
	50-LZS45-M001	V6 TOP 1*2(0INS)	1	
	50-BZS45-M001	V6 TOP 1*1.5(TAB)	1	
	50-CZS45-M001	V6 TOP 1*1.75(CAPS LOCK)	1	
	50-8ZS45-M001	V6 TOP 1*1(BLIND LINE)	3	
	50-RZS45-M001	V6 TOP L-TYPE ENTER	1	
	50-SZS45-M001	V6 TOP 1*2.25 L-SHIFT	1	
	50-GZS45-M001	V6 TOP 1*2.75 R-SHIFT	1	
	50-YZS45-M001	V6 TOP 1*1.25 (CENTER)	7	
	50-ZZS45-M001	V6 TOP 1*6.25 SPACE BAR	1	
	50-DZS45-M001	V6 TOP 2/3*1	16	
	72-846706-M011	PCB'A FOR K6706 U+P	1	
	72-846706-M010	PCB+DICE COB FOR K6706 U+P	1	
	31-16706-M200	PCB 2-SIDE FOR K6706 U+P	1	
	01-78611-M007	IC U+P K/B DICE(MASK) EM78611	1	U1
	20-1003B-M080	RESISTOR	1	R1

11-10424-M066	C/C M0603X104K050TAX	1	C3
11-20034-M066	C/C	2	C4,C5
12-47512-M012	E/C 4.7UF/16V ±20% 4*7MM	3	C1,C2,C6
30-06000-M300	RESONATOR CERAMIC	1	Y1
06-00220-M060	LED 3*5MM P=2.5MM	3	NUM,CAPS,SCR
17-10002-M033	BEAD SMD0805(MLB201209U601)	3	L1,L2,L3
62-84000-M002	Rohs GP label	1	
55-846706-M024	K6706 104-1/106K MEMBRANE	1	
55-846706-M010	K6706 RUBBER SHEET	1	
62-846706-M010	LED PLATE FOR K6706 PET	1	
55-843000-M250	RUBBER STOPPER FOR K3000 BLACK	2	
34-01549-M155	USB CABLE+CORE(6*10*4) 4.0MM	1	
51-846706-M001	LOW-CASE+TILT FOR K6706	1	
51-846706-M00A	LOW-CASE FOR K6706	1	
55-847300-M051	TILT FOR K7300	2	
40-30080-M215-0	SCREW	12	
40-30080-M211-0	SCREW	1	
40-30070-M215-0	SCREW	1	
62-84000-M021	LABEL FOR BARCODE S/N	2	
56-846706-M000	COLOR BOX FOR K6706	1	
61-846706-M000	CARTON FOR K6706	1	
55-84700-M165	K/B PE BAG FOR K7000	1	
62-84080-M090	BLANK BARCODE LABEL	1	
55-84376-M040	BATTEN FOR K376 RUBBER HOLLOW	1	
62-84040-M027	BLANK BARCODE LABEL	1	
62-846706-M030	K6706 USB FCC LABEL 84.6*31.6	1	
63-846706-M001	80Pound PAPER	1	
36-84000-M000	U-P ADAPTOR	1	