
Geniatech Hybrid ATSC X8000A

Quick Install Manual

Introduction

Defining the Geniatech Hybrid ATSC X8000A

Important Notice: "All channels are subject to coverage and may be changed from time to time. Reception may depend on the type and condition of your existing aerial. Aerial upgrade may be required. Please confirm coverage in your area." We strongly recommend that you install an outdoors antenna when you use the DTV receiver indoors.

Note:

- 1. Terrestrial digital wireless broadcast signal may be affected by topography, objects and weather. This would cause a poor signal quality. Therefore, we strongly suggest you to use a rooftop antenna when received indoors.**
- 2. This product is moveable but not be suitable of using in a high speed moving environment. Please check other associated products for these requirements.**
- 3. When you use the function of pre-recording, real time recording, or time shifting, please make sure you have enough hard disk space to save huge recording data.**
- 4. In order to operate properly, please follow the user manual and suggestive setup. Improper operations may cause the system unstable or crash. Before you remove hard disk devices, please check other related application has been closed.**

We reserves the right to add or delete the application and its functions; all new release drivers and application will be mentioned in our website. We are not responsible for fürther notice

Defining X8000A



X8000A is a small board that is plugged into a PCI slot of your computer. It's fully compatible with your desktop PC use. Lets you enjoy digital (FTA) Radio and TV programs and Analog TV programs.

Feature

- Advanced TV Application
 - Supports Digital HDTV for ATSC & Analog TV for NTSC
 - Rewind and fast forward live TV shows with Always Time Shifting recording
 - Electronic Program Guide (EPG, by 3rd party software)
 - Support HDTV Receiving up to 1920 X 1080i
- Listen to ATSC digital radio
 - Receive digital radio stations from your PC
 - Automatic station searching
 - Create favorite stations for convenient listening
- Digital Personal Video Recording
 - Schedule TV recording and save directly to your PC's hard drive

Installing the *Hybrid ATSC X8000A* device

Summary

In this chapter the system requirements and the installation of the Hybrid ATSC X8000A device are described.

System requirements

Recommended OS system (Watching TV and recording)

- . IBM compatible PC with Pentium 4, 2.0GHz or above,
- . At least 256 MB RAM, 512 MB RAM recommended
- . At least 30MB free hard disc space
- . Sound Blaster compatible audio card
- . 3D graphic card recommended (with hardware overlay support, up to date Drivers)

-
- . One free PCI interface
 - . Sound card for audio
 - . Supported operating systems:

Windows 2000 Professional/Server (Service Pack 4 required)

Windows XP Home/Professional (Service Pack 2 required)

Windows XP Professional x64 Edition (upgrade driver later)

- . Additional requirements:

DirectX 9 or higher

MediaPlayer 9 or higher

At least 10GB hard disc space or above, that's necessary for DVR functionality

Additional system requirements for PCI devices

- . 1 available PCI slot for each PCI card (do not use the one directly under AGP graphic card connector).

If you use a multiple number of PCI cards, you have to calculate with a current of 4A on the 5V rail for each of the used Geniatech Hybrid ATSC X8000A PCI card.

Recommended system requirements for HDTV reception

- . Hybrid ATSC X8000A

- . IBM compatible PC with Intel Pentium 4 or AMD Athlon XP CPU with 2400MHz or above

. 3D AGP or PCI express graphic card recommended (with MPEG2 hardware acceleration, hardware overlay support and up to date drivers)

- . Recommended operating systems:

Windows 2000 Professional (Service Pack 4 required)

Windows XP Home/Professional (Service Pack 2 required)

Windows XP Professional x64 Edition will be supported in the future

Important information

For best results, a screen resolution of 800 x 600 pixels with 16 bit color dept or higher is recommended for use with DTV applications. A screen resolution of at least 1280x1024 pixels with 24 bit color dept or higher is recommended for HDTV.

You should update all your system drivers (main board, graphics, sound and network adapter drivers) to the current version before installing the driver for the DTV-PC TV device. You also should update your operating system with all service packs and hot fixes available.

Package contents

X8000A ATSC Hybrid Stick x1

Remote Cable x1

Remote Controller x1

Multi-Function Cable x1

Quick installation Guide x1 (PDF format only)

Software CD (Driver and Application Software)

Installation of the Hybrid ATSC X8000A Device

Installation of the PCI device

To install the *Hybrid ATSC X8000A* PCI board make certain that the computer is turned off. Precede

the following steps to install the PCI card into your PC system:

1. Turn off the PC.
2. Open the case of your computer to expose the PCI slots.
3. Now you have to choose a free PCI slot. If possible choose a different slot than the slot next to your AGP connector.
4. Unscrew the metal dust protector of the slot you have chosen.
5. Put the Hybrid ATSC X8000A board into the PCI slot.

Figure 2.1: Inserting the DTV board into a PCI slot

6. Tighten the screw on the Hybrid ATSC X8000A board.
7. Repeat the steps 3 to 6 for any additional PCI card you want to install.
8. Close the case of your computer case.

Your Hybrid ATSC X8000A hardware is installed now.

Installing the driver and software

Summary

In this chapter the installation of Hybrid ATSC X8000A PCI is exemplary described for the operating system Windows XP Professional Service Pack 2. The installation for the other operating systems as Windows 2000 is similar.

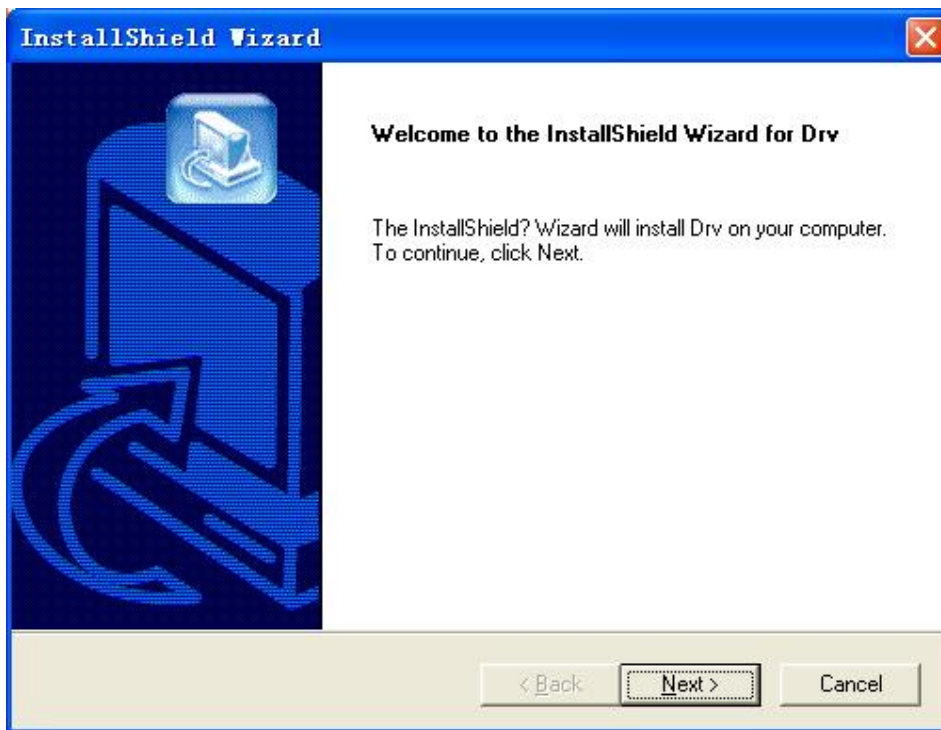
Install the driver

Turn on the PC. Insert the install CD to CD ROM. Then plug the X8000A into one of the PCI port:

1. When you start your computer for the first time after installing the Hybrid ATSC X8000A PCI card, the message “**Found New Hardware**” appears. Please choose “**Cancel**”.



2. Run Driver Install or Driver\setup.exe, Computer will now automatically show an install page, click “**Next**”



3. Choose “**Continue Anyway**” for installing 3 devices in Windows XP

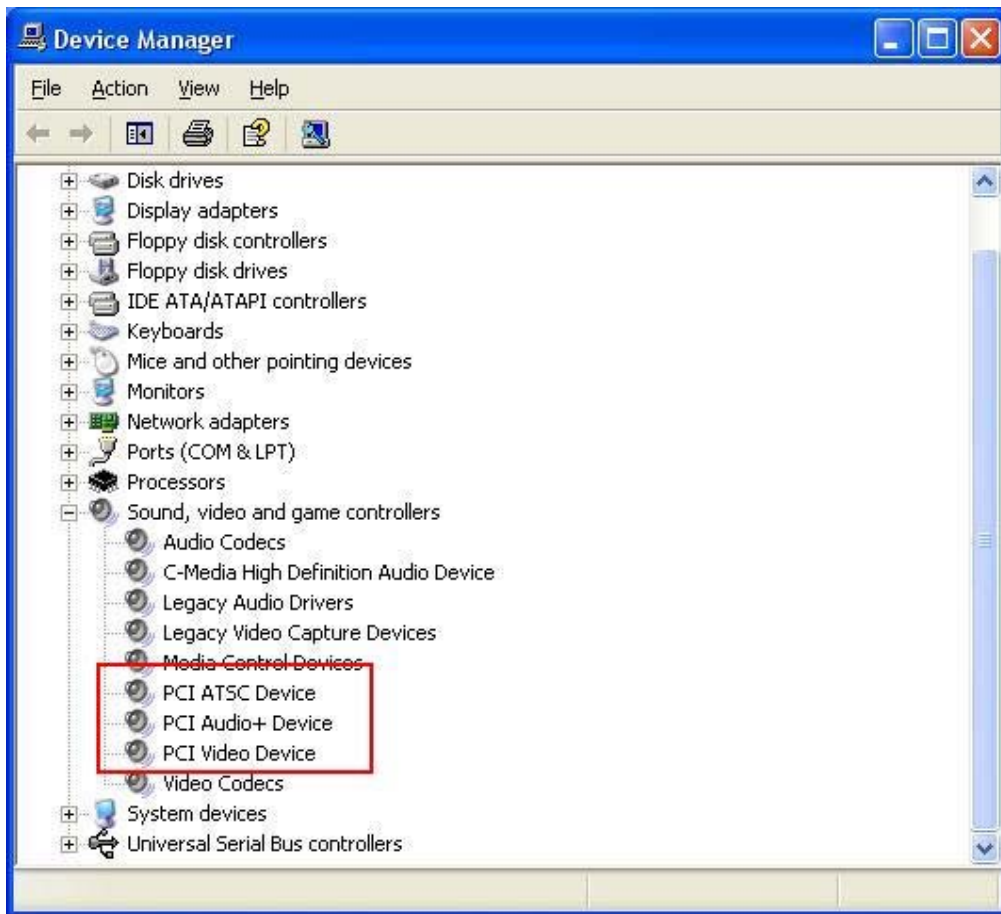




4. When all finished, please check on Control panel, select “**System**”—“**System properties**”—“**Device Manager**”, you can see one device new drivers installed.

X8000A HDTV

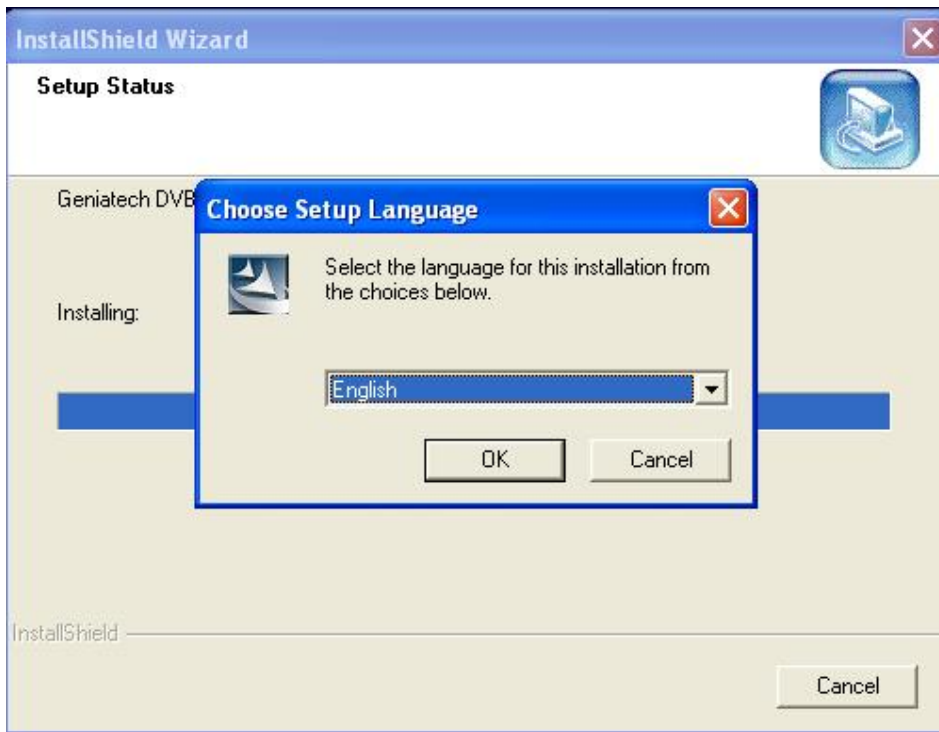
You will see three new device installed.



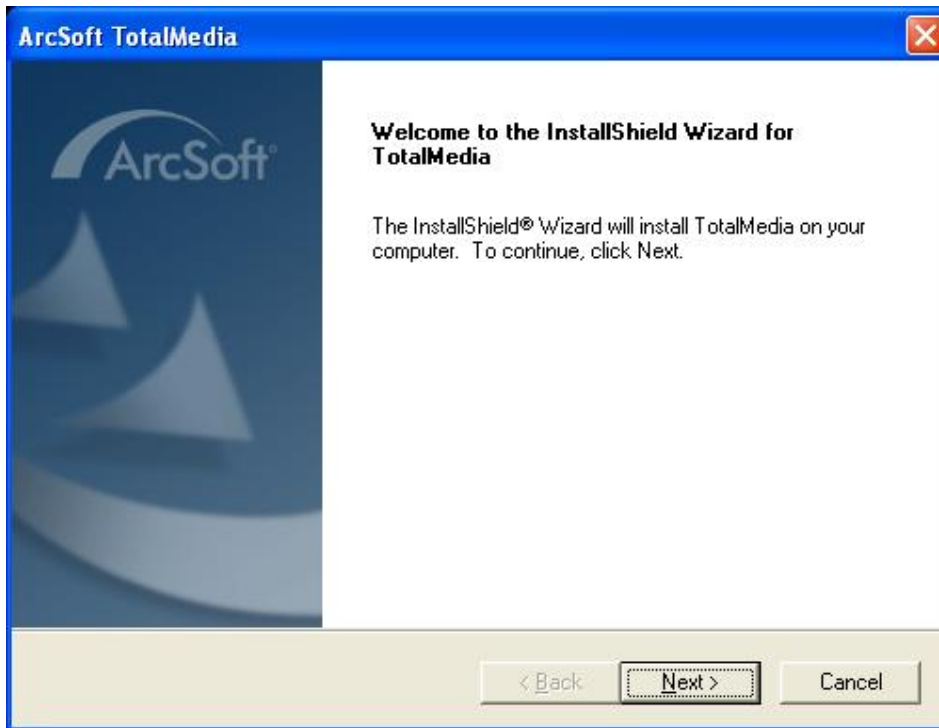
Installation of Software packages

Step1: Run TotalMedia/Setup.exe to install the application software.

Total Media



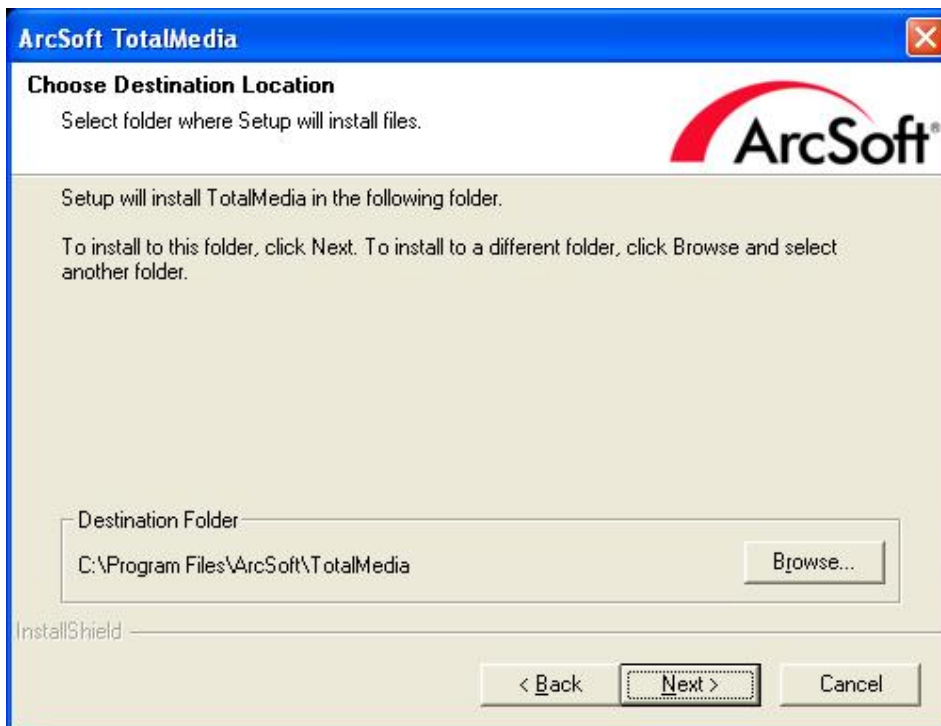
Step2: Installation of Total Media, Choose setup language



Step3: Click “next” to continue installation



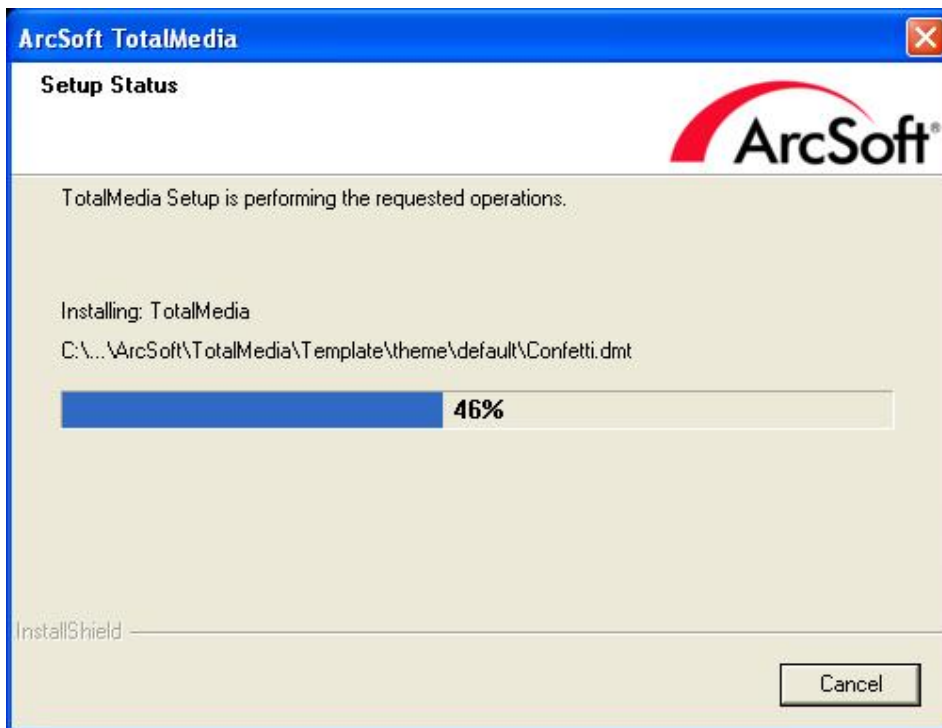
Step4: Click “Yes” after installed of “Arcsoft TotalMedia”



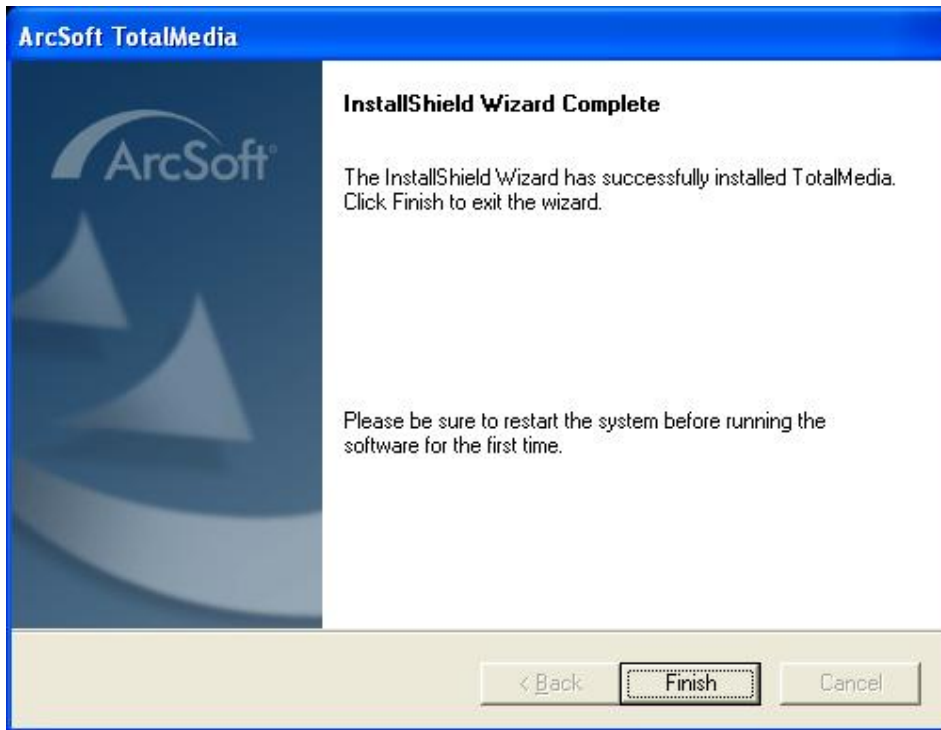
Step5: Choose rote for installation if you want to change the recommended, please click “Browse” and click “next” (Recommended is better)



Step6: Please select a program folder.



Step7: Program starts to copy files.



Step8: Click "Finish" to finish Arcsoft TotalMedia software install.

Arcsoft Total Media Users

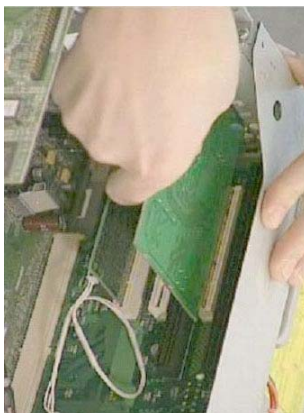
How to use TotalMedia, you can get online help.

Connection

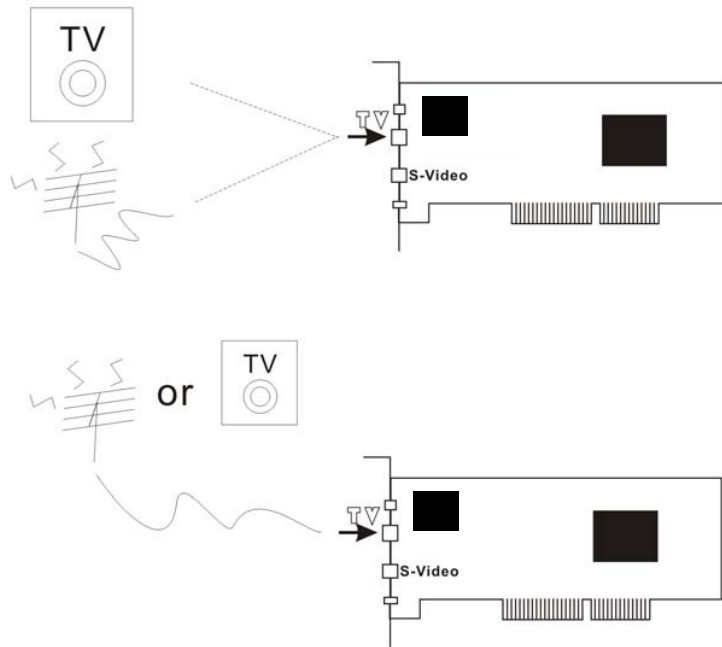
Summary

X8000A Connection (Only ATSC)

1. Connecting **ATSC Hybrid X8000A TV Receiver** to PCI interface on your PC

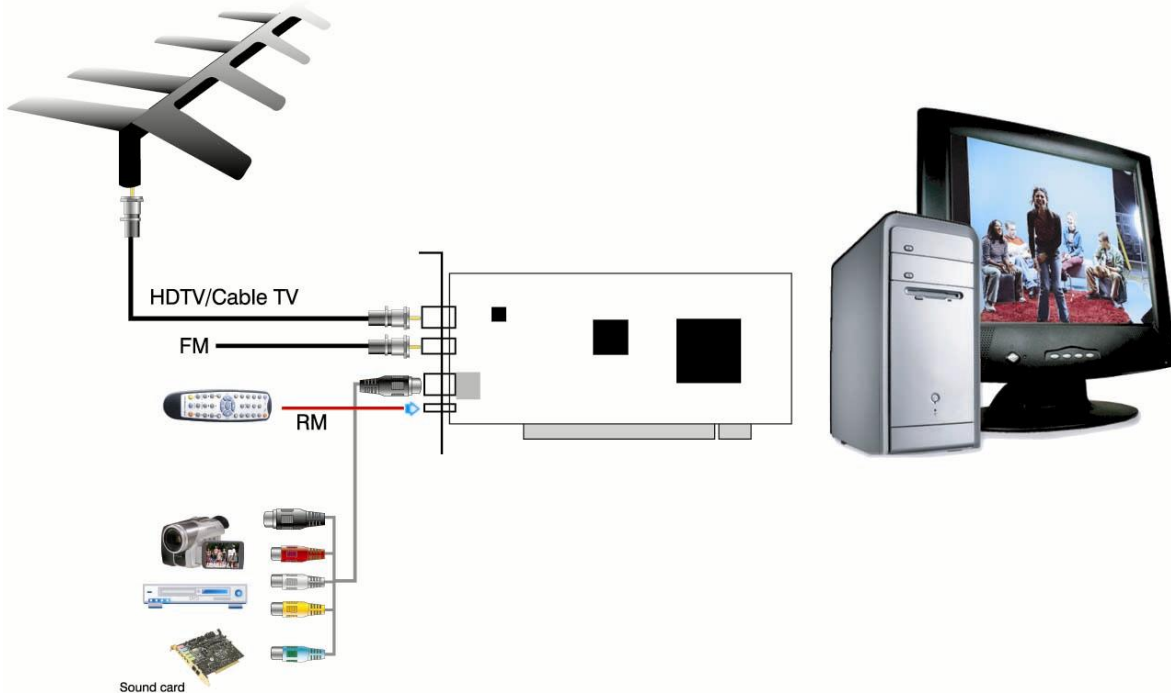


2. Connecting Analog TV Cable (for analog TV) or digital antenna (for digital TV) to **ATSC Hybrid X8000A TV Receiver**.



3. When you want to switch Analog, please switch to Analog Cable (ATSC Antenna can't receive the Analog TV Channel)

4. Input & Output Connections



Remote Controller Button List

	1	TV/AV: Switch between S-Video, Composite, and TV
	2	TotalMedia: Open/Close TotalMedia Software
	3	0 - 9: Channel Number Keys
	4	ESC: Return
	5	MUTE: On/Off volume mute
	6	Up Down Left Right OK
	7,8	CH+/CH-: Channel Up/Channel Down
	9, 10	VOL-/VOL+: Volume Down/Volume Up
	11	Record: Record/Stop recording the current program Play: Play a recorded program Pause: Pause a program Stop: Stops pre-recorded viewing and returns to live TV Forward: Forward the current movie clip Rewind: Rewind the current movie clip Time-Shift: Time-Shift function Snapshot: Takes a picture of what is on screen Show/Hide Control Center: Show/hides the display panel Full Screen/Restore: Switches from full screen to the default screen Shuffle: TV wall function Power: Turns computer off

Trouble shooting

1. Can not lock any program channel when auto scan.

1. Please check if there is ATSC broad casting program in your area;
2. Please check if your signal condition is too weak, try to move the antenna around and re-scan again, it is better to move the antenna near the window
3. Please check you connect the antenna and tightly
4. Please check you select right country in the Total Media software scan function page.

5. Please try to use an outdoor antenna and scan once more.

2. I do find some channels, but this time I get fewer channels than last time

1. Maybe you moved antenna's position or angle, try to find the better position and keep the antenna vertical
2. The weather also can also affect your receiving signal quality, if the weather is bad today, that is the reason
3. In some new start ATSC broadcasting area, the provider of ATSC broadcasting may change their broadcasting power day by day, try to find the best power strength.
4. If you put a CAN of cola on the antenna, that will make signal weak, please move them away.

3. When I watch program, Screen blacked out when playing or freezes on first picture.

Unfortunately, you are in a weak signal condition. You can see that from the Yellow light on the top of U6010A. The reason is same as question 2.

4. Video playing but Audio failed

Please check the sound card or the volume setting.

5. Remote control does not work

1. Check remote controller batteries.
2. Check remote receiver: the light will be on when receive, that is showing it is getting signal.
3. Check if you are in 5m between the Remote Receiver, don't keep to far away.
4. Please point the receive window, that is to say, the angle of the receiving and sending is important

6. Watching TV some time freeze or slow, also audio stroke

1. Please check your PC is not Pentium 3 or 2, X8000A need a high CPU to decoding ATSC stream
2. Please check you VGA driver is properly installed and updated
3. Please don't run other high CPU loading software such as game and CAD.