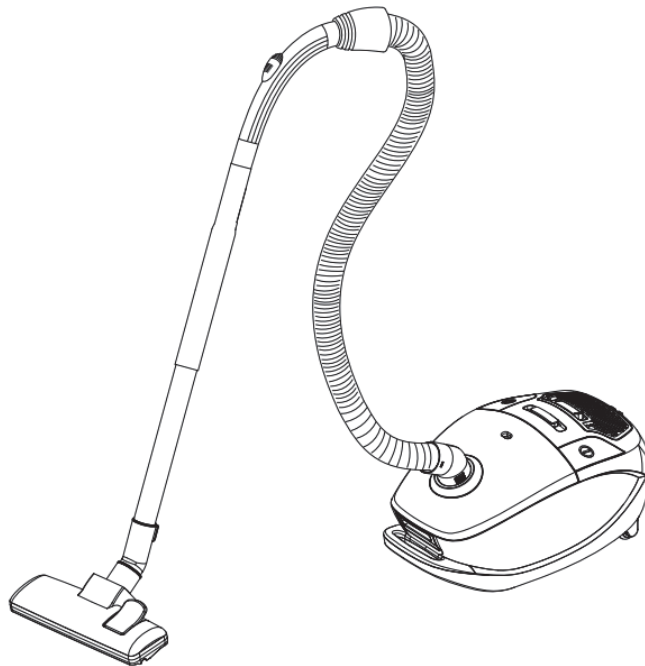




Instruction Manual

SCHMICK 1800 Watt (Max.) Dry Vacuum Cleaner



Model	V-SHMICK
Rated Voltage (V)	220-240 V
Rated Frequency (Hz)	50/60 Hz
Rated Power (W)	1600 Watts (1800W Max.)

- Please read this Instruction Manual carefully before operation and follow all guidelines before using this vacuum cleaner.
- Please keep this Manual for future reference.

TABLE OF CONTENTS

SAFETY INSTRUCTIONS	3
COMPONENTS & BREAKDOWN	4
PREVENTION	5
PREPARING THE VACUUM CLEANER	6
USING THE VACUUM CLEANER	7
CHANGING THE DUST BAG	8
CLEANING THE MOTOR FILTER	8
TRANSPORT & STORAGE	9
CLEANING	9
CONDITIONS OF WARRANTY	10

SAFETY INSTRUCTIONS

When using an electrical appliance, basic precaution should always be followed, including the following:

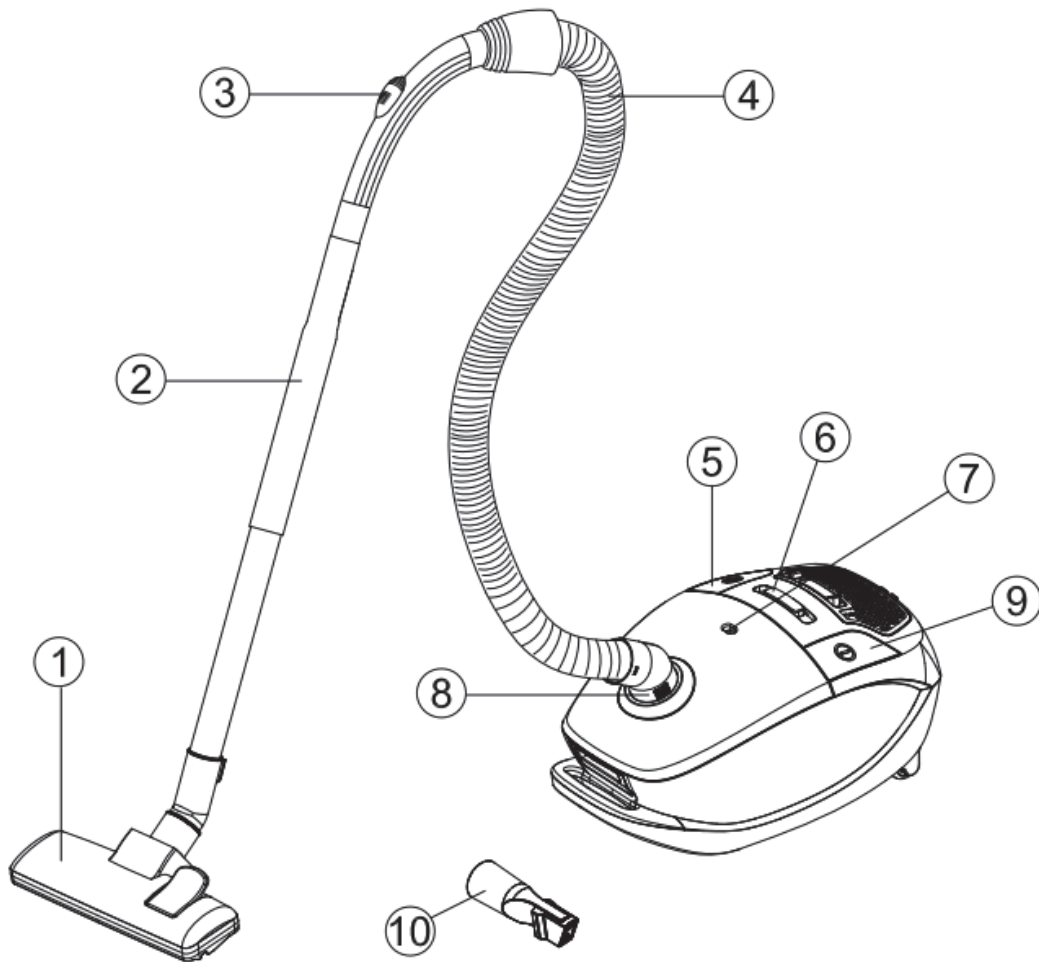
READ ALL INSTRUCTIONS BEFORE USING THIS APPLIANCE

WARNING: To reduce the risk of fire, electric shock, or injury:

1. Do not leave the vacuum cleaner when plugged in. Unplug from the outlet when not in use and before servicing.
2. To reduce the risk of electric shock, do not use outdoors or on wet surfaces.
3. Use only as described in this manual. Use only manufactures recommend attachments.
4. Do not use with damaged cord or plug. If vacuum cleaner is not working as it should, has been dropped, damaged, left outdoors, or dropped into water, take it to a service center.
5. Do not pull on the cord, carry machine by the cord, use cord as a handle, close door on cord, or pull cord around sharp edges or corners. Do not run vacuum cleaner over cord. Keep cord away from heated surfaces.
6. Do not unplug by pulling on cord. To unplug, grasp the plug, not the cord.
7. Do not handle plug or vacuum cleaner with wet hands.
8. Do not put any object into openings. Do not use with any opening blocked. Keep free of dust, lint, hair and anything that may reduce airflow.
9. Keep hair, loose clothing, fingers and all parts of body away from openings and moving parts.
10. Turn all controls off before unplugging.
11. Use extra care when cleaning on stairs.
12. Do not use to pick up flammable or combustible liquids, such as gasoline, or use in areas where they may be present.
13. Hold plug when rewinding onto cord reel. Do not allow plug to whip when rewinding.
14. Unplug before connecting the hose.
15. Do not pick up anything that is burning or smoking, such as cigarettes, matches, or hot ashes.
16. Do not use without dust bag and/or filter in place.
17. If the supply cord is damaged, it must be replaced by the manufacturer or its service agent or a similarly qualified person in order to avoid a hazard.
18. This appliance is not intended for use by persons (including children) with reduced physical, sensory or mental capabilities, or lack of experience and knowledge, unless they have been given supervision or instruction concerning use of the appliance by a person responsible for their safety. Children should be supervised to ensure that they do not play with the appliance.

COMPONENTS & BREAKDOWN

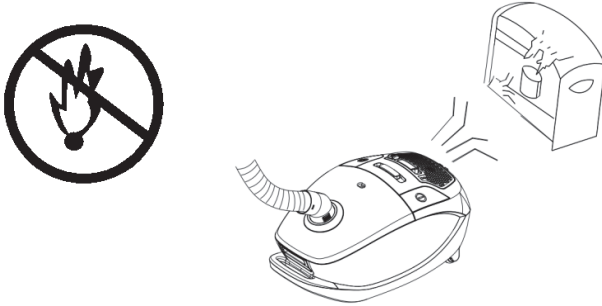
1. Floor Tool
2. Extension Rod
3. Air Slide
4. Suction Hose
5. Cord Rewind Button
6. Suction Control Adjustment
7. Dust Full Indicator
8. Suction Hose Connection
9. ON/OFF button
10. Crevice Nozzle/Brush



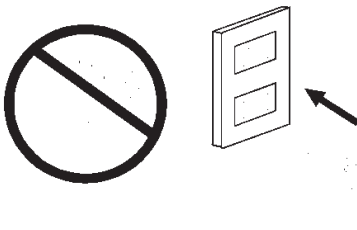
PREVENTION

Switch off the vacuum cleaner immediately if the air intake, the floor tool, the vacuum hose or the telescopic rod becomes blocked. Before starting the vacuum cleaner up again, remove the substance causing the blockage:

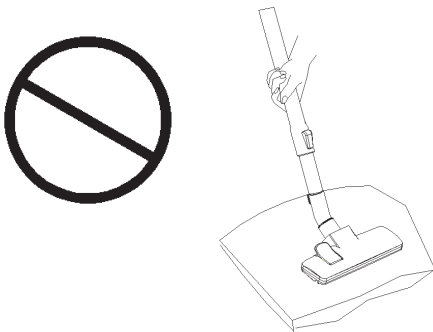
1. Never use the vacuum cleaner in the immediate vicinity of hot bodies and do not suck up hot objects such as cigarette ends or ashes.



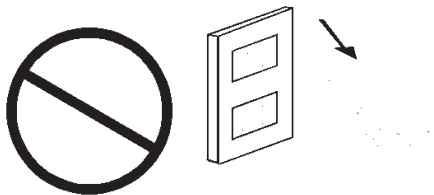
2. Only place the plug in the socket when your hands are dry.



3. Please remove large or sharp objects from the floor before using the vacuum cleaner to avoid any possible damage to it.

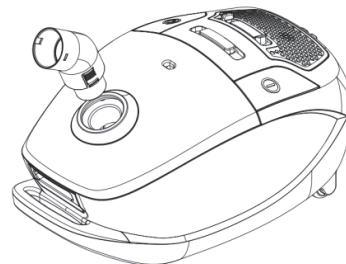


4. Do not pull by the mains cable when pulling out the plug.



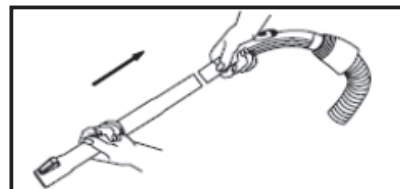
PREPARING THE VACUUM CLEANER

1. Fit the hose on the vacuum cleaner by inserting the rotating hose connection into the vacuum cleaner until you hear a click. To remove the hose, press the button at the side of the hose connection and pull it out.

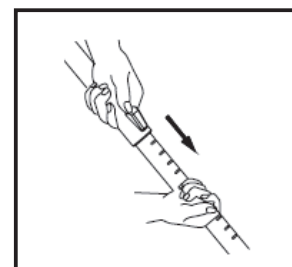


2. Assembling the telescope tube and accessories

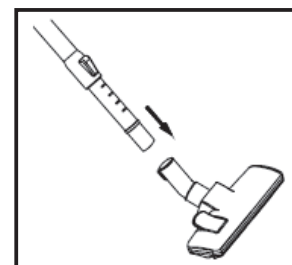
- 2.1. Fit the telescopic tube into the other end of the hose.



- 2.2. Adjust the length of the telescopic tube by pushing the locking mechanism down and pulling in the bottom section of the tube to a suitable length. When parking, shorten the tube as far as possible.

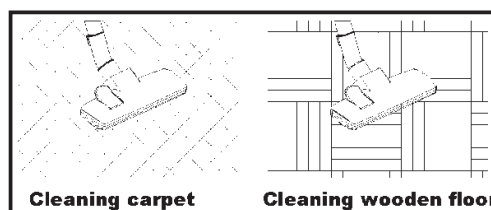


- 2.3. Fit the floor brush into the telescope tube.



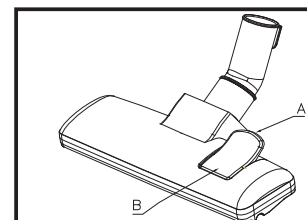
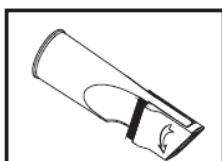
Floor Tool

The floor tool has two settings. When cleaning hard surfaces (parquet flooring, flooring tiles, etc.), the brushes should be extended. When cleaning carpets and mats, the brushes should be retracted into the floor tool. Press the brush change button to switch between the two settings.




Joint Nozzle

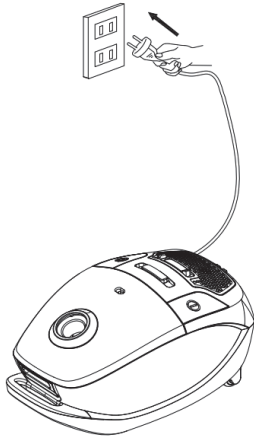
For radiators, corners, skirtings, etc.




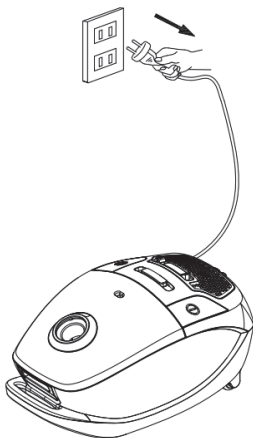
USING THE VACUUM CLEANER

Before using the device first roll out a sufficient length of cable and plug into the mains socket. The yellow mark on the cable is the maximum length that must not be exceeded.

To switch on the device press the foot pedal button  on the casing with your foot



To rewind the power cable, press the button  with one hand and guide the cable with the other hand to ensure that it does not whip causing damage.

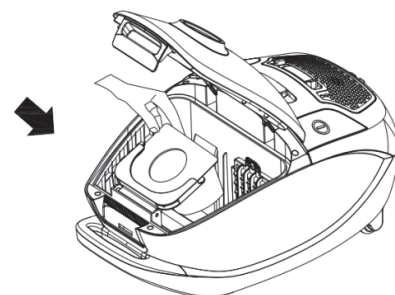
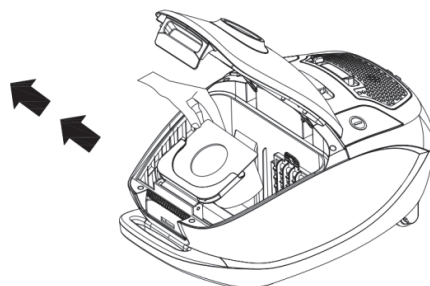


Caution: Never operate the vacuum cleaner without the dust bag or motor filter, otherwise the device can become damaged.

CHANGING THE DUST BAG

If the vacuum's suction is reduced, this may be because the bag needs changing. Raise the floor nozzle off the floor, set the suction force regulation to MAX, switch on vacuum cleaner using the on/off button, and keep an eye on the bag change indicator. If it is red, the bag must be changed.

1. Turn off and unplug cleaner.
2. Remove the hose, open bag cover by pushing latch up with fingers and lifting bag cover.
3. Grasp the millboard at the top of the dust bag and carefully remove the bag from the vacuum cleaner.
4. Throw the bag in the bin. Make sure that there are no holes in it.
5. Insert a new dust bag in the vacuum cleaner. The vacuum cleaner must never be used without a dust bag.
6. Close the vacuum cleaner again.
7. Always replace the bag after sweeping up large quantities of fine material such as fine sand, cement, flour, etc.



Replacement Vacuum Bags

This vacuum cleaner uses the following STARBAG codes:

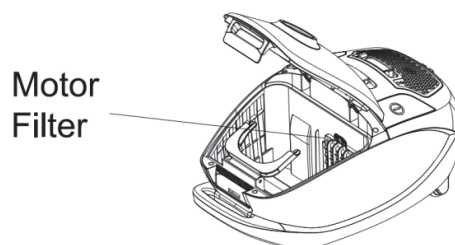


AF938S, AF1025, AF1025S, AF1025C or CB1025

Please contact Cleanstar on (03) 9460 5655 or visit <http://www.starbag.com.au> for your nearest stockist.

CLEANING THE MOTOR FILTER

1. The motor filter can be found in the dust bag container. It protects the motor from dust and should be cleaned at least twice a year, when it is dirty, or if suction force is reduced.
2. Pull the filter holder up out of the vacuum cleaner.
3. Open the filter holder, and remove the filter.
4. Rinse the filter in tepid water, and allow it to dry completely. Do not use a hair dryer or similar to dry the filter.
5. Return the filter to the holder, and replace the filter holder in the vacuum cleaner.



IMPORTANT! Never use the vacuum cleaner without a motor filter.

TRANSPORT & STORAGE

1. You can lift and carry the vacuum cleaner using the carrying handle. Never pull or lift the vacuum cleaner by the cord.
2. Before putting the vacuum away, rewind the cord. Switch off the socket, unplug, and press the cord rewind button until the cord is fully rewound.
3. To save space, the vacuum can be stored upright on its end cover. The telescopic tube can be hung on the vacuum cleaner by inserting the parking fixture into the vertical parking holder.

CLEANING

Clean the vacuum cleaner by wiping it with a damp cloth. You must not use any form of strong, solvent or abrasive cleaning agent



Cleanstar Pty Ltd

ABN: 51 121 002 104 ACN: 121 002 104

59 Radford Road, Reservoir VICTORIA 3073

Phone: (03) 9460 5655 Fax: (03) 9460 5666

Email: sales@cleanstar.com.au Web: www.cleanstar.com.au

CONDITIONS OF WARRANTY

This document outlines the terms and conditions of warranty for your Cleanstar product. This is an important document that should be kept with your proof of purchase documents in a safe place for future reference should you require service for your product.

Thank you for purchasing your new Cleanstar product. We are confident this product will give you trouble-free use and excellent service, provided the operator uses and maintains the product in accordance with the Instruction Manual. Please read the Instruction Manual carefully before using the product for correct operation and maintenance procedures, and store it in a safe place for future reference.

1. This is a parts and labour warranty against faulty or defective parts, materials or workmanship in manufacturing, when the product is used and operated in accordance with the Instruction Manual.
2. This product carries a 12 month (1 year) warranty period that commences from the original date of purchase by the first user/purchaser, and is not transferable.
3. The warranty covers only personal, domestic or household use of the product to remove dry dirt and dust from household carpets, flooring and fabrics.
4. This product is not suitable for commercial or industrial cleaning applications and therefore no warranty applies in this case.
5. This warranty only applies to products purchased and used in Australia.
6. At all times during the warranty period, Cleanstar shall, at its sole discretion, determine whether repair, replacement or refund will apply if the product has a valid warranty claim applicable to it.
7. The repair or replacement of the product under this warranty does not extend the original period of warranty.
8. Please note that this warranty will be voided in the following cases (which are not exhaustive) and the warranty does not apply to the cost of replacing any parts of the product resulting from:
 - Accidental damage;
 - Normal wear and tear;
 - Neglect, misuse or physical abuse by the operator, including failure to properly maintain or service;
 - Any alterations, modifications or tampering with the product without the prior written consent of Cleanstar;
 - Incomplete or improper installation;
 - Incorrect, improper or inappropriate operation;
 - Insect or vermin infestation;
 - Power surges, electrical storm damage or incorrect power supply/voltage;

- Excessive use or use for which this product has not been designed;
 - Vacuuming up water, liquids, toner, powders, glass, hazardous, flammable or corrosive materials, plaster dust, concrete dust and other similar building or construction materials;
 - Failure to comply with the operating instructions contained in the Manual supplied with the product;
 - If the product is rented;
 - If the product is used outside of Australia;
 - If the product was serviced or repaired by anyone other than Cleanstar, or one of Cleanstar's Authorised Service Agents (ASA). Cleanstar is unable to accept any responsibility under this warranty for any repair work not carried out by an ASA or from the use of non-genuine parts.
9. This warranty does not cover service calls, travelling time or consumable parts such as belts, dust bags, filters, hose or hose parts, rods and wands, floor tools and accessories, motor brushes and other like consumable items, unless defective in manufacture. In order to prolong the life of accessories and consumables, regular care and maintenance is recommended.
10. Please retain your original proof of purchase which will be required before you can make a claim under this warranty. If proof of purchase can not be provided at the time of a warranty claim or service, any work carried out on the cleaner is chargeable.
11. Any transportation and delivery costs involved in the repair of defective parts shall be borne by the claimant. In all instances, unless the product is transported by Cleanstar or a Cleanstar authorised representative, the product is transported at the owner's cost and risk while in transit to and from Cleanstar or its ASA.

Our goods come with guarantees that cannot be excluded under the Australian Consumer Law. You are entitled to a replacement or refund for a major failure and for compensation for any other reasonably foreseeable loss or damage. You are also entitled to have the goods repaired or replaced if the goods fail to be of acceptable quality and the failure does not amount to a major failure. The benefits conferred by this warranty are in addition to other rights and remedies under law in respect of the product to which this warranty relates.

TO INQUIRE ABOUT MAKING A CLAIM UNDER THIS WARRANTY, PLEASE FOLLOW THESE STEPS:

- a) carefully check the Instruction Manual and the terms of this warranty;
- b) have the name and model number of the appliance available;
- c) have the proof of purchase available (ie. invoice, receipt, etc) showing where the appliance was purchased from and date of purchase;
- d) call Cleanstar on **(03) 9460 5655** to speak to one of our customer service staff.