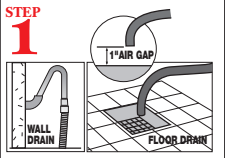
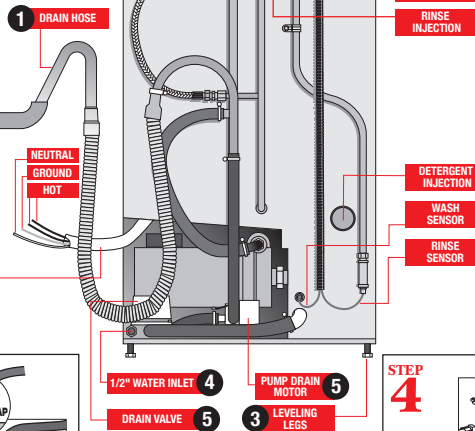


180UC Quick Setup Instructions

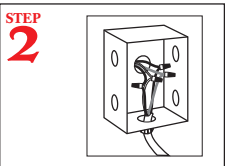


180UC REAR VIEW

WARNING: Electrical and plumbing connections need to be made by a qualified service person who will comply with all available Federal, State and Local Health, Electrical, Plumbing and Safety codes.



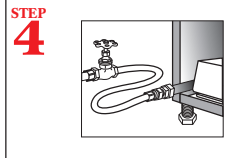
Connect the drain hose to wall or floor drain. The floor drain must have a 1 inch air gap between drain hose and floor drain.



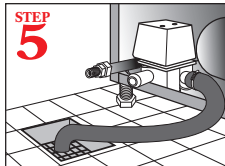
Connect hard wire power supply from dishwasher to power box. (Two hot wires, one neutral and one ground.)



Level dishwasher by adjusting leveling legs. Dishwasher must be level front and back.



Connect dishwasher to hot water source, minimum temperature 140°. If 140° is not available, order a 3 minute timer cycle (120° minimum temperature required).



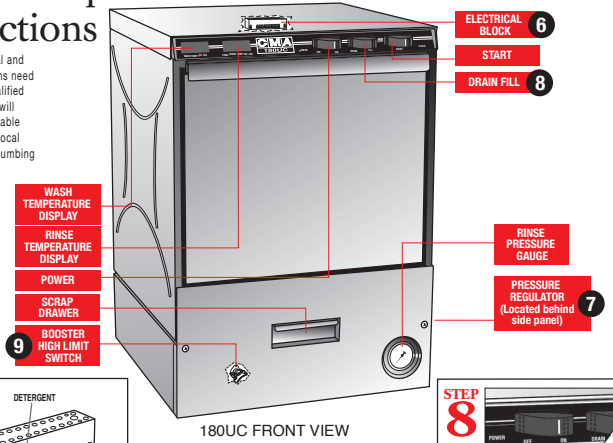
When ever possible, **remove pump drain** if a floor drain is available near by. Remove drain pipe and place drain hose on the drain valve and allow machine to gravity drain.

3-2007

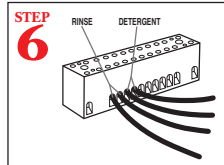
180UC Quick Setup Instructions



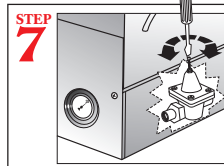
WARNING: Electrical and plumbing connections need to be made by a qualified service person who will comply with all available Federal, State and Local Health, Electrical, Plumbing and Safety codes.



180UC FRONT VIEW



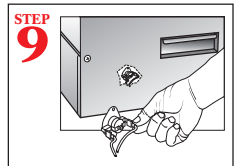
Chemical dispenser electrical hook-up is located inside control box. Chemical dispenser is optional. It is not sold with dishwasher.



Adjust pressure regulator located behind side panel, to 20 psi (maximum).



Turn power switch to "ON" position. Hold down "FILL" switch until water overflows into the scrap drawer.



After filling dishwasher for the first time, **(CAUTION: turn power supply off)** reconnect the factory unplugged wire to booster high-limit switch located behind front panel.

3-2007