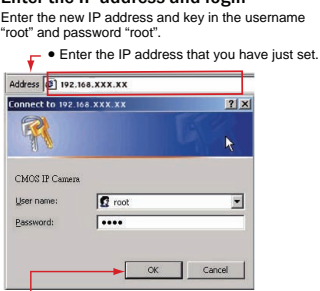


## Step4 Enter the Main Page

- 1 Start**  
Open a new Internet Explorer window.
- 2 Enter the IP address and login**  
Enter the new IP address and key in the username "root" and password "root".
- 3 Enter the control screen**  
You can enter the control screen when the username and password are confirmed.



- Enter the IP address that you have just set.
- When the login screen appears, key in root in the User Name and Password fields. Click OK.

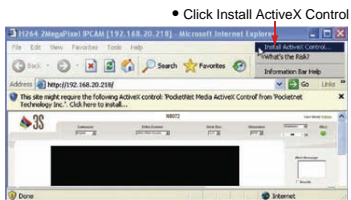


## Quick Guide

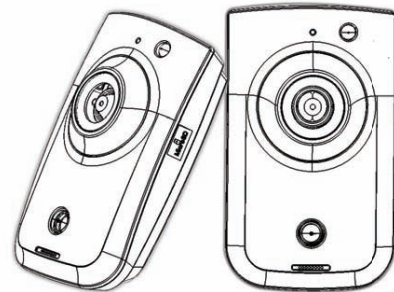
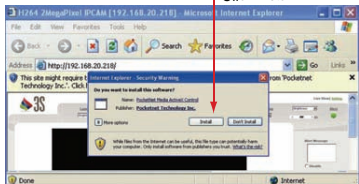
N8072 Cube Network Camera

## Step5 Install Internet Explorer Active X Controller

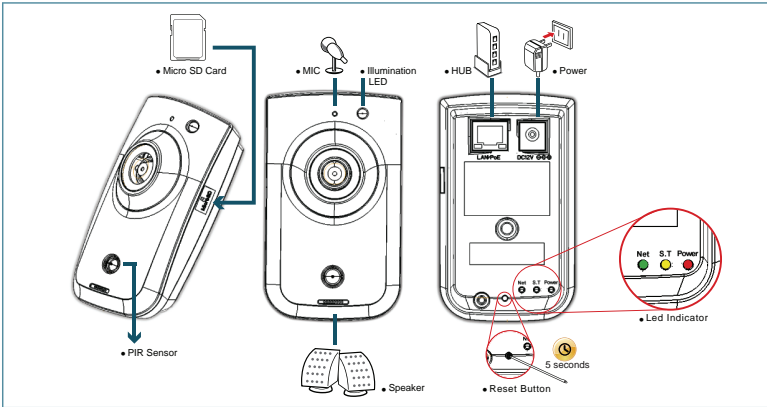
- 1 Install ActiveX**  
When the username and password are confirmed, a control setup screen pops up under the IE address bar. Click "Install ActiveX Control" to install the controls.
- 2 The security warning screen appears. Click Install.**  
The ActiveX Control is named ActiveX Control. This software is well certified. You can use it without any doubts on its validity.
- 3 Camera operation and interface**  
When ActiveX Control is installed successfully, you can see the camera image and interface.



- Click Install ActiveX Control
- Click Install



## Connection diagram



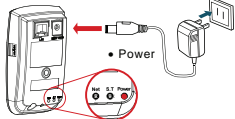
## Step 1 Connect the product to the switch hub and PC.

### 1 Prepare the product, your PC and switch hub ready for connection.

Prepare the product, your PC and switch hub ready for connection. Make sure that your PC has a LAN port available for connection to the network cable of the product.

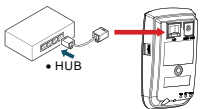
### 2 Connect the product to the power source (as shown in the figure).

Connect the product with your power adaptor directly. The Power Led Indicator will light when the power is on.



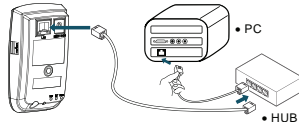
### 3 Connect the product to the switch hub (as shown in the figure).

Use a network cable and plug it in the LAN port of the product. Plug the other end of the cable in the LAN port of the hub.



### 4 Connect the switch hub to your PC (as shown in the figure).

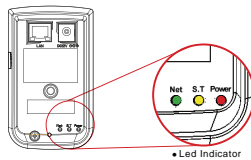
Prepare the product, your PC and switch hub ready for connection. Make sure that your PC has a LAN port available for connection to the network cable of the product.



### 5 Turn on the power.

Turn on the power of the PC and hub. After you have finished install the product. \* Please check if it is ready to use by the Led indicator as below:

**NET** It will light in green when the network is connected.  
**STATUS** It will light in yellow when any event triggered.  
**POWER** It will light in red when the power is on.



## Step 2 Camera settings

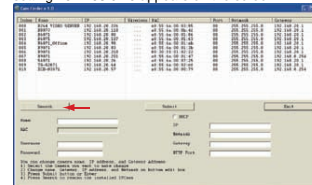
### 1 Start

Execute the **Cam Finder.exe** file from the supplied CD.



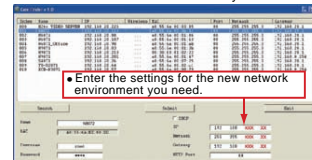
### 2 Find the camera (Search)

Search for the product from your LAN. The default IP setting **192.168.0.20** appears on the screen.



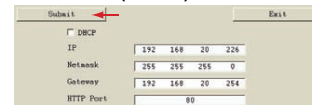
### 3 Changing the IP address and related settings for the network environment

When you find the camera, click it and the settings appear on the right side. You can change the settings for the new network environment as you need.



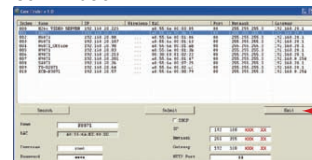
\* You have to enter a new settings in the IP Netmask and Gateway fields and keep the settings in other fields unchanged.

### 4 Submit data (Submit)



\* Click **Submit** to apply the new settings.

### 5 Confirmation



\* Click **Exit** to quit, after all changes have been confirmed.

Note:  
If this software cannot run successfully, check that it is not blocked by an anti-virus software or firewall.

## Step 3 Change the Internet Explorer settings

### 1 Start

Bring Up Your IE browser.

### 2 Check

Make sure that Level II, the commonly used default security level, is set for the security.

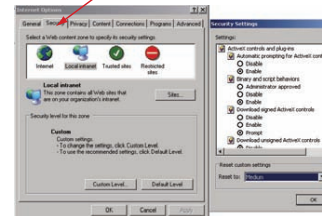
#### Steps

Open the IE browser  
 ↓  
 Tools  
 ↓  
 Internet Options  
 ↓  
 Security  
 ↓  
 Custom Level

### 3 Select "medium" for security

Make sure that Level II, the commonly used default security level, is set for the security.

\* Check that the security level is Level II.



Note: This product supports IE 6.0 or above.

### 4 OK

Click **OK** to quit.

## Attention

- Please refer to user manual for more detailed explanation of the hardware installation.
- Where no switch hub is available, you can search and set up the camera using the network peering approach. However, you may need a jumper and need to change the LAN configuration on your PC for this purpose. It is recommended to request a qualified engineer for the connection or execute the network peering referring to the user's manual.