

3SIXT



STUDIO TRUE WIRELESS EARBUDS

with Wireless Technology

3S-0954

USER GUIDE

IMPORTANT SAFETY INFORMATION

Read the following recommendations before using the 3SIXT Studio True Wireless Earbuds:

- Before recharging 3SIXT Studio True Wireless Earbuds through a wall outlet, make sure wall charger outlet voltage is 5V 1A;
- Make sure to use the Micro USB Charge Cable that came with this product, other cables may damage your Studio True Wireless Earbuds;
- Do not drop, knock, disassemble or attempt to repair 3SIXT Studio True Wireless Earbuds. Do not immerse or put 3SIXT Studio True Wireless Earbuds in water. Store 3SIXT Studio True Wireless Earbuds in a dry place;
- Do not expose 3SIXT Studio True Wireless Earbuds to excessive heat including direct sunlight and fire;
- Do not use 3SIXT Studio True Wireless Earbuds near explosive gases or flammable materials;
- Do not burn or incinerate 3SIXT Studio True Wireless Earbuds;
- Do not expose 3SIXT Studio True Wireless Earbuds to harsh chemicals;
- Keep 3SIXT Studio True Wireless Earbuds away from young children;
- Putting anything in 3SIXT Studio True Wireless Earbuds input or storage ports other than the supplied Micro USB Charge Cable or your device's charging cable will cause damage or short out 3SIXT Studio True Wireless Earbuds;
- To extend 3SIXT Studio True Wireless Earbuds charging life, do a complete recharge of the Earbuds every four months;

PLEASE NOTE: 3SIXT Studio True Wireless Earbuds are only SPLASH RESISTANT. They have a level 4 water ingress rating that means they can sustain exposure to light rain and sweat.

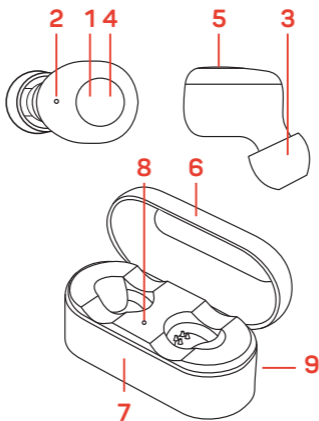
Welcome

This User Guide will give you the information on how to enjoy your 3SIXT Studio True Wireless Earbuds.



For more information and support,
visit www.3sixtgear.com

GETTING TO KNOW YOUR 3SIXT STUDIO TRUE WIRELESS EARBUDS



Buttons, Ports & Lights

1- MF Button

2- Microphone

3- Silicone Gel Ear Buds

4- Indicator Light

5- MF Button Right

6- Charging Case

7- Internal Battery

8- Charge Indicator

9- Micro USB Port 5V 1.0A

ACCESSORIES

- 1) Studio True Wireless Earbuds
- 2) Micro USB Charge Cable
- 3) Charging Case
- 4) User Guide

HIGHLIGHTS

3SIXT Studio True Wireless Earbuds can be connected to Bluetooth® devices such as smart phones, tablets and computers to playback your favorite music via streaming services or through your own music library. 3SIXT has utilised the latest in True Wireless Technology that allows you to “cut the cord” forever. 3SIXT Studio True Wireless Earbuds can sustain up to 3 hours of continuous music playback. When in need of a recharge, the handy charging case has 500mAh power bank built in for a quick power up to get you going again.

EARPHONES WIRELESS CONNECTION

Connecting the Earbuds to each other

As soon as you take out the Earbuds from the charging case quickly insert both earbuds into your ears. Both earbuds will automatically turn on and you will hear the voice prompt “Power On”. In a few seconds, the Earbuds will auto pair with each other and you will hear the voice prompt “Connected, Left Channel Right Channel.” The left earbud will flash blue and white and the right earbud will flash white every 7 seconds until the first time pairing is successful.

Connecting both earbuds for the first time will take around 15-20 seconds.

This process has only connected the Earbuds together, The next step is to pair the Earbuds to your device.

PAIRING TO MOBILE PHONES/TABLETS/COMPUTERS

After the Earbuds are connected to each other, you will hear the voice prompt "Pairing," this means that the Earbuds are in pairing mode, and are discoverable as a Bluetooth® device.

Activating Bluetooth® on your device:

- 1) Go to your device Bluetooth® settings and scan for new Bluetooth® devices;
- 2) Search for 3SIXT 3S-0954 and once found, click on it to pair with 3SIXT Studio True Wireless Earbuds;
- 3) If your device asks for a pairing code, please enter '0000' and confirm it;
- 4) You will hear the voice prompt "Second device connected" this indicates both earbuds successfully connected to your device and are ready to go.

LOW POWER WARNING

3SIXT Studio True Wireless Earbuds will make a voice prompt to remind you to charge if the battery is low (battery <10%). You will need to charge the Earbuds regularly to maintain a full charge.

CHARGING THE EARBUDS

The charging case has built in 500mAh battery. When the Earbuds power is low insert them into the charging case to recharge them.

The Blue LED light on the case (8) will illuminate:

Solid blue light: 100%, Three blue flashes: 75% Two blue flashes: 50%, One blue flash: 25% (or below).

CHARGING THE CASE

Connect the Micro USB Charge Cable to a USB 5V 1A charger to recharge the Earbuds charge case internal battery via the Micro USB port (9). When the Earbuds are removed from the case the Blue LED light will blink once to indicate the Charge Case battery is low. In normal conditions you can expect about 5 full Earbuds charges from a fully charged case.

TECHNICAL SPECIFICATIONS

Power input	Micro USB 5V 1.0A
Ingress Rating	IPX4 Splash Proof
Battery	Lithium Ion 3.7v/100mAh (Each Earbud 50mAh)
Wireless Protocol	BT v4.2
Distance	Up to 10m
Input	5V 1A
Audio Output	5mW
Unit	10 mm x 2
Playback Time	2-3 hours
Recharge Time	1-2 hours
Dimensions	74 x 32 x 32mm
Weight	148.6g
Frequency Range	20Hz-20KHz
DistortionTHD	~1%
Working Temperature	Temperature: -10°C - 55°C / Humidity: 0% -85%
Storage Temperature	Temperature: -20°C - 60° C / Humidity: 0% -90%

GENERAL OPERATION

Powering On/OFF	Remove the Earbuds from the charging case to turn on Place the Earbuds back into the charging case to turn off
Answering & Ending a call	During an incoming call, short press the left MF (1) to answer the call. Use your device screen/keypad to end the call.
Refusing a call	Short press the left MF (1) key twice to reject the call.
Redial last number	Short press the left MF (1) to redial
Play/Pause	Short press the left/right MF (1/5) key to play/pause
Volume - or +	Volume is controlled from your device directly
Next/Previous	Short press the left/right MF (1/5) twice to go to the next track. Short press the left/right MF (1/5) x 3 to go to the previous track.
Disconnect wireless connection	Long press left/right 'MF' (1&5) for 4 seconds to power off. Voice Prompt "Power Off" Only need to press one

LED STATUS

Connecting Status

Left Ear Blue/White LED (4) flashing	Connecting mode
Left Ear White LED (4) light Steady	Connected

Pairing Status

Left Ear Blue LED (4) flashing	Pairing mode
Left Ear White LED (4) light Steady	Paired

Earbuds Charging Status

Blue light (8) rapid flashing on the charging case when the Earbuds are inserted

Blue light flashing	20%
---------------------	-----

Blue light rapid flashing x 2	50%
-------------------------------	-----

Blue light rapid flashing x 3	75%
-------------------------------	-----

Blue Light Steady	100%
-------------------	------

Charging Case Status

Blue light (8) illuminates when the Earbuds are removed from the case

Blue light flashing	Charge required
---------------------	-----------------

COMFORT & FIT

3SIXT Studio True Wireless Earbuds come with three sizes (Small, Medium, Large) of Silicone Gel Ear buds (6). Please take time to try all three sizes and test them for in ear comfort and sound isolation. Ensuring a good fit dramatically increases the sound quality & performance of your Earbuds

Please Note: We do our best to reflect accurate specifications, however periodic updates and changes may occur after this manual was printed. We reserve the right to change the parameters without prior notification.

TROUBLE SHOOTING

- 1. My 3SIXT Studio True Wireless Earbuds went flat and now they won't auto connect**
 - a) You will need to commence the pairing process again
 - b) Fully charge 3SIXT Studio True Wireless Earbuds to 100%
 - c) In your device Bluetooth settings "Forget Device" 3SIXT3S-0954
 - d) Commence the Connection & Paring process again
- 2. My device can't find any new Bluetooth® devices**
 - a) Make sure 3SIXT Studio True Wireless Earbuds have entered pairing mode.
 - b) Ensure 3SIXT Studio True Wireless Earbuds are within the effective working range (10m)
- 3. Bluetooth® devices cannot pair**
 - a) Make sure your device allows new Bluetooth® connections.
 - b) Make sure the pairing password entered is '0000'. If you are using a Bluetooth® transmitter device, please ensure the responding password of your Bluetooth transmitter supports the '0000' code.
- 4. My 3SIXT Studio True Wireless Earbuds do not play music or answer calls when they are connected to a Bluetooth® device**
 - a) Make sure your Bluetooth® device supports A2DP and HSF profile.
 - b) Ensure your Bluetooth® enabled device is within the effective working range.
- 5. When paired with my computer, Windows asks for a new driver. Can you supply?**

Sorry, we do not supply drivers. Please visit your PC manufacturer's website for the latest driver updates.
- 6. Are 3SIXT Studio True Wireless Earbuds waterproof?**

No, 3SIXT Studio True Wireless Earbuds are only splash resistant. They have a level 4 water ingress rating that means they can sustain exposure to light rain.

AUSTRALIA & NEW ZEALAND TWO YEAR WARRANTY

3SIXT will replace the faulty product at no cost to the consumer. The warranty does not extend to any consequential damages or costs that may be incurred and is valid for TWO YEARS from date of purchase. The consumer must return the faulty product to the retail store it was purchased from together with proof of purchase. The benefits to the consumer under this warranty are in addition to other rights and remedies of the consumer under Australian and New Zealand laws in relation to the goods to which the warranty relates. Our goods come with guarantees that cannot be excluded under the Australian Consumer Law. You are entitled to a replacement or refund for major failure and for compensation for any other reasonably foreseeable loss or damage. You are also entitled to have the goods repaired or replaced if the goods fail to be of acceptable quality and the failure does not amount to a major failure.

The warranty is provided by:

Australia: Cellnet Group Limited

59-61 Qantas Dr, Eagle Farm, QLD 4009

Phone: 1300 CELLNET (1300 235 563)

Email: info@cellnet.com.au

New Zealand: Cellnet Limited

10a Orbit Dr, Rosedale, Auckland 0632

Phone: 0800 CELLNET (0800 235 563)

Email: info@cellnet.co.nz

EN

3SIXT PRODUCT SUPPORT

For more information, visit www.3sixtgear.com/support

DE

3SIXT PRODUKT-SUPPORT

Bitte besuchen Sie www.3sixtgear.com/support

FR

ASSISTANCE PRODUIT 3SIXT

Veuillez consulter www.3sixtgear.com/support

ES

ASISTENCIA TÉCNICA DEL PRODUCTO 3SIXT

Visite www.3sixtgear.com/support

IT

ASSISTENZA TECNICA 3SIXT

Si prega di visitare www.3sixtgear.com/support

3SIXT

Copyright © 2017.

3SIXT and its logo are trademarks of Cellnet Group Limited
in Australia & New Zealand. All Rights Reserved.

The Bluetooth® word mark is a registered trademark owned by Bluetooth SIG, Inc.

CELLNET GROUP LIMITED

59-61 Qantas Drive, Eagle Farm, QLD 4009 Australia.

MADE IN CHINA.

3SIXTgear.com

3S-0954



For more information, visit
www.3sixtgear.com
or visit www.3sixtgear.com/support



3SIXTgear