



Ultimate Survival Technologies
Jacksonville, FL 32256
(904) 786-0033
www.ultimatesurvival.com

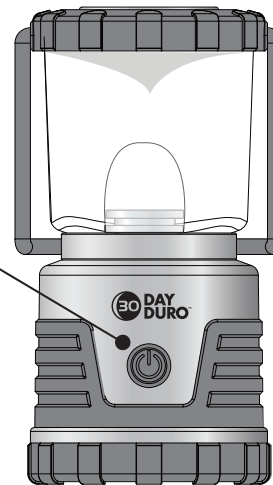
30-Day Duro LED Lantern - Owner's Guide

General Operating Instructions

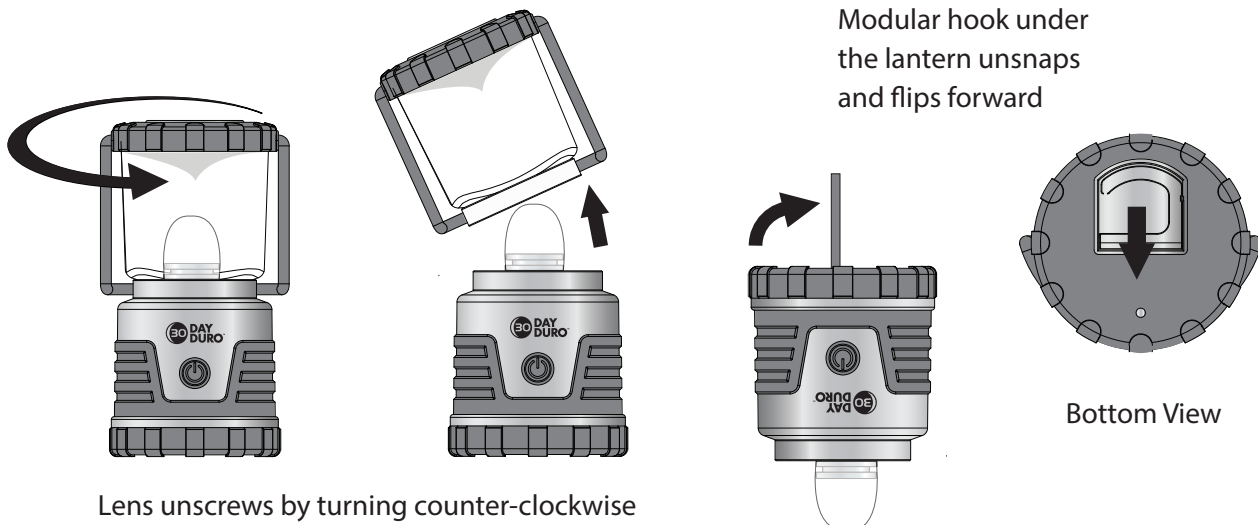
HIGH, MEDIUM & LOW MODES: Install batteries (see instructions on reverse side). Press power button once for HIGH MODE, twice for MEDIUM MODE, 3 times for LOW MODE and 4 times for OFF.

FLASHING SOS: Press and hold power button for a few seconds until SOS flash begins. This can be done in any mode. Press power button once to reset (this will turn the lantern off).

The power button changes lighting modes as well as powering the lantern on and off

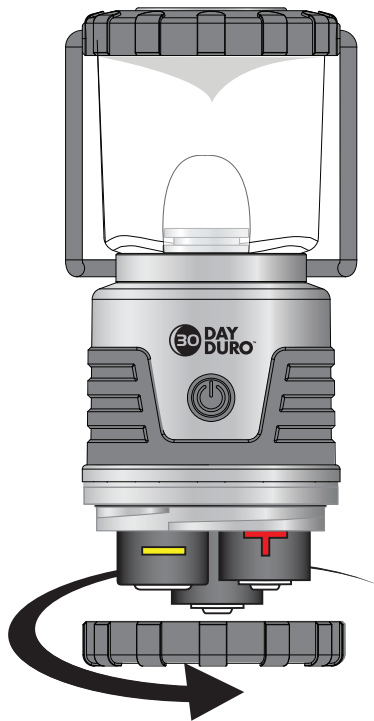


TO CONVERT TO A DOWNLIGHT: Unscrew lens and place aside. Unlatch hook underneath the lantern. Turn the lantern upside down and hang securely.



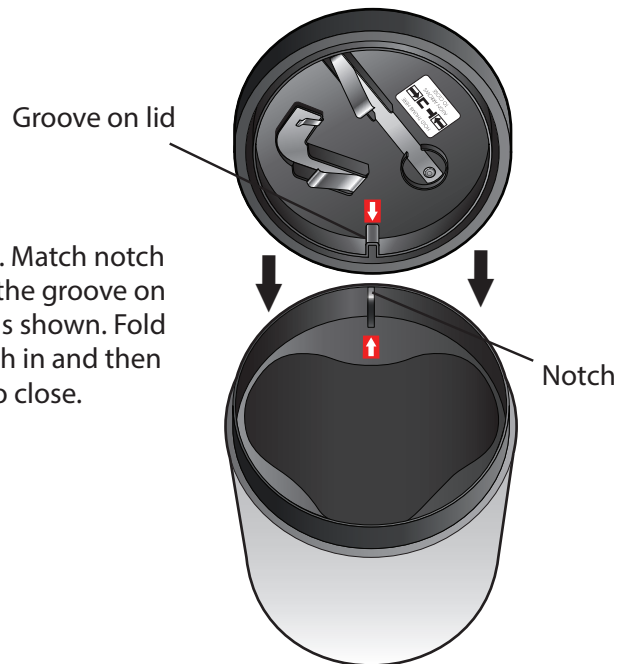
Battery Changing Instructions

Switch off lantern. Turn base counter clockwise (unscrew) to remove old batteries and properly dispose. Replace with 3 new 1.5V D cell batteries in correct polarity following + and - symbols in the battery compartment. Line-up arrows and notches inside unit, then push down while screwing the base to the body (see diagram). Make sure that the base is tight in order ensure water resistance. Remove batteries when not in use for a long period of time. Do not mix old and new batteries -- or rechargeable, standard and alkaline types.



Turn base counter-clockwise to remove

Align red arrows. Match notch on unit body to the groove on the base cover, as shown. Fold cover down, push in and then turn clockwise to close.



WARNING:

Do not look directly into the LED light for more than a few seconds.

Do NOT allow children to use LED light unless under the supervision of an adult. Remove the batteries if not using the LED light for over 30 days or before storage.