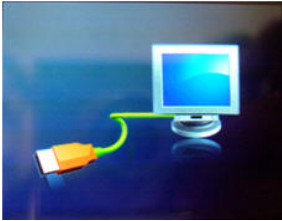

Index**Contents:**

Introduction.....	2-4
1.1 For first time use.....	2
1.2 Introduction.....	3
1.3 Product overview.....	4
Basic Operation.....	5-6
Music/Video/FM/Photo modes.....	7-9
Text /Record/Explorer/Setting modes.....	9-12
Setting.....	10-12
Use MicroSD/T-flash card.....	12-13
Convert video file.....	13-15

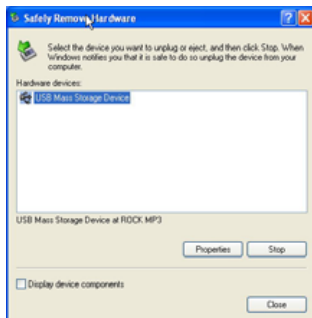
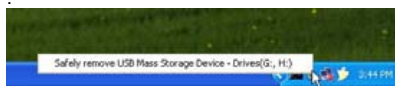
For first time use

●Charge the Li-polymer battery

Turn on your PC and connect the MP-300 USB port with the provided USB cable. When connecting to the PC, the display will show the following photo. At this stage, you can only transfer data from the PC to this player and it will take 5 hrs to fully charge the battery.



In order to 100% charge the battery within 3~4 hours, remove the USB Mass Storage Device (don't unplug the USB cable).



After you are under “Safely remove the USB Mass Storage Device” mode, a battery-detector photo appears. If it is Red or Yellow, it means the player is “under Charging”. “Green” color means “100% charge successfully”. At this status, you can press any key to access the main menu and operate all the functions but it will take longer time to 100% charge it.

Warranty NOTES:

We only provide six-month limited free warranty for the Li-polymer battery.

For your safety

- Use your player properly to prevent explosion, fire, electric shock, etc.
 1. Do not leave the player in a place subject to moisture or temperature higher than 35°C or lower than 5°C.
 2. Do not repair the player by yourself, or it will cause damage.
 3. Do not get the player wet and avoid any water.
 4. Backup important data to your PC as repair or other causes may result in data loss.
- When using your player, pay attention to your health, especially your hearing.
 1. Do not use the earphones while driving or riding a bicycle.
 2. You may cause a traffic accident if you turn up the volume of the earphones while walking down the street.
 3. Do not turn up the volume too high, as doctors warn against prolonged exposure to high volume.
 4. Stop using the device or turn down the volume if you have ringing in your ears.
 5. Always use the accessories provided by or approved by our company, and do not spray water on the player.

Introduction

Features Overview

Congratulations on your purchase of the new MP-300, MP4 player.

The player supports MP3 and WMA music file formats.

- ◆ Built-in 2.4" 262K true color TFT display
- ◆ Internal FM stereo radio and direct recording
- ◆ Built-in microphone and stereo speaker
- ◆ Supports e-book (.txt)
- ◆ Digital voice recording in WAV file.
- ◆ Storage media: on-board up to 4GB flash memory
- ◆ File support: MP3, WMA, WAV, AVI (Xvid) and JPEG
- ◆ Lyric synchronization and ID3 tag
- ◆ USB 2.0 High speed drive
- ◆ 7 EQ: Normal, 3D, Rock, Pop, Classic, Bass and User EQ
- ◆ Multi-play mode: Once, Repeat One, Folder Once, Folder Repeat, All Once, All Repeat, Intro
- ◆ Rechargeable Li-polymer battery
- ◆ Supports Micro SD Card for memory expansion
- ◆ Support OS system:
 - Used as USB drive: Windows Vista/2K/XP; Mac OS 10.3 or above, Linux 2.4.2
 - Video converter software: Windows Vista/2K/XP

Package contents

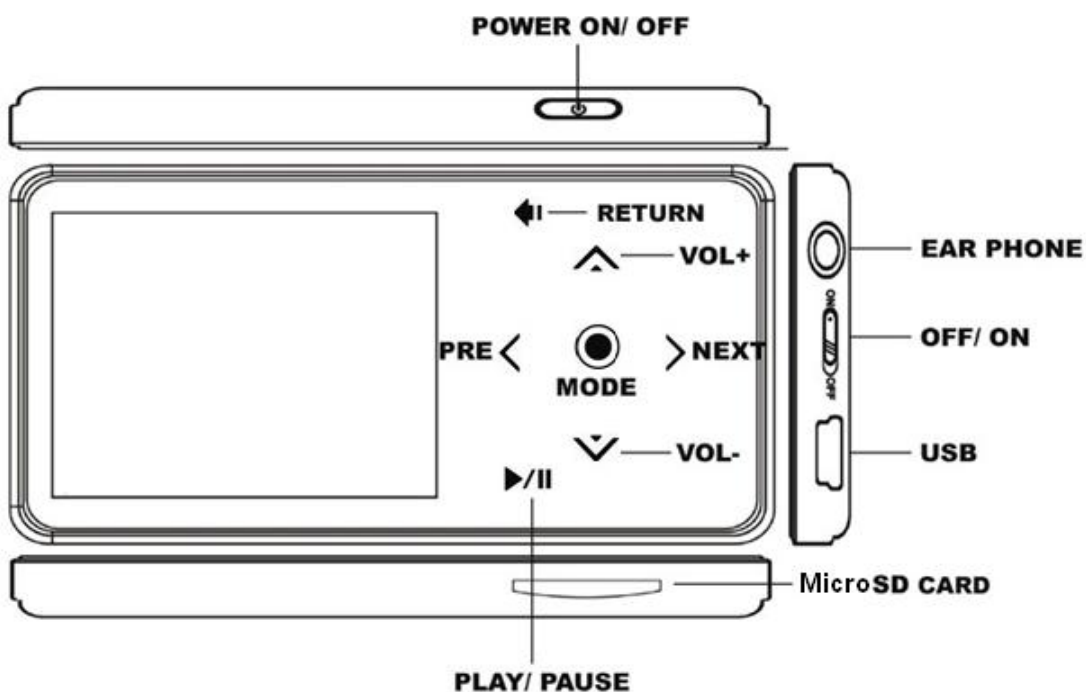
Carefully unpack your package and make sure that you have the following items. In the event that any item is missing or if you find any mismatch or damage, promptly contact your dealer.

- MP-300
- USB cable
- Quick guide
- Earphone
- Software CD-ROM: Including
 - * Video converter software
 - * Electronic manual (English only)

System requirements




- Intel Pentium III 200Hz CPU or above
- Minimum 40 MB hard disk space available
- One free USB 1.1 port or higher
- USB storage compatible with Windows Vista/2K/XP, Mac OS 10.3 or above, Linux 2.4.2
- Video converter software compatible with Windows Vista/2K/XP
- CD-ROM drive

Product Overview




Basic operations

Turning on/off

Push the power switch  of the player to ON position (the power switch is on the right side of the player), press and hold the power key  for 3~5 seconds to power on the player. (To power off, press the  key for 3~5 seconds. If you push the power switch to turn off the player, then the settings will return to their default value).

Enter main menu



After entering the Main Menu, there are eight functions: [Music] [Video] [Radio] [Photo] [Text] [Record] [Explorer] [Setting]. Press < or >, and short press the mode key  to enter the required mode.



Volume Adjustment



To adjust the volume, press  /  to increase / decrease the volume.

Keyboard lock

Lock the key function when putting the player in your pocket or bag to save battery power. Press the  key and  button at the same time, and the keyboard will be locked.

Delete files from the MP-300

Files and FM stations can be deleted in corresponding modes such as Music, Voice, FM or Explorer Mode.

1. Enter the desired mode, at the file list status use < or > to select the desired file.
2. Long press  button and it will pop up a "Delete File?" dialogue. Select "Yes" or "No" and press  key to confirm.

Delete files/folders from PC

You can use the player as a removable USB storage:

1. Connect the PC USB port and the player's USB port with the provided USB cable.
2. Add MP3 files/folders to the USB storage's folder.
 - a. Open files/folders to transfer from your computer.
 - b. Open My Computer → Removable Disk from the desktop.
 - c. Select the files/folders to transfer from your computer and draw and put them to a folder of your choice in the Removable Disk (you also can transfer files on your PC to the player using the "Copy" and "Paste" functions).



3. Delete MP3 files from the removable USB storage (use the "Delete" command).



Notes:

Follow these to avoid damaging the player or data loss:

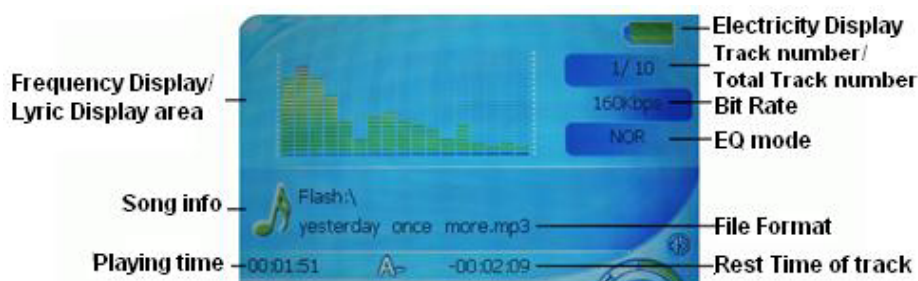
1. Click the left mouse button on the icon on the taskbar at the lower right corner of the desktop.
2. Click the "Safely remove USB Mass storage Device – Drive (G:)" column.
3. Disconnect the player from your computer.
4. Do not disconnect the player from your computer while transferring a file, or it will cause damage to the player or data loss.

Music, Video, FM, Photo Modes

Music mode

In the **[Music]** mode, press < or > to move to the next or previous file, then press ● to start playing and press ►/|| again to pause.

To start A to B section repeat function, press ◀ key and it will show [A] on the screen and press ▶ key again to show [B] as the end. The player will repeat the recorded A to B section. To stop it, press ◀ key again.



ID3 Tag Display

MP-300 is able to display the name of the current track, artist, album, etc. during playback.

It displays ID3 tag information in English, Traditional and Simplified Chinese languages. However, you may have to configure manually regarding the language setting inside MENU (refer to Menu Settings for more details).

In case the ID3 tag information is too much and exceeds the display area of the screen, the rest of the information will be displayed in dynamic scrolling, from right to left across the screen.

Lyric Display Synchronization

This player supports "*.LRC" lyric files, and lyrics may be synchronous displayed on the upper screen while playing music.

How to use lyric files?

Save the lyric file with the same name as that of the corresponding music file.

For example: Music file name: GiGi-Sky.mp3 Lyric file name: GiGi-Sky.lrc

Music setting

Refer to page 10 for [Setting] function for more details.

Video mode

In [Video] mode, select the desired movie file and press ►/|| key to play. Long press < or > to fast rewind or forward the video file. Press and hold ● key to exit the submenu and return to Main Menu.



- Note:**
1. The video file format that can be played in the player is Xvid format, and the formats that can be converted directly into Xvid are MPEG, ASF, AVI, WMV and so on by the converter tool in the CD.
 2. Refer to page 12 for video converter software installation instructions.
 3. Make sure that the video file converted can be played in your computer, if not, it cannot be played in the MP4 player.

FM radio mode

In [FM] mode, the earphone is used as an antenna, so always keep the earphone or speaker connected well. Press < or > to manually search for radio stations.

Radio direct record: When you listen to the FM radio, press ◀ key once to prepare recording and press the ▶ key again to start recording, press ▶ key again to pause. Press the ● key to save the recorded file.

Submenu options introduction:

Short press the ● key to show the menu function on the left side of the screen: Manual, Preset, Mem, Del, Auto, and press < or > to choose a different function and press ►/|| to confirm.

● Manual search

Press < or > button and the player move forward or backward in single steps of 100KHZ to manually search for stations.

● Auto Search

In FM mode press MODE button to start search stations automatically, then the player can auto scan the frequency between 87.5MHZ and 108MHZ (or and save to scanned station)

● Save the stations

Enter FM submenu and choose “Mem” option, and then press the **●** button to show all the scanned stations. Use **▲** / **▼** to select the desired channel and press **●** to show the “Save Channel?” dialogue. Choose “Yes” or “No” and press **●** to confirm.

● Listen to the saved stations

Enter Preset options and press **●** to confirm. Press **<** or **>** button to listen to the saved stations in sequence. It can save up to 20 stations.



Note: The player supports US Band (FM87 - 108MHz) and Japan Band (FM76-90MHz), suitable for different areas. Access the Setting mode to choose suitable area. Refer to page 10 for the Setting function.

Photo mode

In [Photo] mode, select the desired photo file and press the **●** key to play. Press **<** or **>** to view next or previous photo manually. To enable photo slide show, go to [Setting] function or short press **▶/||** to change to slide show mode. Press **▶/||** again to change to manual mode.

Text, Record, Explorer, Setting modes

Text mode

In the [Text] mode, press **<** or **>** to choose a text file and press **●** to start playing. You may press **<** or **>** to move to the next or previous page.

Voice record mode

In the [Record] mode, press **⏻** key again to start voice record, press **⏻** again to pause. Press **●** key to save the recorded file.



Explorer mode

Short-press **⏏** to enter this option, list all stored files in the resource manager. You can view all of your files in this mode and choose the desired file, press **⏏** to play the file. You can also press the **⏏** key to delete the file. Select “Yes” to delete and “No” to cancel and press **⏏** to confirm.

Setting mode

In [Settings] mode, you can do advanced settings for different functions. Press the **⏏** key to enter different function setting. Follow the detailed instructions below.



◆ Music Play

1. Repeat Mode

Once	Stop after playing all the songs in each directory.
Repeat 1	Repeat playing a single song.
Folder once	Stop after playing all the songs in the folder.
Folder repeat	Repeatedly play all the songs in the folder.
All once	Play randomly the songs in the current folder.
All repeat	Repeatedly play all the songs.
Intro	Play all the songs for the first 10 seconds in the current folder.

2. **Play Mode:** order/ shuffle

3. **EQ Select**

Natural/3D/Rock/Pop/Classic/Bass/Jazz/User EQ, these eight options will bring you different music effects; also, you can edit your favorite EQ effect with the [User EQ set] option.

4. **User EQ Set**

- Press < or > to choose a frequency band (60Hz/300Hz/1KHz/3KHz/6KHz).
- Press ^ / v to adjust the value for that frequency band. After you finishing the setting, repeat steps a, b in order to set up different frequency bands. After all the bands have been set, select "Yes", then press ● to confirm and return back to the upper level menu.



◆ **Radio**

1. **Stereo SW**

ON	Set FM Radio in stereo sound.
OFF	Set FM Radio in mono sound.

2. **FM Region**

- China/Europe/U.S.A.: the total frequency range is from 87.0-108.0MHz. Select correct area.
- Japan band: Select it when you are in Japan. It ranges from 76.0-90.0MHz

◆ **Record**

- REC Quality: high quality, common quality (the first one has larger REC file and better effect; the second one is opposite).
- REC Volume: five options of +1, +2, +3, +4 and +5. The higher the level, the larger recorded volume.

◆ **Display**

- Backlight time: six options: 5 sec., 10 sec., 15 sec., 20 sec., 30 sec., and always on.
- Lum: five options of +1, +2, +3, +4 and +5, the higher the level, the brighter the screen.
- Backlight mode: two options of Normal and Electricity-saving modes.

◆ **Auto play setting**

There are 2 options – Text or Jpeg to choose: 1, 2, 3, 4 and 5 seconds for the time segment under the Auto-play mode of Text or Jpeg.

◆ **System**

Three sub-options: **Language, about** and **Upgrade**.

1. **Language:** Choose the language you want and press ● to confirm.
2. **About:** player storage memory, remain memory and system software version no., this information is read-only, short press [MODE] key to exit.
3. **Upgrade**

In this menu, eject out the dialog box, confirm whether to upgrade Firmware, select “Yes” or “No”.

◆ **Power Off Time**

Select and enter “Power Off Time”. With this “Off time” control, you may set the standby time for the player to power off automatically when it remains idle for a period of time. This aims to save battery power especially when the player is switched on but remains unattended. “Off” disables this function. In this menu, there are six options: Power Off, 10 min., 15 min., 30 min., 60 min. and 120 min.

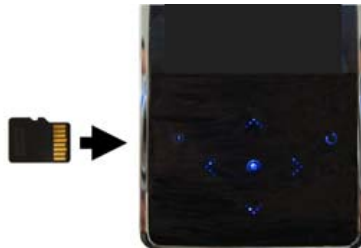
◆ **Defaulted Set**

In this menu, eject out the dialog box, confirm whether to resume the default value, select “Yes” or “No”.

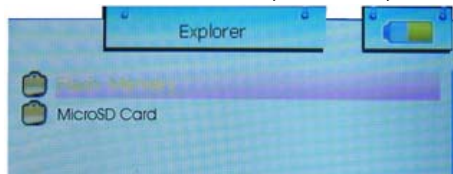
MicroSD/ T-flash card

MicroSD/T-flash card:

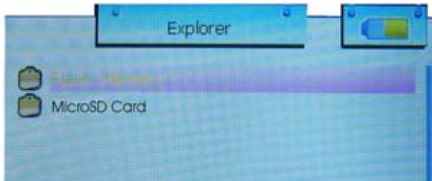
1. Insert the MicroSD/T-flash card into the slot of device, then "Power ON".



2. Short press "●" to go into MENU - Movie, Music, Photo or Explore



3. Short press "VOL+/VOL-" to select go into built-in flash memory or MicroSD card memory.
4. Short press "●" to go into MicroSD card memory to play the files inside.
5. In music function, if you've already inserted MicroSD card, it will play the music stored in MicroSD card. To go back to internal flash memory, short press ● key to go back to song list and press ◀ to enter memory selection mode.



Software installation


1. Insert the software installation CD into the CD-ROM. If the auto-run program does not run automatically, go to steps 2 to 3. Otherwise, skip to step 4.
2. Click [Start] / [run] menu.
3. In the run dialog block, type D:/Show Menu.exe (where D:/is your CD-ROM), click [OK].
4. Click "Video Converter Software" button when the welcome window appears. A video converter software installation will activate, follow the directions to finish the installation.

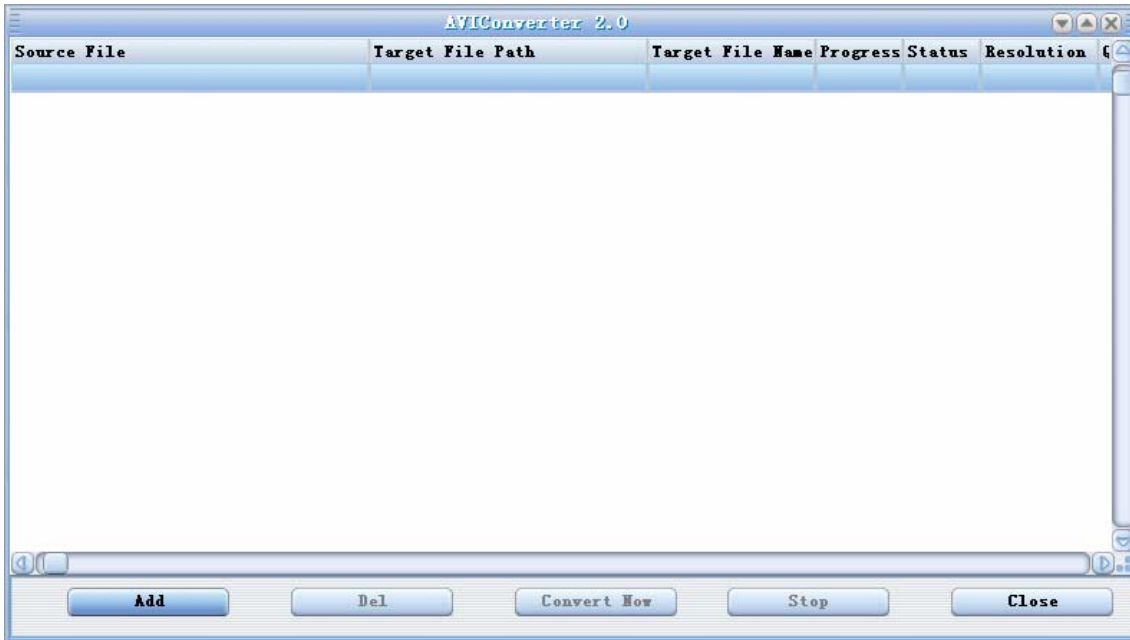
Convert and Play Video files

This player can convert the following video format into AVI (Xivd) video format via the attached video convert software.

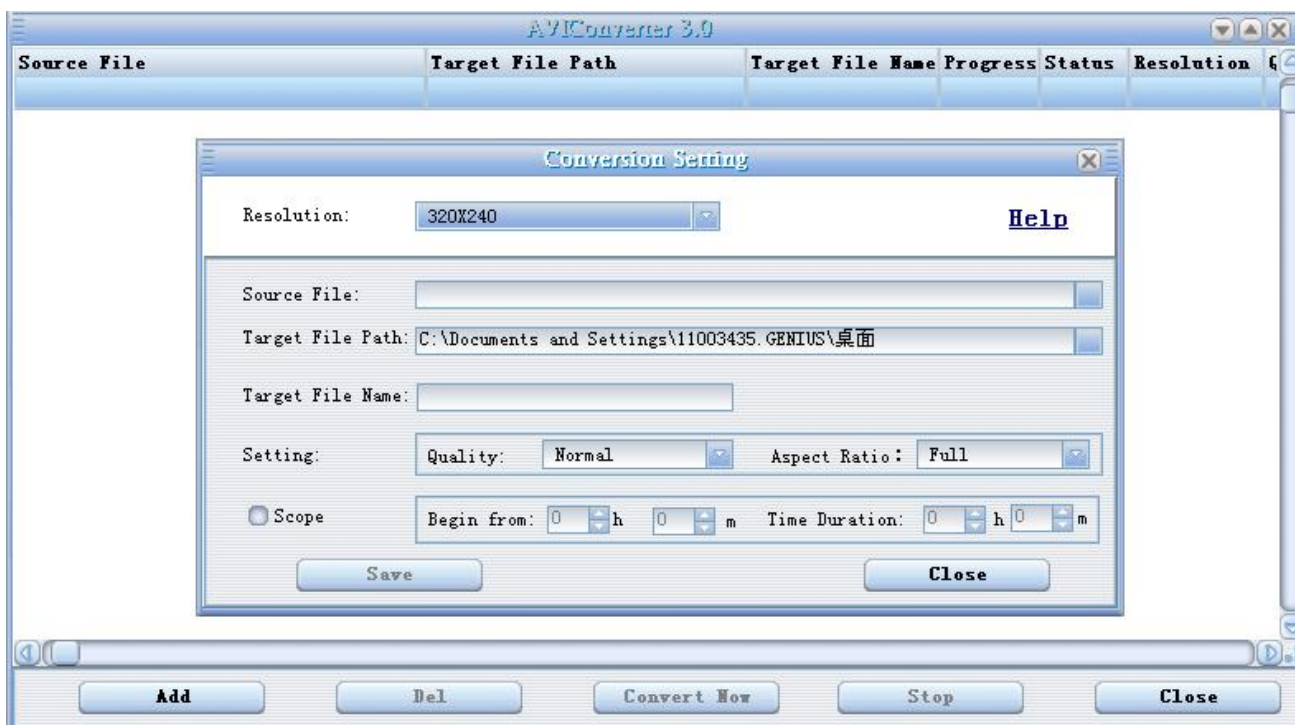
- The AVI format file with the extension name AVI
- The Windows Media format file with the extension
- The MPEG1 format file with the extension name mpg, mpeg;
- The Real play format file with the extension name rm;
- The QuickTime format file with the extension name mo
- The MPEG2 format file with the extension name vob.



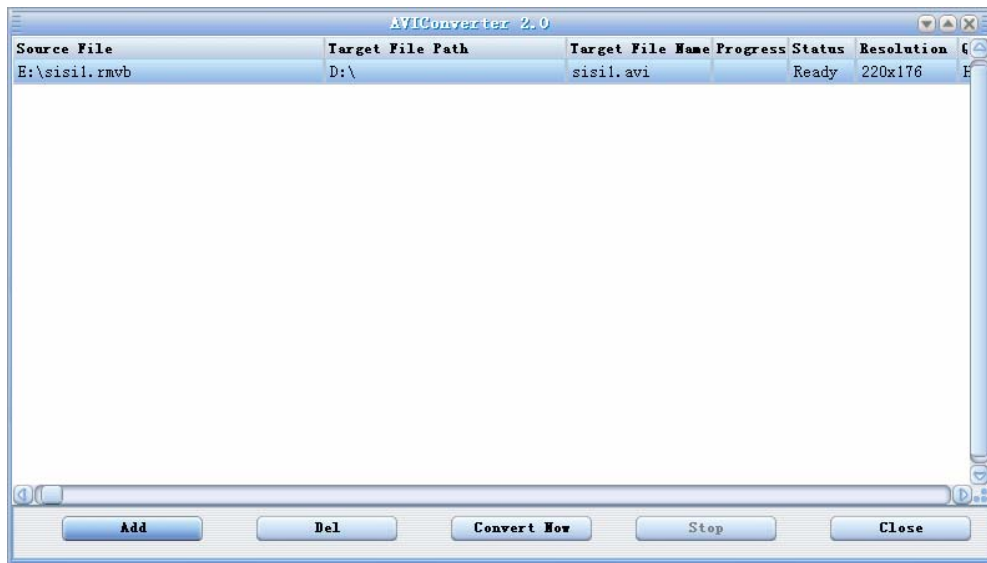
1. Click  icon on the desktop or run [Start]->[Program]->[AVI Converter Package]->[AVI Converter], shown as follows:



2. Click “Add” to pop up the following window:



3. Select your desired video/audio file and AVI video file routine to be generated, click “Save” button, then click “Close” button return to the following window:



4. Click “Convert Now” button, then begin to convert to AVI file. Once you successfully converted the AVI video file, click “ok”. For more details, see “Help”.